

http://www.boroughofpoole.com/servicetitles.asp?id=E835BD88A88F4D&titl

Go

NOV

DEC

SEP

◀ 05 ▶

2005

2006

2011



11 captures

5 Dec 2006 - 3 Mar 2016

▼ About this capture



boroughofpoole.com

[Text only](#)

● a - z of services

● your council

● jobs

● tourist info

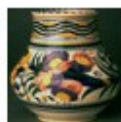
● contact us

● search

● help

● home

a-z of services ► **poole logboat**



[Back to list of contents](#)

On February 12th 2006, the BBC TV program [Countryfile](#) included an item about the Poole logboat filmed in the logboat drying chamber with presenter John Craven.

Discovered in Poole harbour 1964, the Poole logboat is one of the largest surviving logboats of the prehistoric period in the UK and dates to about 300 B.C. It is believed to be related to two nationally important iron age jetties and continental trade taking place on Green Island in Poole Harbour.



The large Iron-Age logboat is being conserved with sucrose as part of a lottery project to redisplay Poole's Waterfront Museum and has now completed six months of drying. Sucrose treatment of wood has been used in America and Germany, but this is the first time any large wood artefact has been preserved by this method in the UK. After many years submersion in a sucrose solution, the logboat is being dried in a specially constructed and heavily insulated chamber with a bank of seven drying fans, along with humidity monitoring equipment.

As the project continues, research will be published in international journals comparing the sucrose system with the more conventional polyethylene glycol (PEG) method. It is hoped the sugar method may provide a new lower cost, low-tech conservation method for some logboats. The project is being carried out by Poole Museums with research direction by expert Jim Spriggs, Head of conservation at the [York Archaeological Trust](#), and Jeremy Hutchins, an Associate Professor at Oslo University in Norway.



The conservation process should be completed during summer 2006 and the logboat will be ready to move to into position as part of the new displays in the Museum in time for the re-opening in early 2007. This will close a chapter in the museums history and finally allow the

NOV **DEC** SEP
◀ **05** ▶
2005 **2006** 2011

[11 captures](#)
5 Dec 2006 - 3 Mar 2016

▼ About this capture

👤 ? ✕
f 🐦

Over the years the project has been supported by many sponsors including British Sugar, with recent lifting help from Poole Rowing Club and Poole Rugby club.

Service Unit: [Culture & Community Learning](#)

a: Culture & Community Learning Poole Central Library Dolphin Centre Poole

t: 01202 262440

© Borough of Poole - All other trademarks are acknowledged as belonging to their respective owners.
All rights reserved.

boroughofpoole.com | [Disclaimer and Terms of Use](#) | [Privacy Policy](#) | [Text Only](#) | [Directgov](#)

top 