

EL PUERTO DE *ONOBA* AESTUARIA

Dr. Juan M. Campos Carrasco
Dr. Javier Bermejo Meléndez



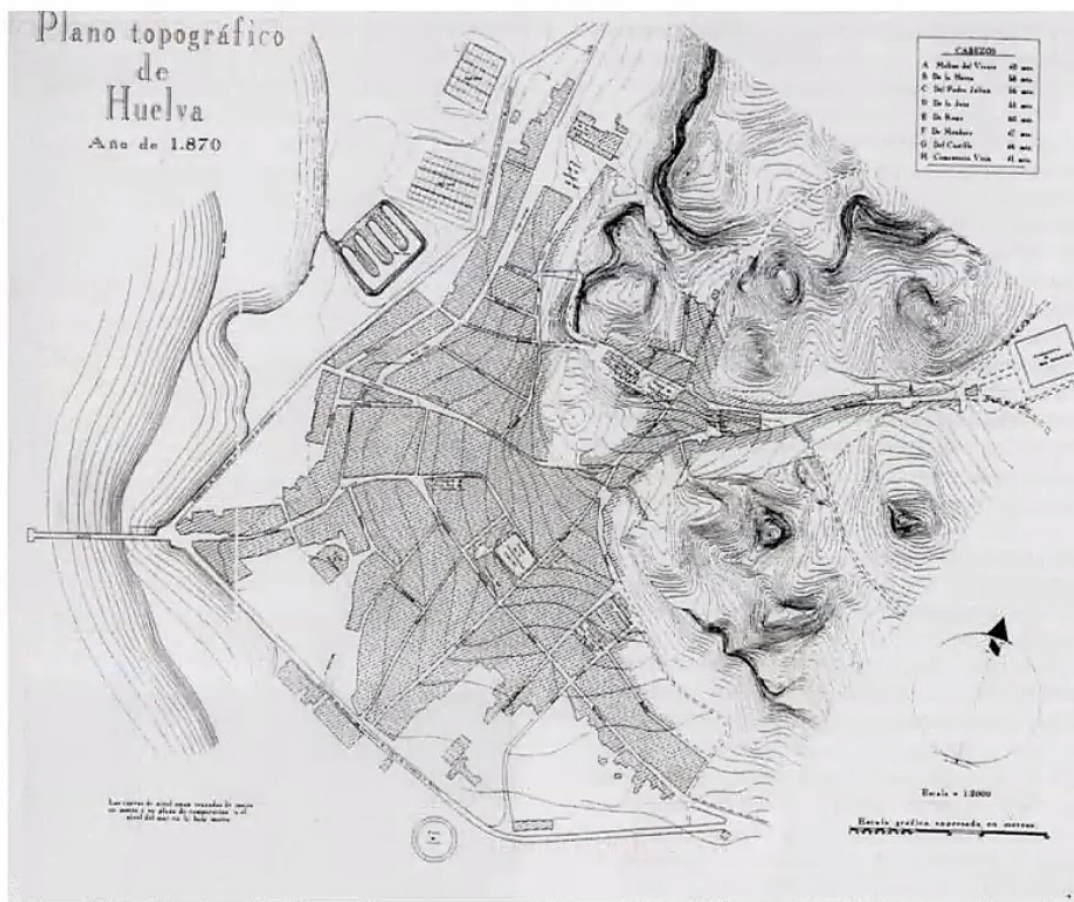
Una topografía particular



Años 60 del s. XX



Juan Campos Carrasco

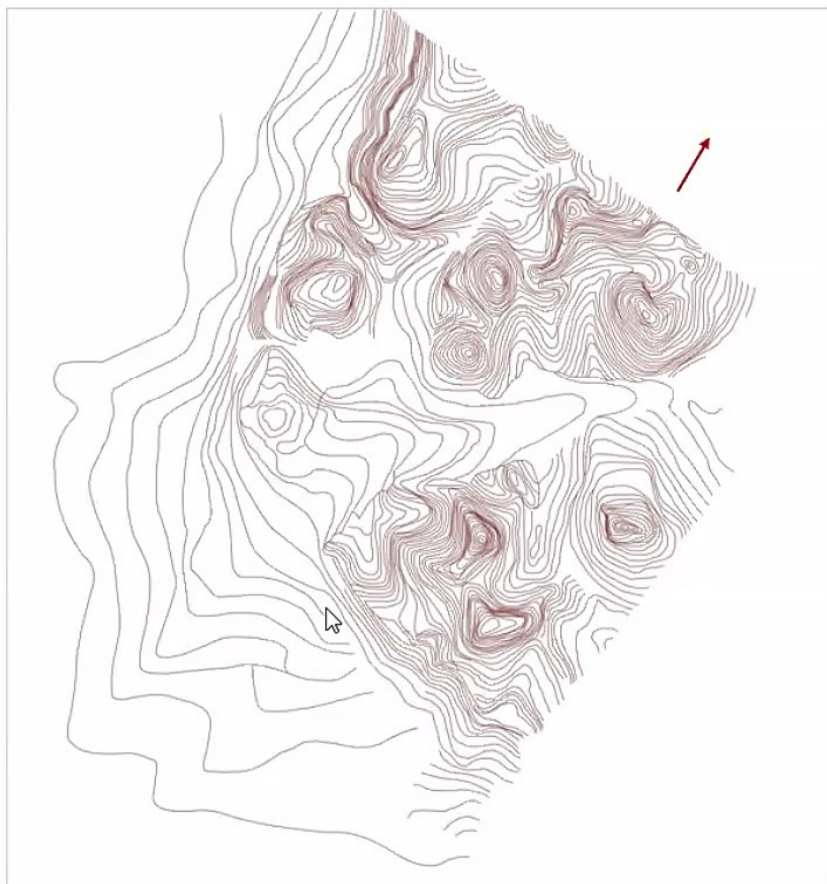




ÓLEO SOBRE TABLA DE 1830

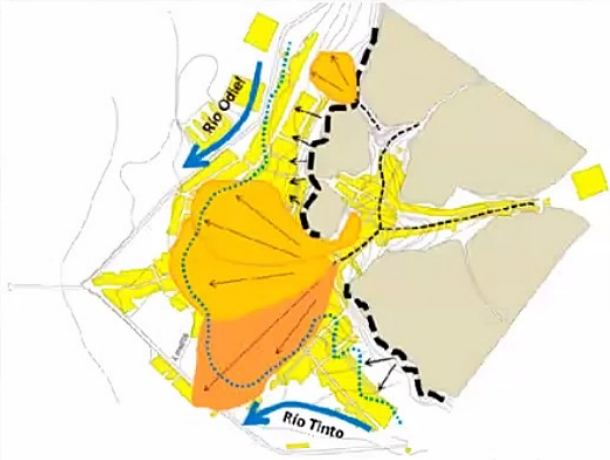


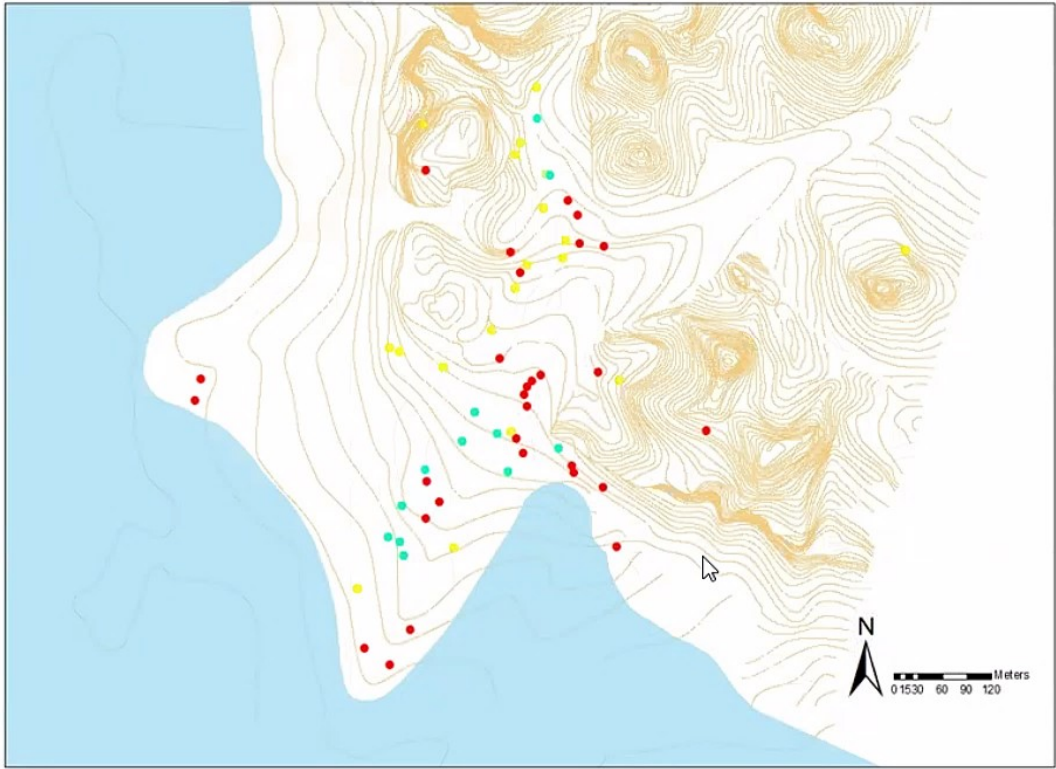
Juan Campos Carrasco



Juan Campos Carrasco







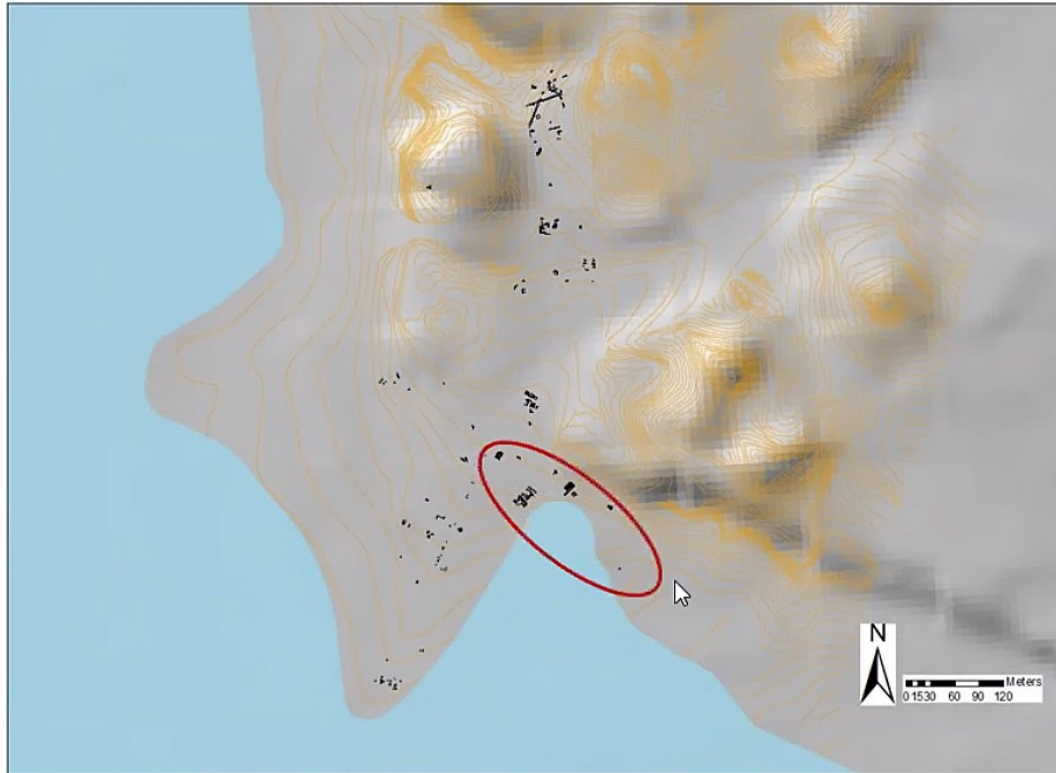




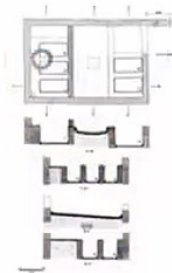
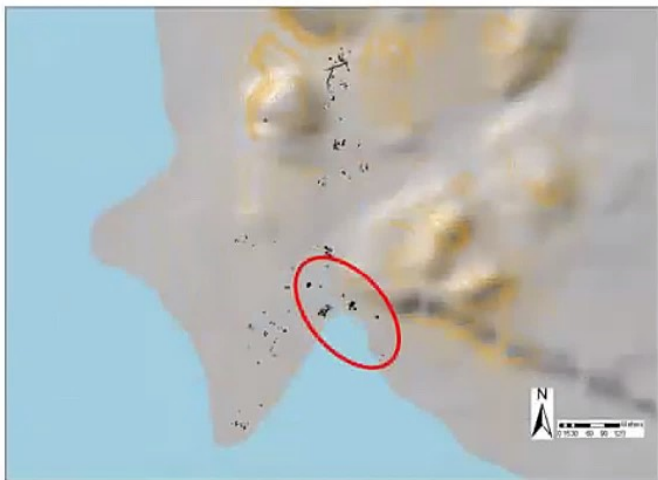
Juan Campos Carrasco



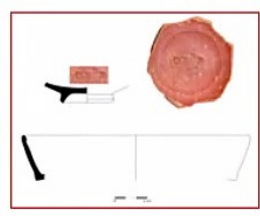
Portus onobensis: las infraestructuras portuarias

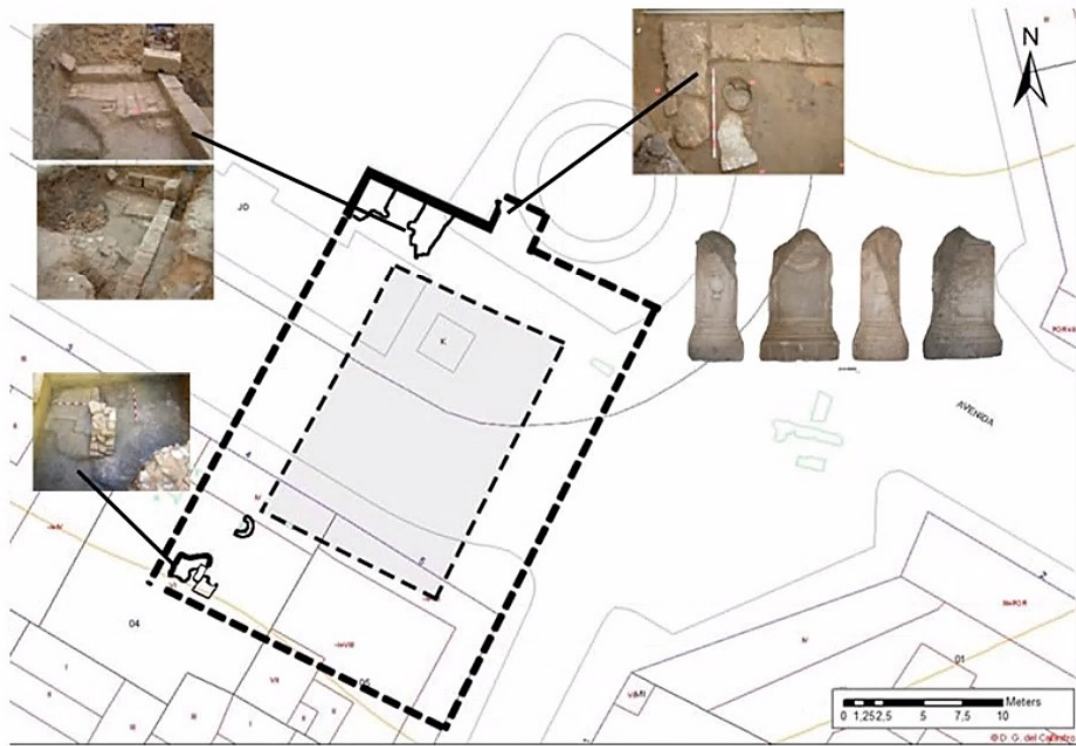


El área pesquero- conservera

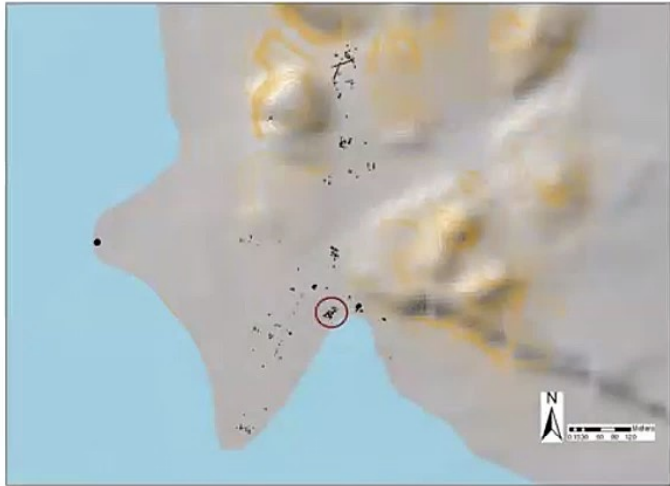


Juan Campos Carrasco

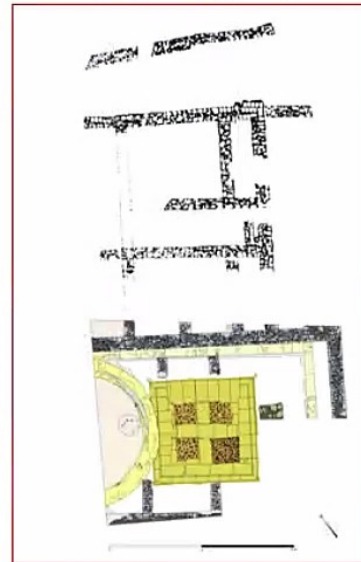




Juan Campos Carrasco



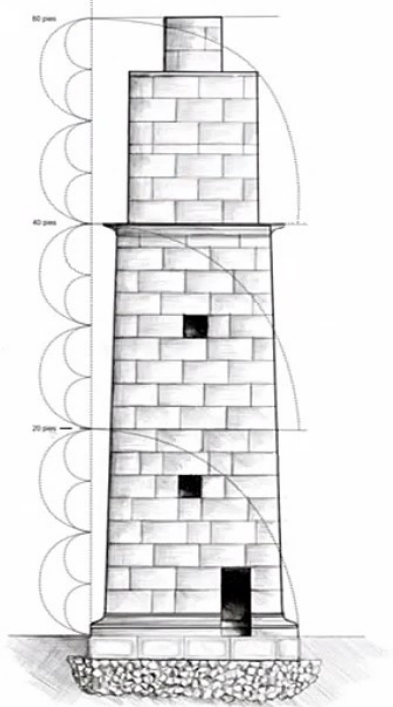
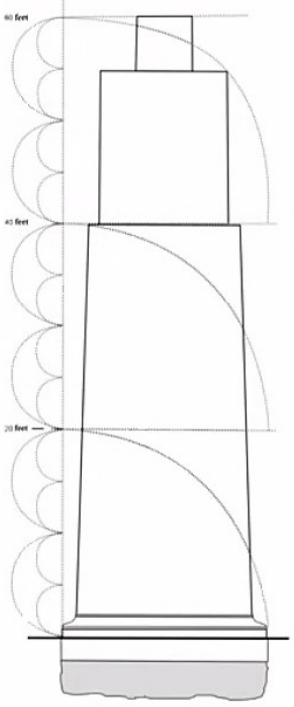
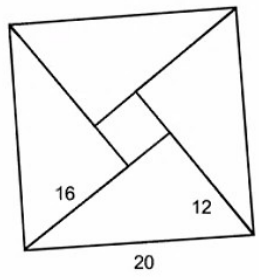
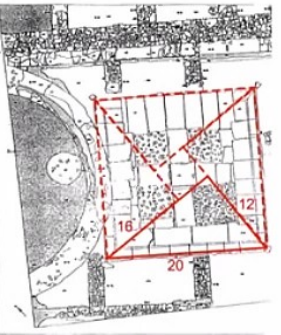
Servicio de Arqueología DPH



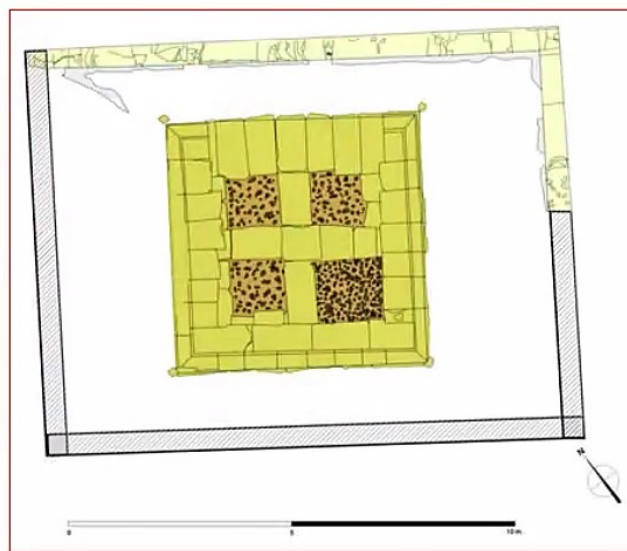
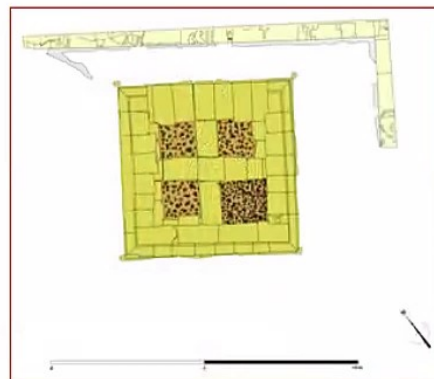
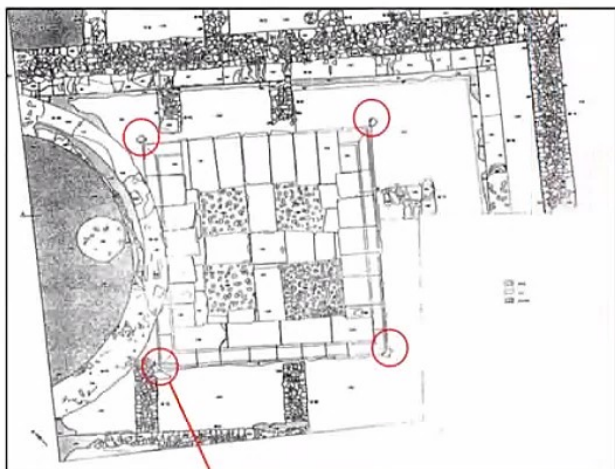
Delgado 2016, a partir de Fernández, Rufete y García, 1992; 1995



Juan Campos Carrasco



Juan Campos Carrasco



4



Juan Campos Carrasco

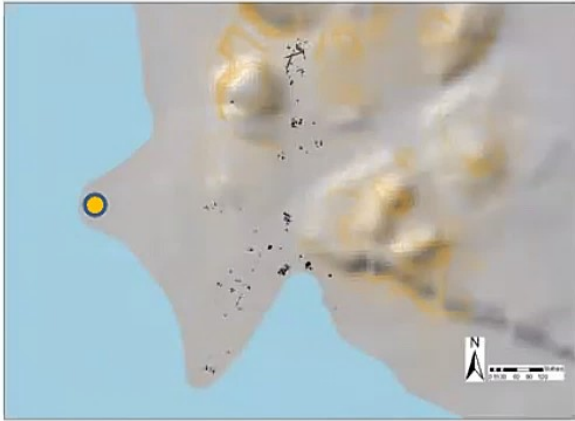


Page III

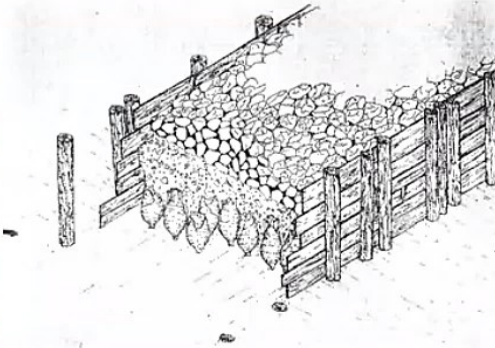


Juan Campos Carrasco

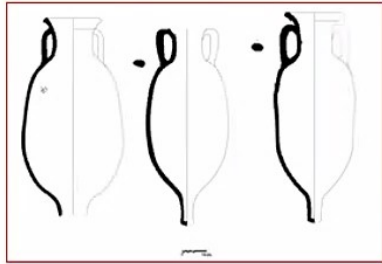
¿Embarcaderos?



Haro, Castilla y López, 2002; 2005



Fozzati y Toniolo, 1998



Delgado, 2016



Juan Campos Carrasco

portus onobensis et stationes

