

Figure 1.3 The maritime approaches to Adulis

# THE RUINS OF ADULIS

Sketch by R. Sundström  
1906.

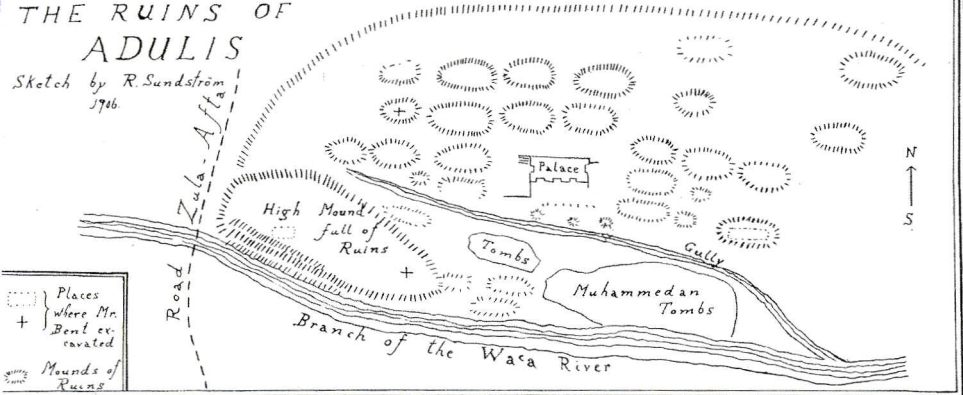
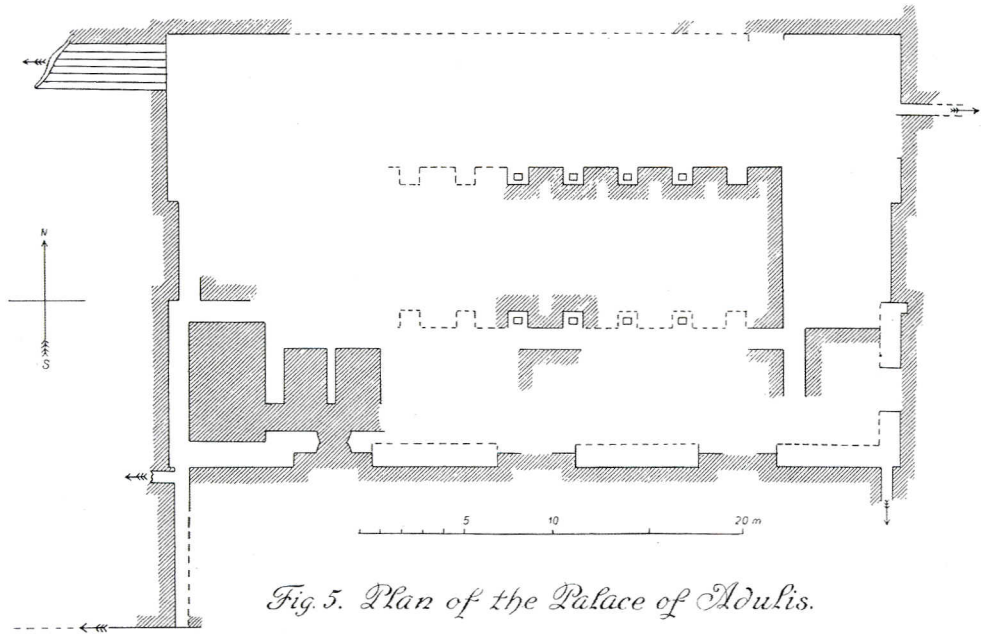


Figure 2.6 Plan of Adulis by Sundström (1907)



*Fig. 5. Plan of the Palace of Adulis.*

Made by R. Sundström.

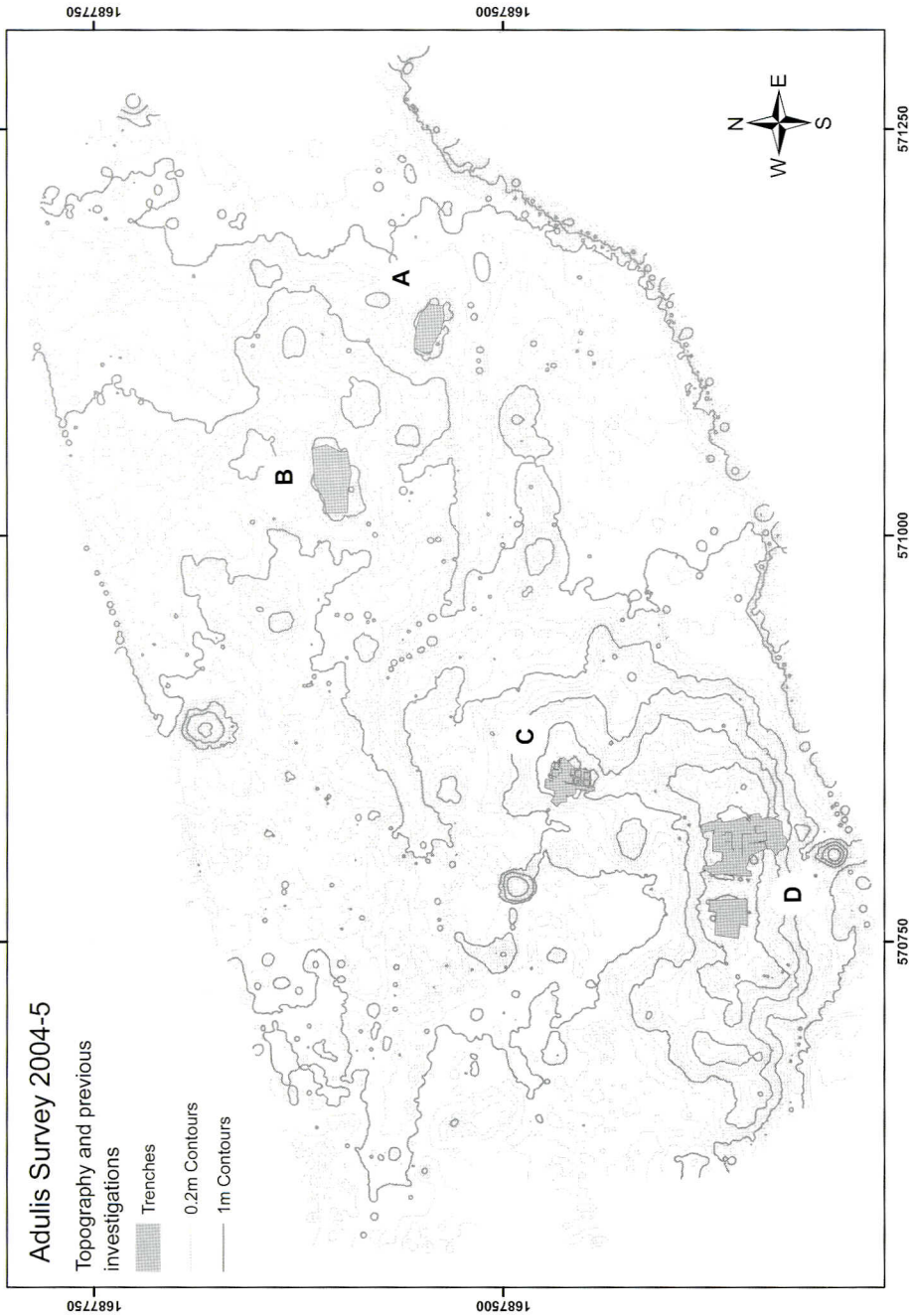


Figure 3.2 The topography of the site of Adulis showing sites of previous excavations. Letters correspond to discussion in the text.

# Adultis Survey 2004-5

Geophysical survey interpretation and trenches

- Trenches
- Anomalies
- Possible

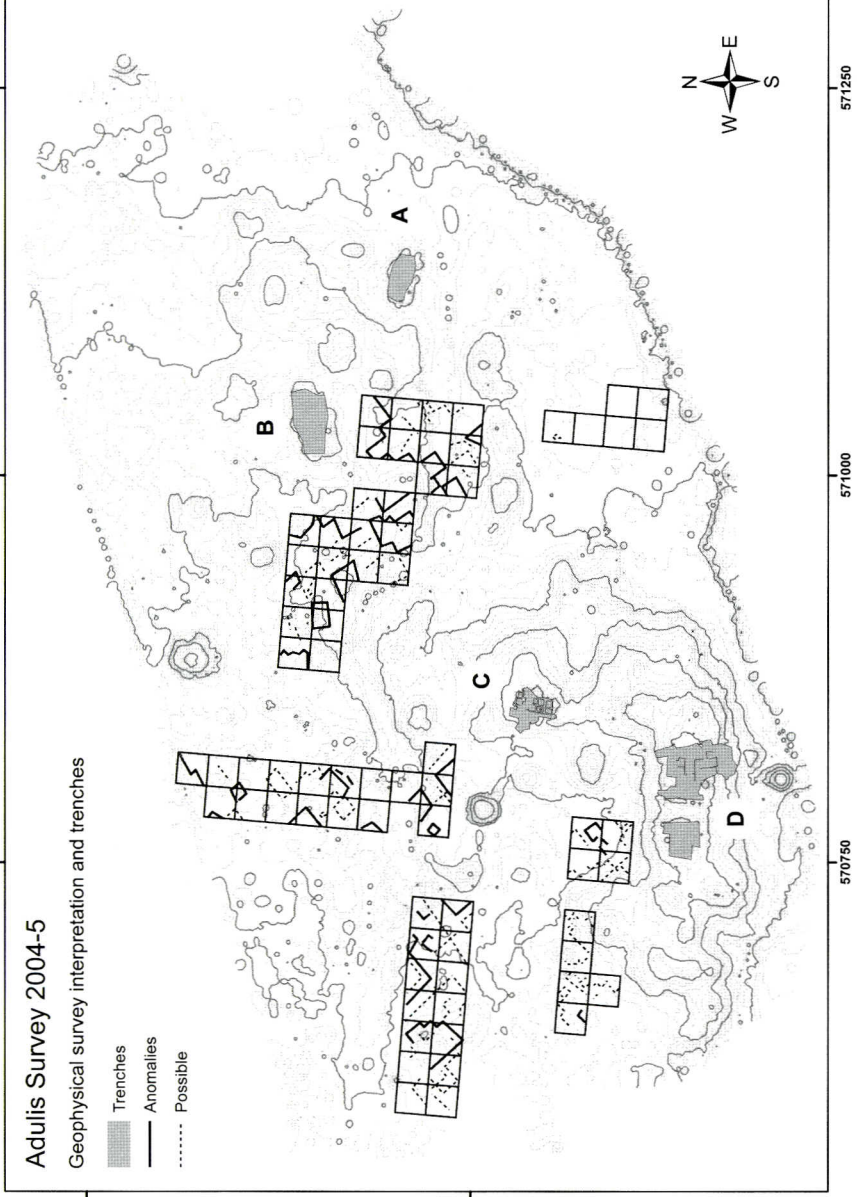
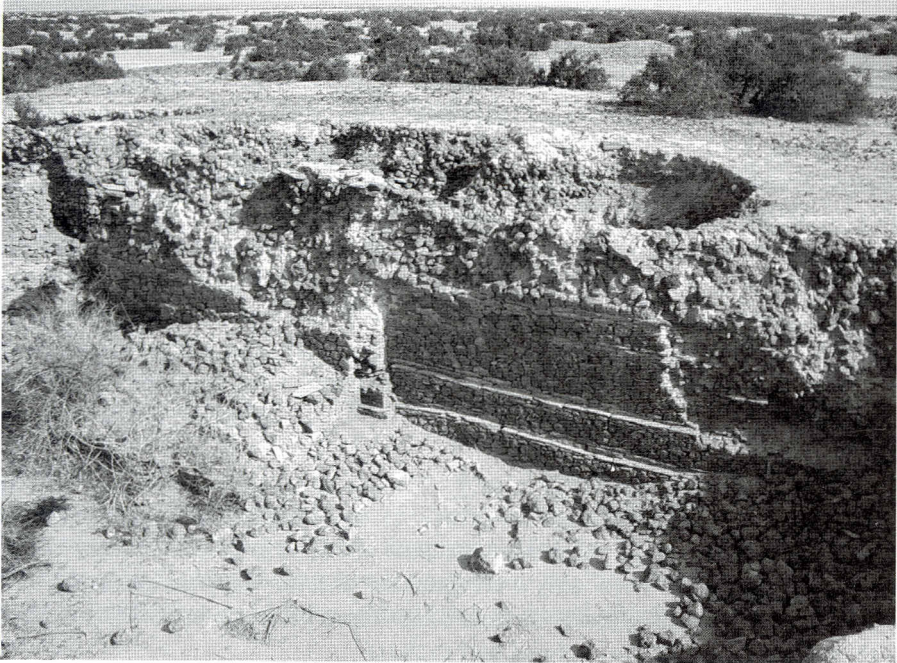


Figure 3.8 Interpretation of the geophysical survey



*Figure 9.1 View of Anfray trench in 2005*



*Figure 9.2 View of the main wall exposed in Anfray's trench*