

# Pyrgi and Castrum Novum

fish-tank and some new data for the studies on the sea level change.

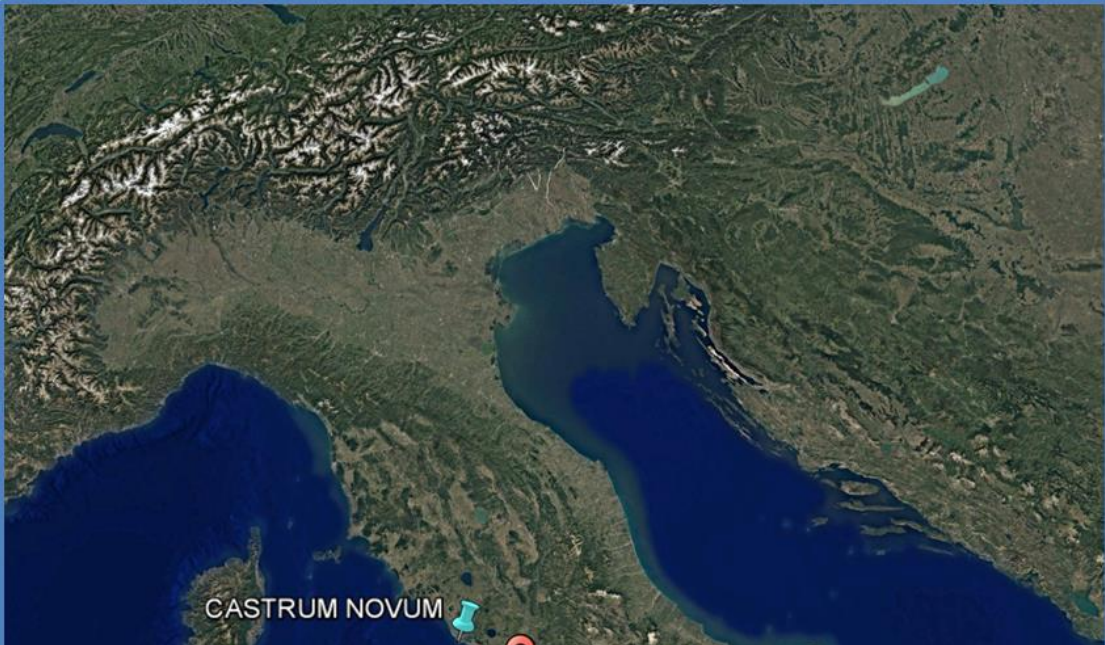
**Dott. Stefano Giorgi**  
Responsabile Centro Studi Marittimi

**Dott. Flavio Enei**  
Direttore del Museo del Mare e della Navigazione Antica

**Centro Studi Marittimi**  
**Gruppo Archeologico del Territorio Cerite**

**Museo Civico Santa Marinella**  
**Museo del Mare e della Navigazione Antica**





CASTRUM NOVUM

Italia



CASTRUM NOVUM

Siria Minnella

GROTTACCE

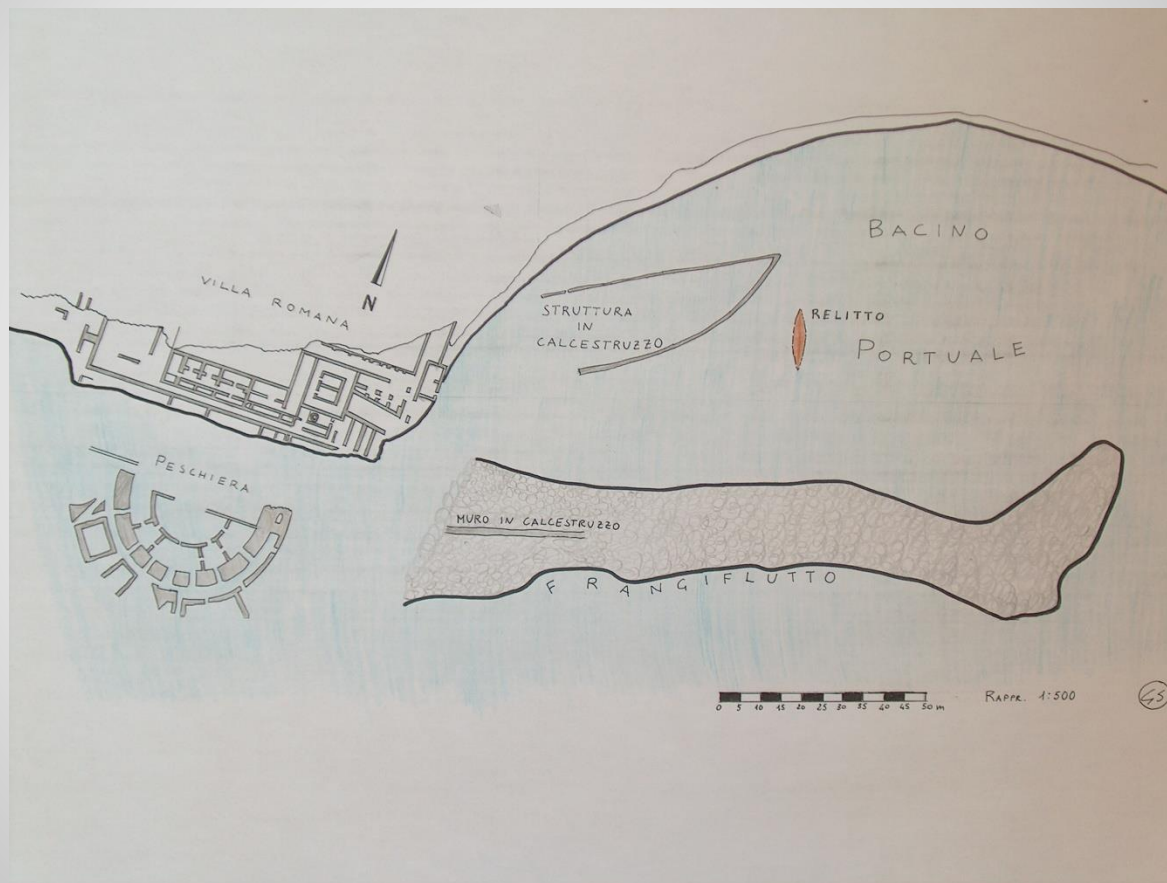


## *Fish tank of Le Grottacce*



satellite photo with villa, fish tank and harbour

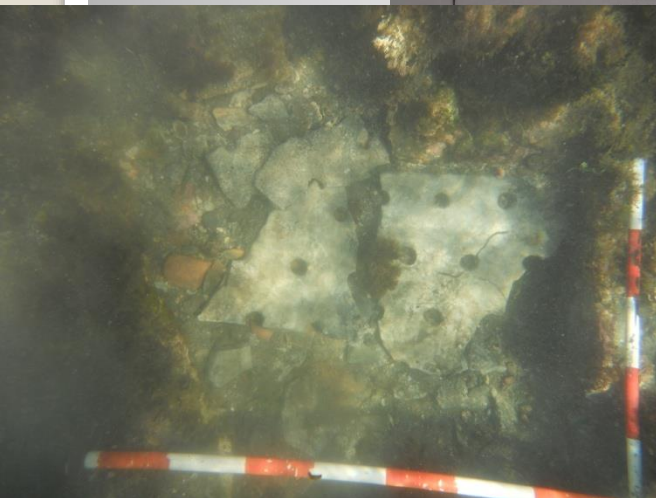
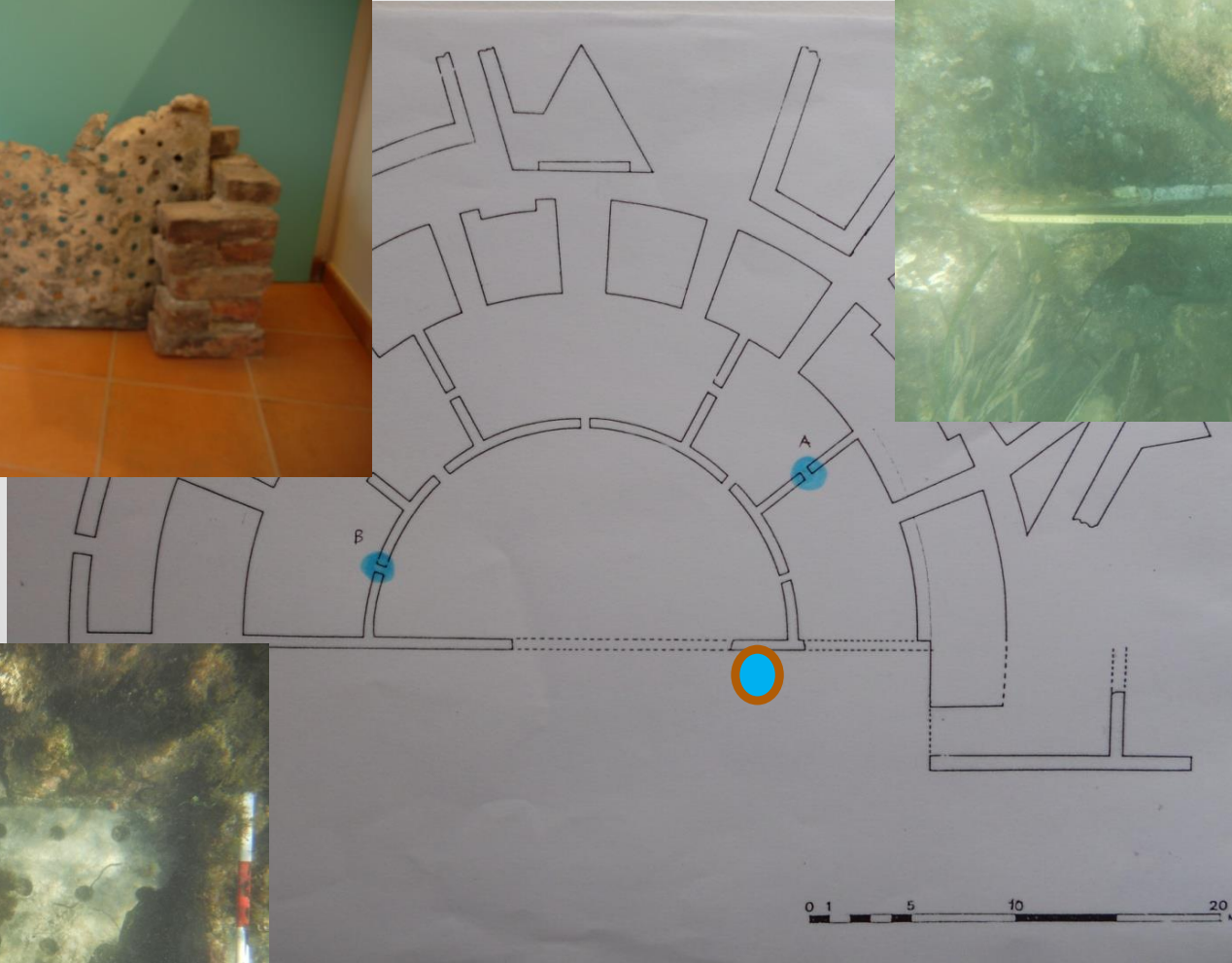
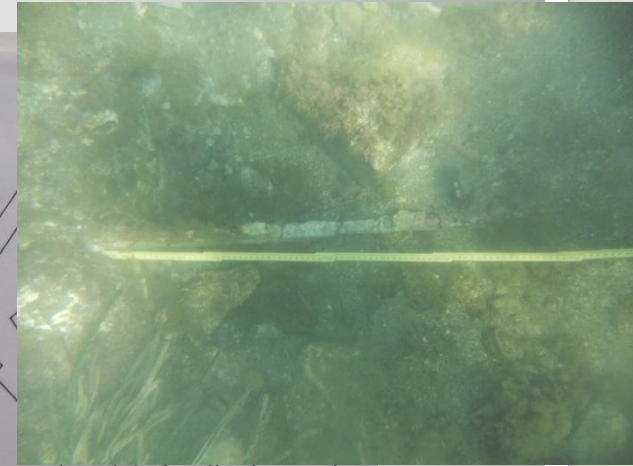
## *Villa, fish tank and harbour of Le Grottacce*



Map by S. Giorgi in Forma Urbis, 2009



## *Fish tank of Le Grottacce*



**Points of discovery sluice gate: A in lead, B in marble and lead tub ph by S. Giorgi,**

*Fish tank of Le Grottacce*



Part of sluice gate in marble, ph. by S. Giorgi

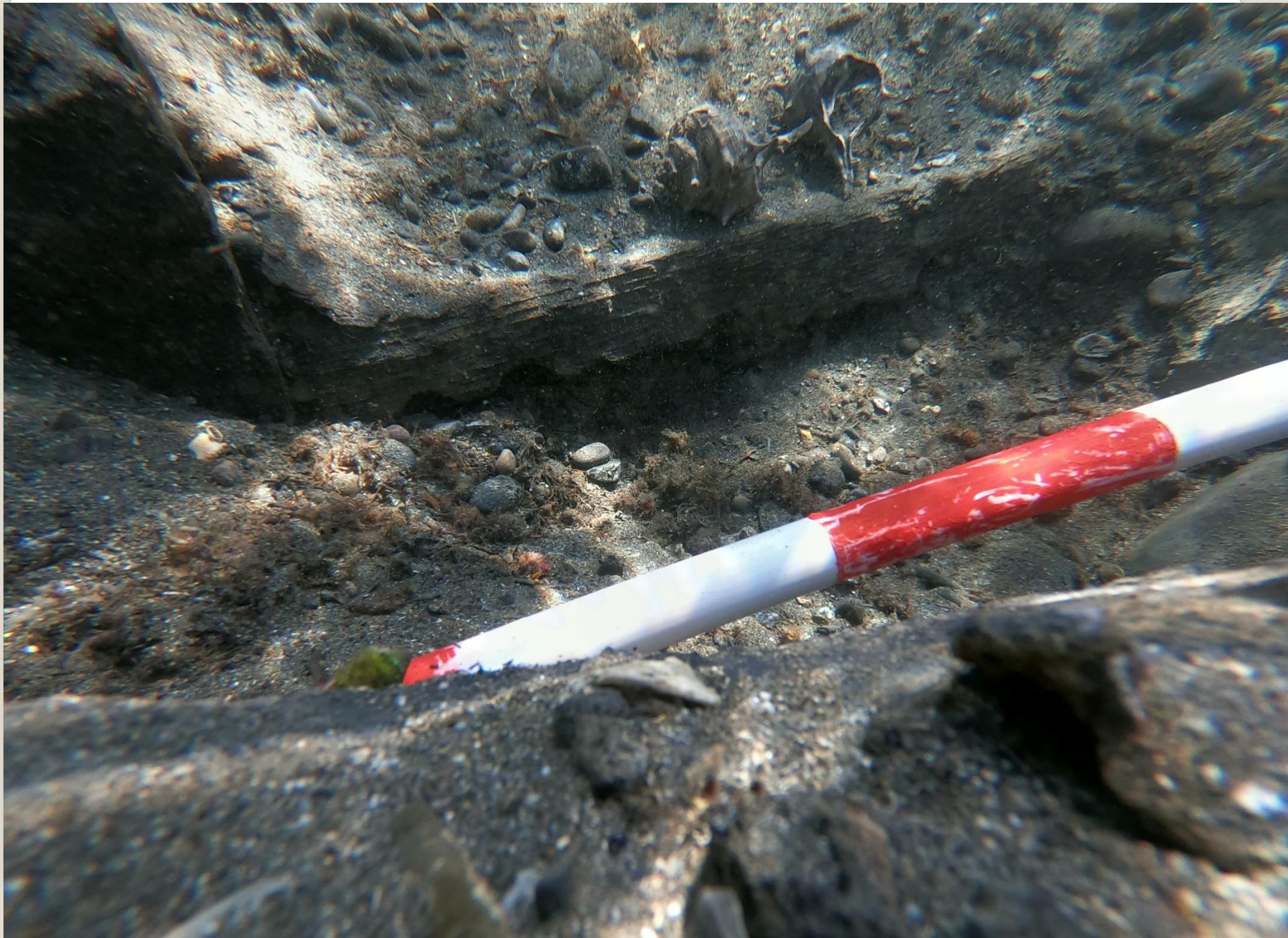




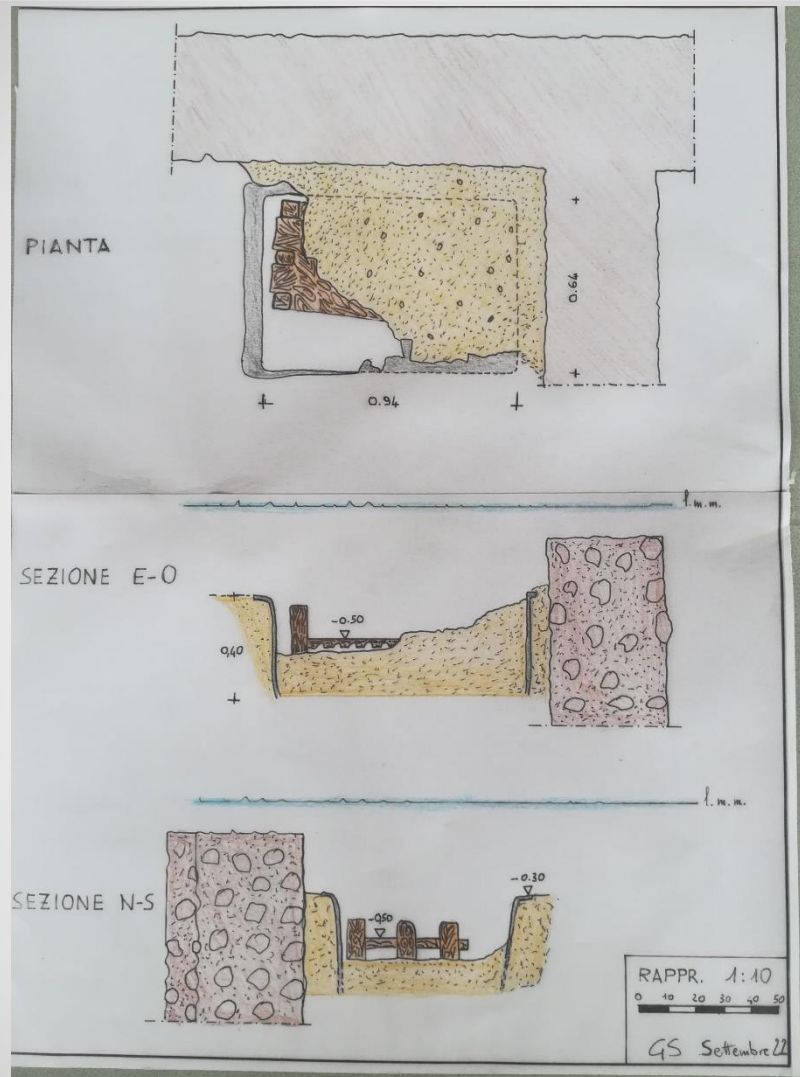












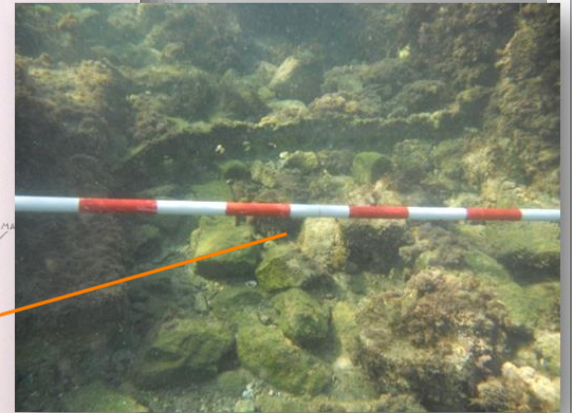
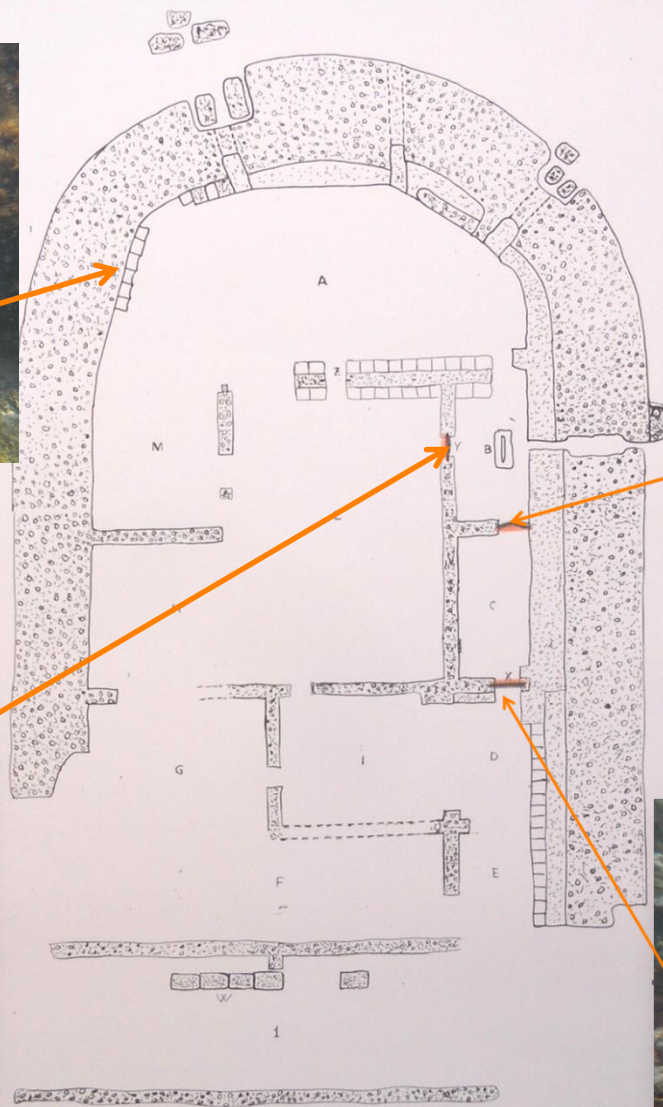
***Lead tub and the wooden structure inside***



# *Fish tanks of Castrum Novum*

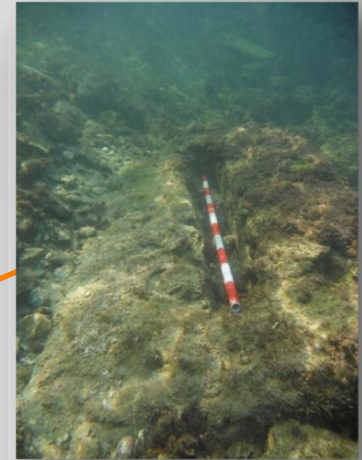
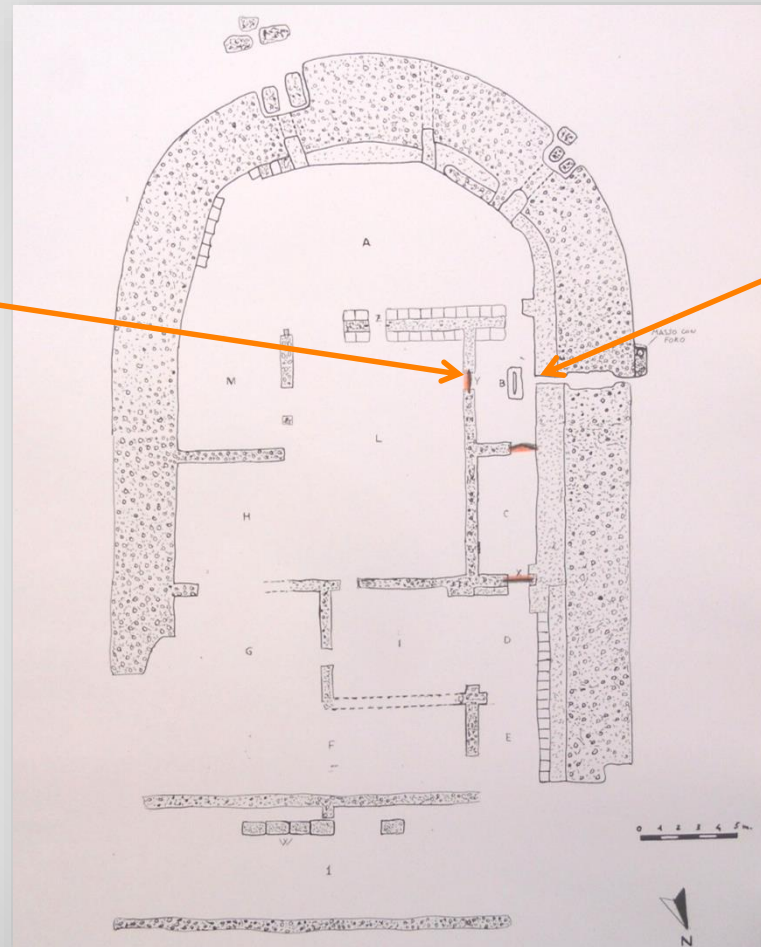
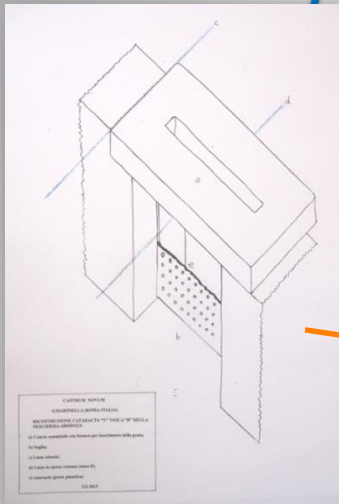




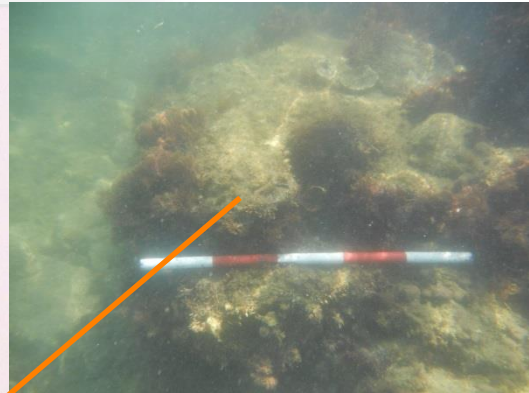
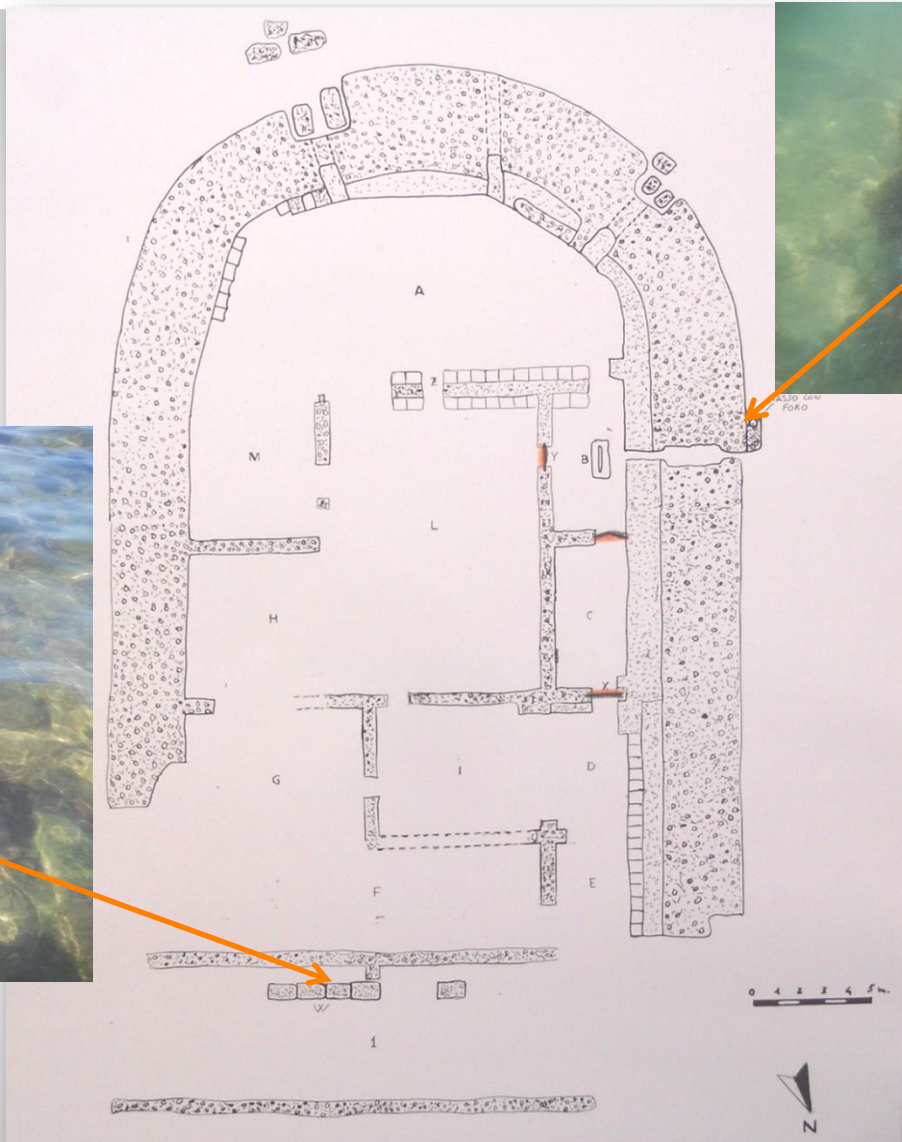




# Fish tanks of Castrum Novum



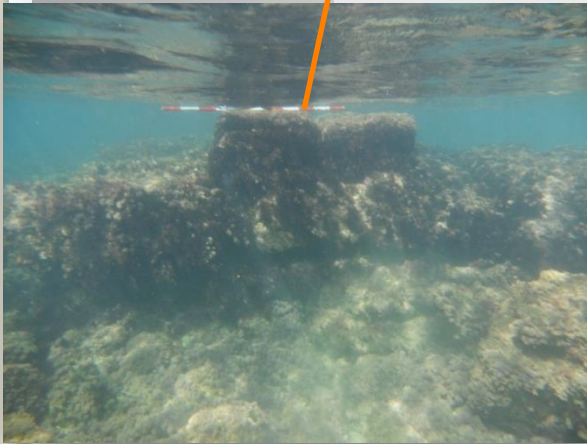
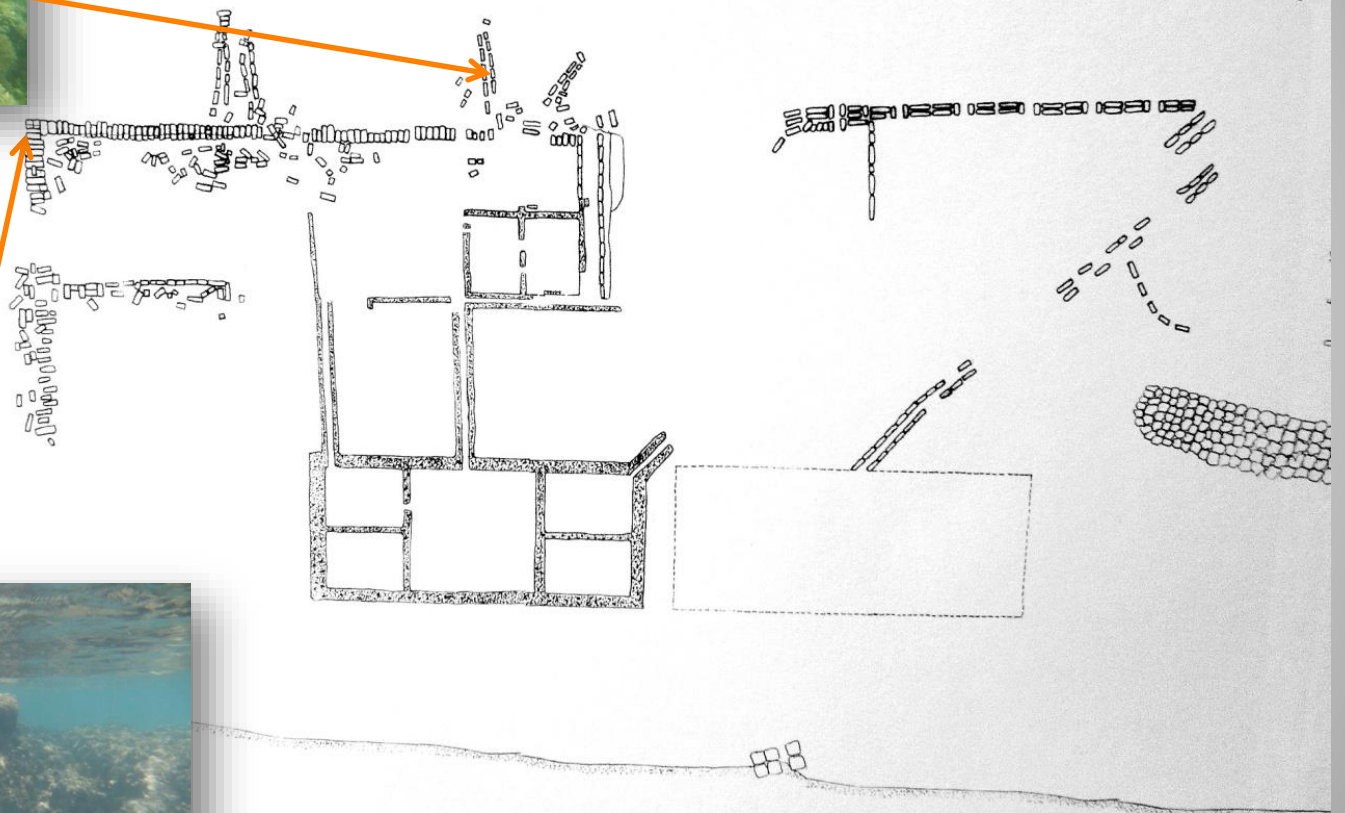
Map of the apsed fish tank of Castrum Novum by S. Giorgi, 2016



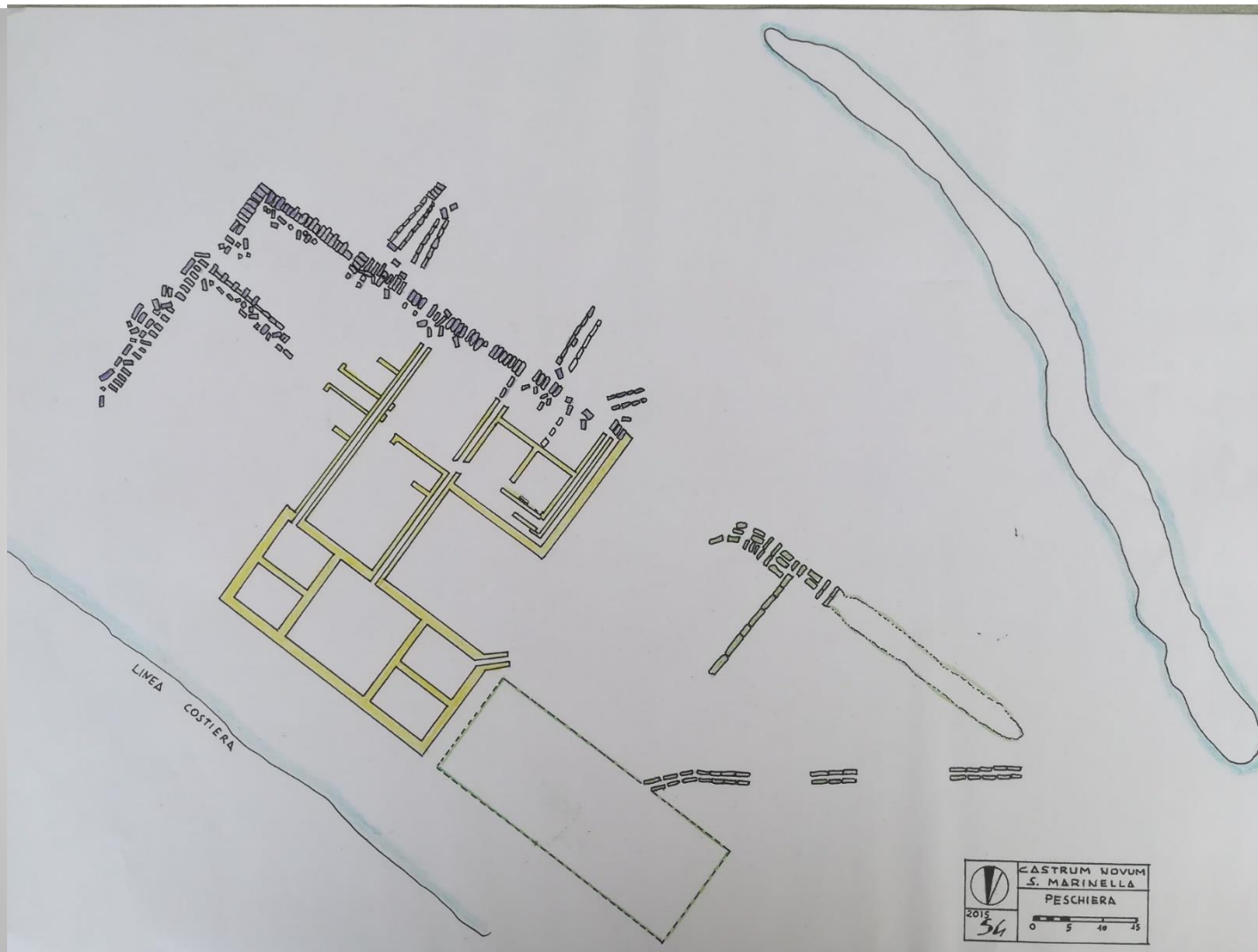




# Fish tank of Castrum Novum



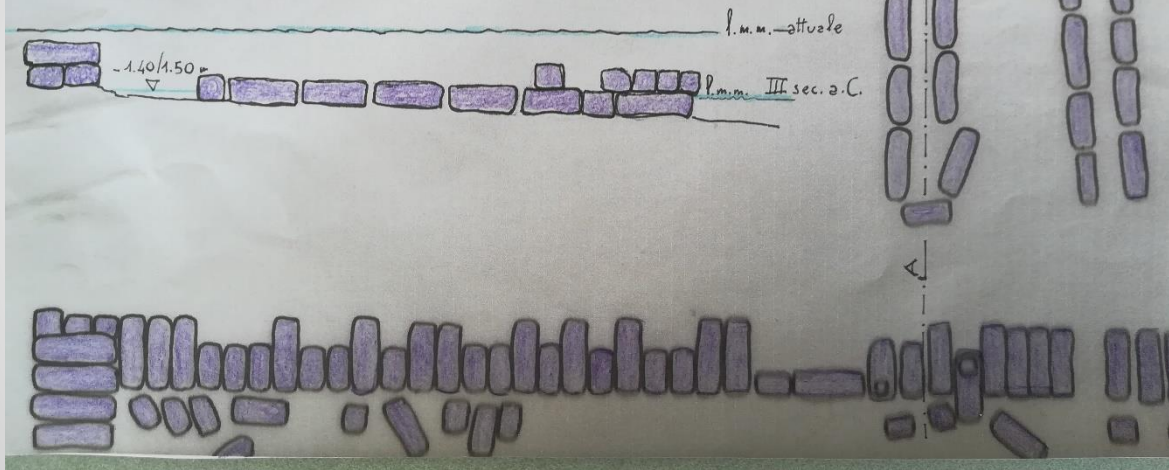




**Fase III-II sec. a.C.**    **Fase intermedia II-I sec. a.C.**    **Fase I sec. d.C.**

 N	<b>CASTRUM NOVUM</b> CITTA' DI SANTA MARINELLA
	<b>PARTICOLARE DELLA          PESCHIERA E DEI          CANALI DI ADDUZIONE</b>
<b>1:400</b>	0 1 2 3 4 5 m
<b>C.S.M.          2011</b>	

SEZIONE A - B





GRAZIE PER L'ATTENZIONE

