

Welter 1938



@K. Baika 2015, based on  
Welter 1938, Knoblauch 1974

21:13

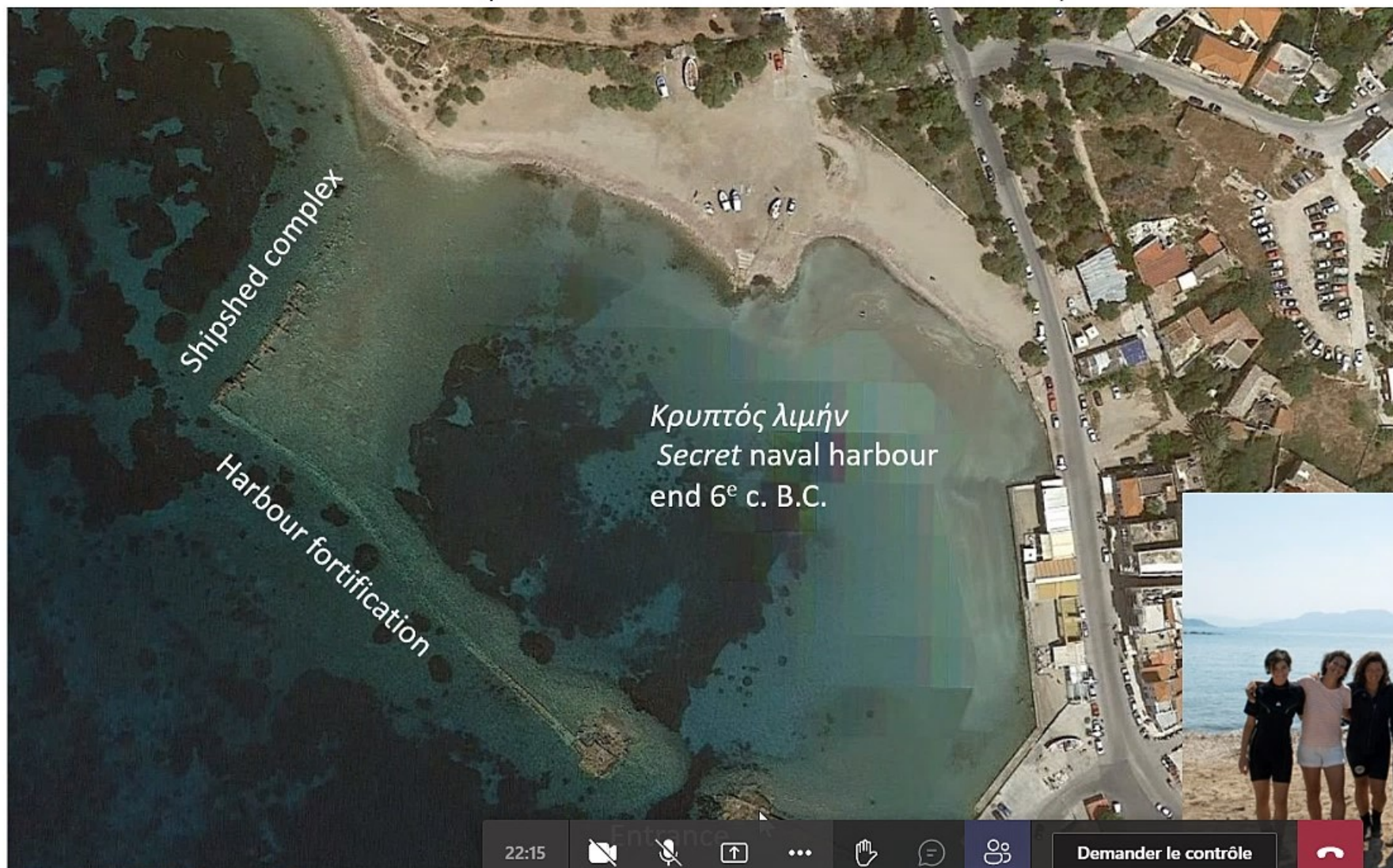
Demander le contrôle

0 100 300 500m

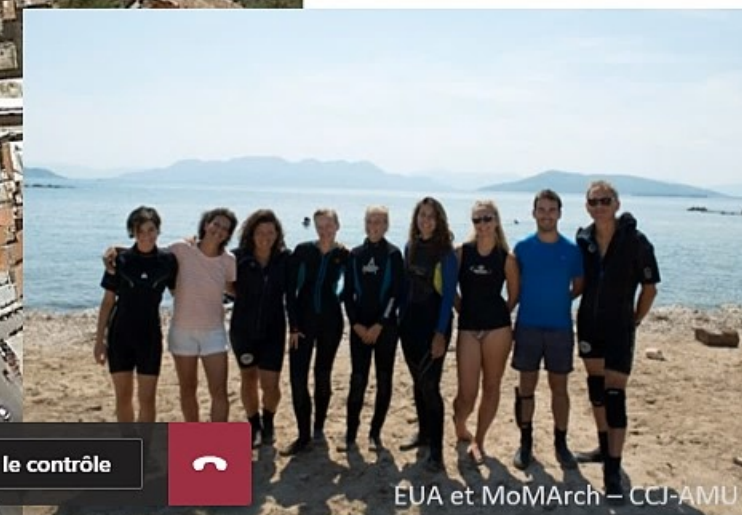


# Aigina Harbour City

Cooperation Project 2018  
Ephorate of Underwater Antiquities- Aix-Marseille Université  
(Centre Camille Jullian - MoMArch)



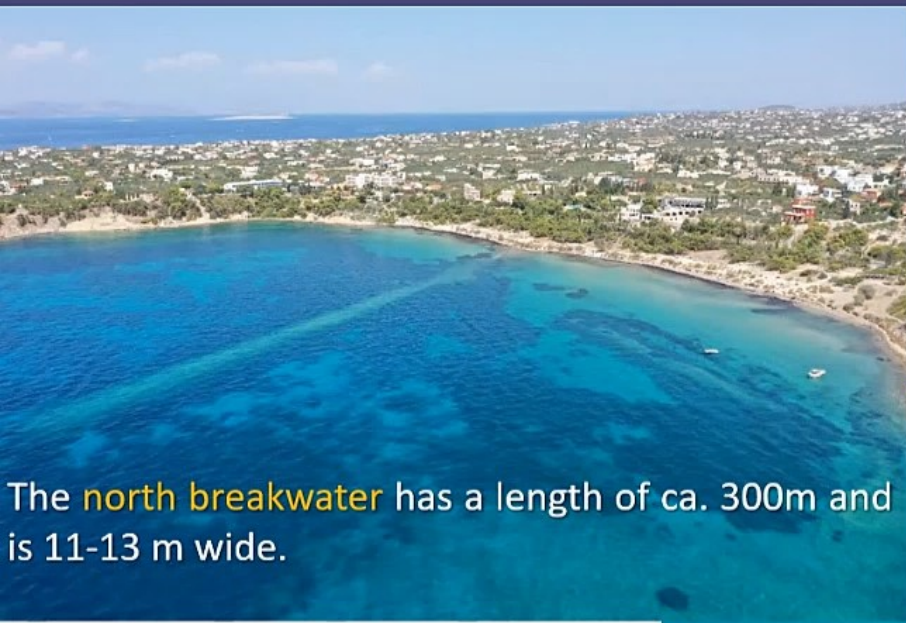
@L.Roux 2018 - CCJ



EUA et MoMArch - CCJ-AMU

22:15 [mute] [microphone] [share] [more] [hand] [chat] [group] [button: Demander le contrôle] [phone]





The **north breakwater** has a length of ca. 300m and is 11-13 m wide.



The **south breakwater** is curving inwards. It is 295m long and ca. 14-18m wide.



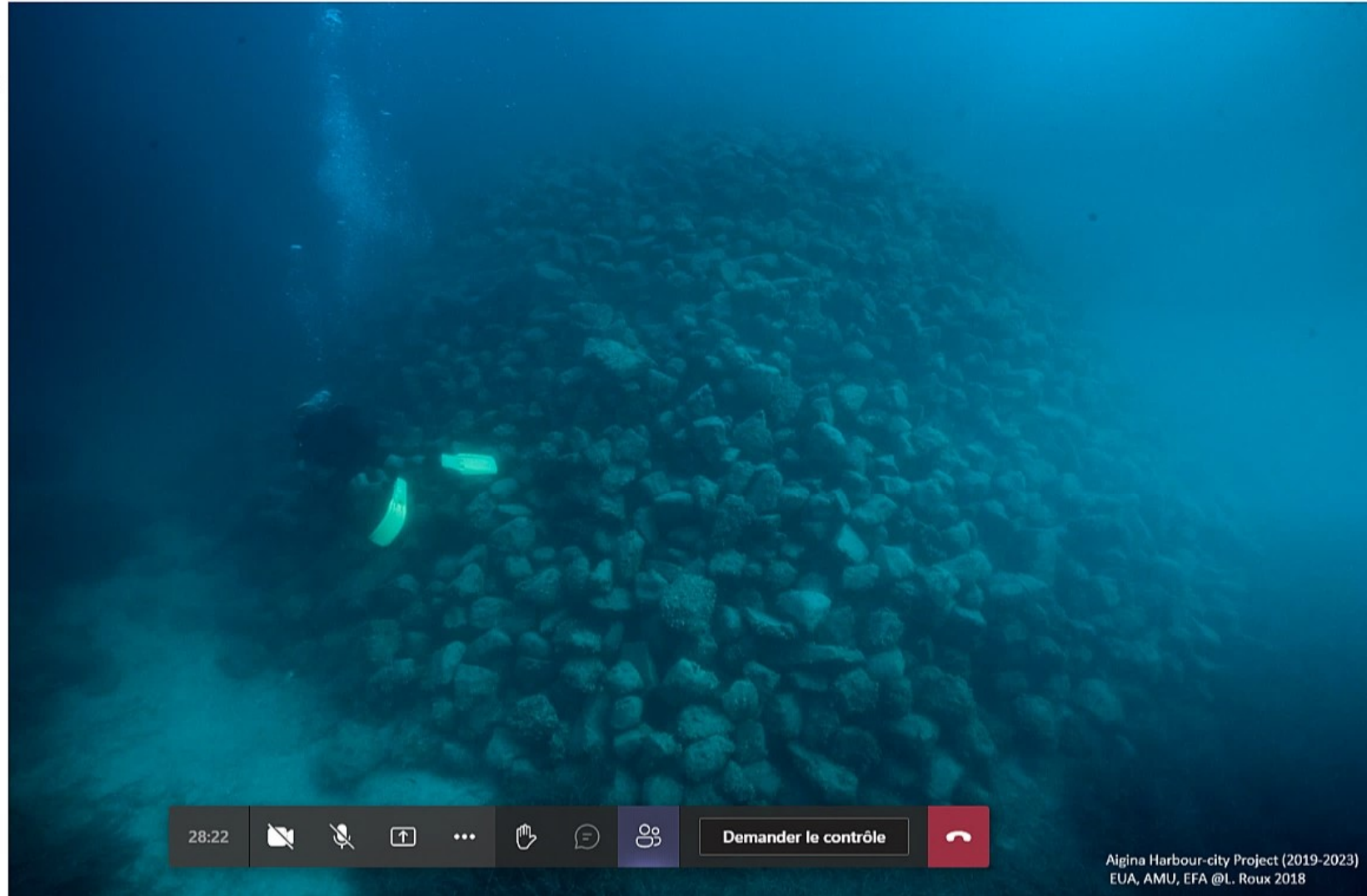
Conical rubble structures



## Artificial conical rubble structures

- defence against enemy fleets?

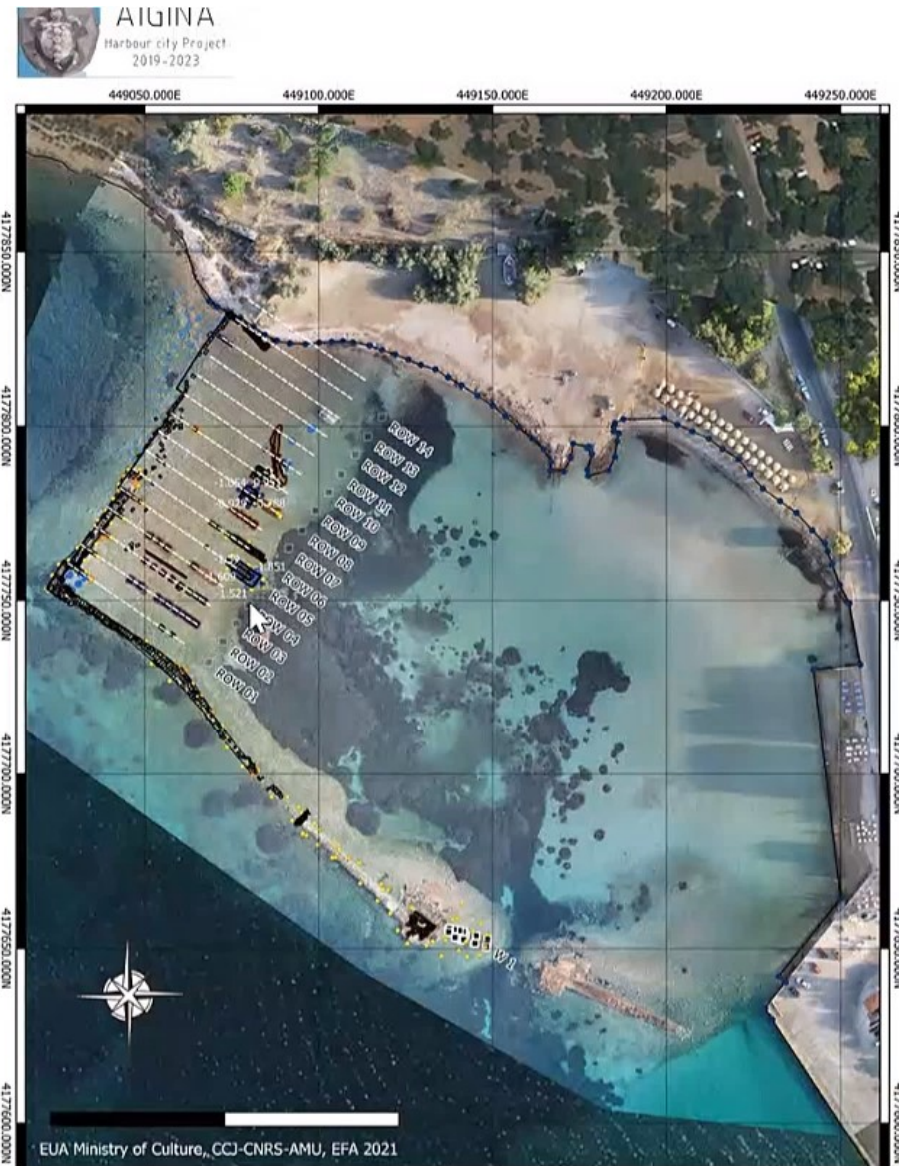
- hydrodynamic role:  
functionality as a second  
breakwater



28:22 [mute] [mute] [share] [more] [hand] [chat] [people] Demander le contrôle [end call]



# Naval harbour NW and SW Fortification Shipshed complex





# Naval harbour - SW Fortification



AIGINA Military harbour  
Harbour entrance  
SW harbour fortification



EPHORATE OF  
UNDERWATER  
ANTIQUITIES



Chaire UNESCO en  
archéologie méditerranéenne de Marseille  
Aix-Marseille University  
France

30:36 [Navigation icons]

Demander le contrôle

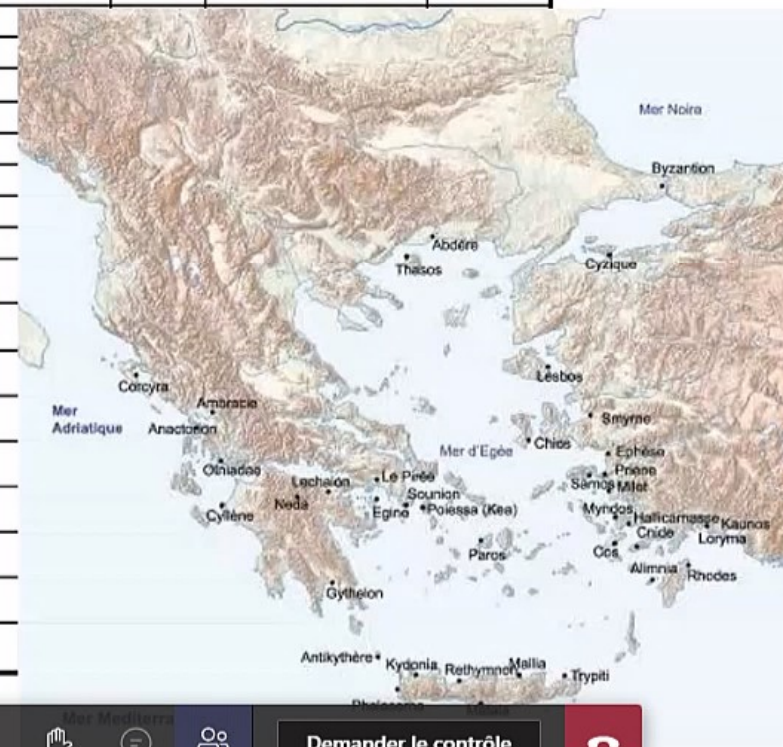
Université – CCJ – MoMArch / EFA,  
L. Roux, CCJ-CNRS 2021.



## Κλειστοί λιμένες (closed harbours) in the Mediterranean

After Strabon et Pseudo-Scylax

Mainland Greece and islands		Chyprus – Levant		Asia Minor		Western Mediterranean		North Africa	
Pirée		Kition	St	Byzance		Syracuse	Sc	Alexandrie	St
Egine		Salamis	Sc	Cyzikos 1	St			Carthage	St
Ambracte	Sc	Tyr	Sc	Cyzikos 2	St				
		Sidon	Sc						
				Caunos	Sc				
Corfou	Sc			Smyrne	St				
Thasos	Sc			Cnide	St				
Samos	Sc			Ephèse	St				
Chios	St			Erythrai					
Gythelon	Sc			Milet	St				
Mytilène	St			Priène	Sc				
Kydonia	Sc			Myndos					
Phalaseria	Sc			Halicarnasse	Sc				
Rhodes									
Potidée									
Oeniadae									
Anaktorion									
Paros ?									
Naupacte ?									

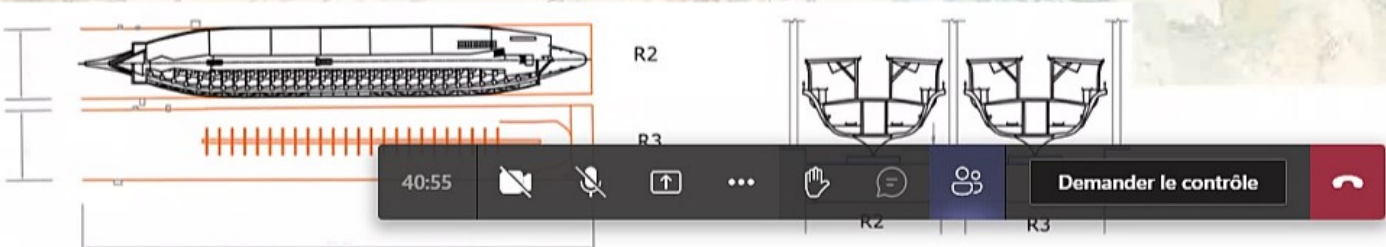
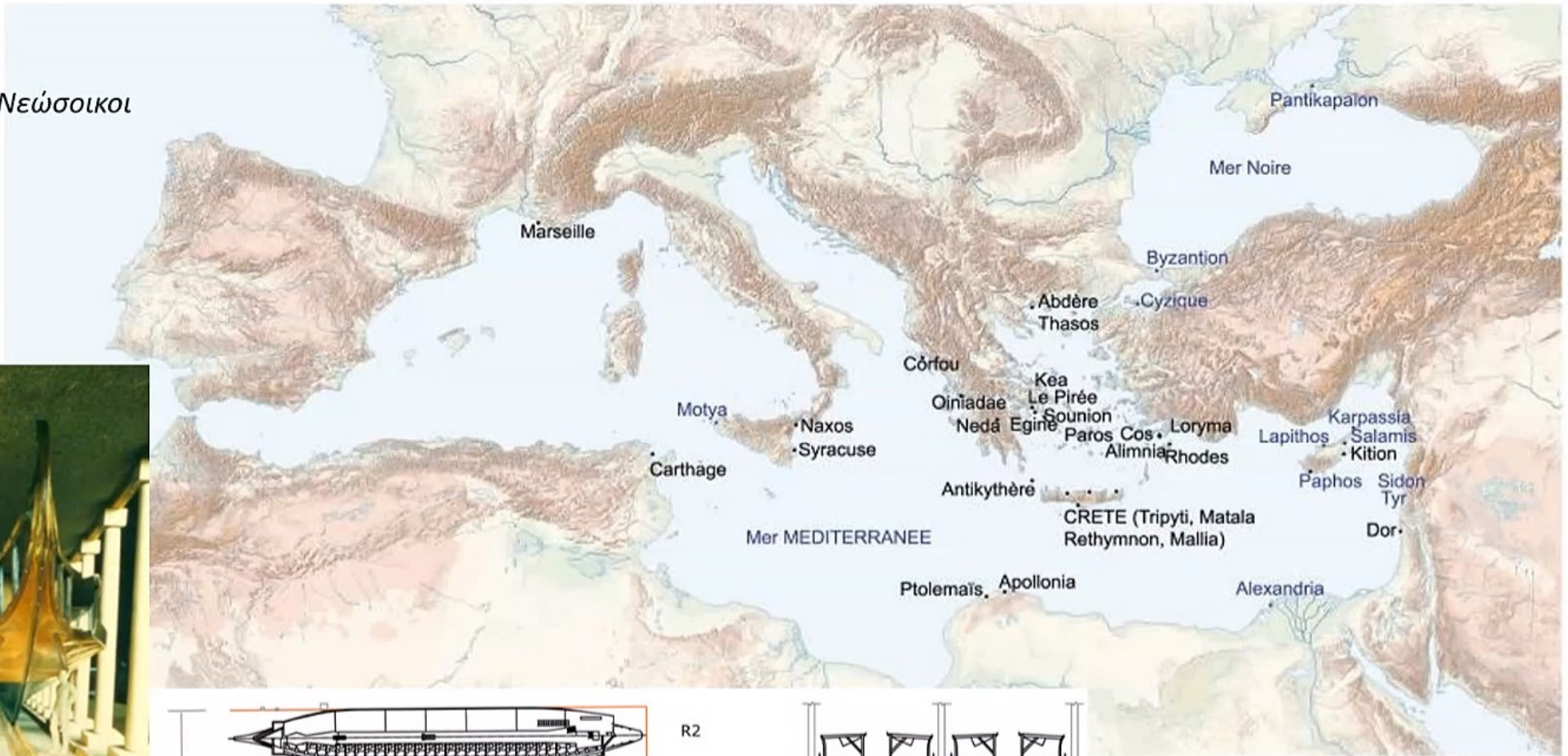




# Shiphed complexes in the Greek world

## Symbols of naval supremacy

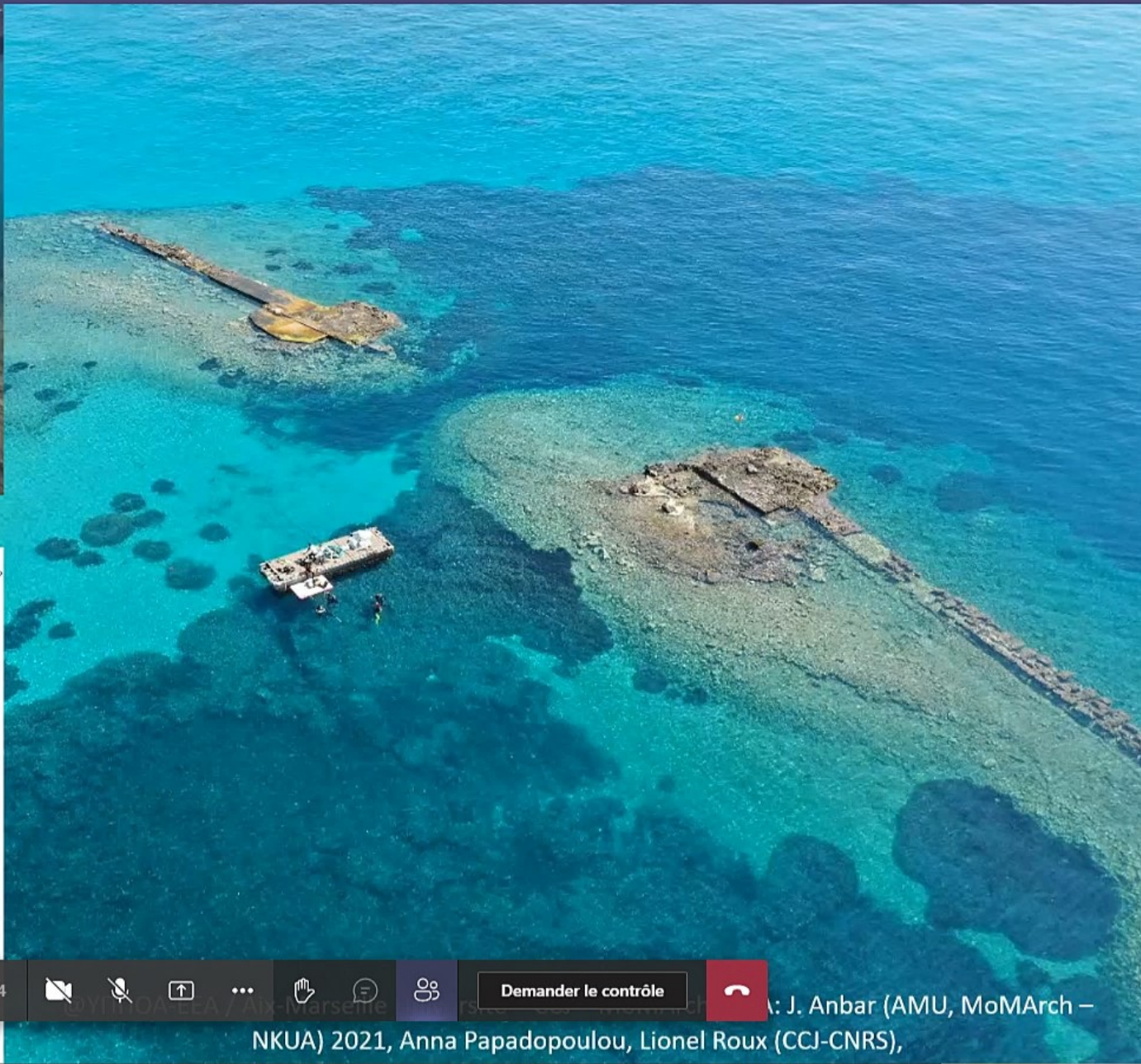
Νεώρια - Νεώσοικοι



Baika 2003

Kallitopi Baika





Argina Military Harbour  
 WE / Châssage avec Fair Ouest  
 06/09/2021  
 A. Papadopoulou

mortaise  
 : gaine assise  
 (11)

mortaise (gaine) au milieu du bloc  
 mortaise (gaine) sur la face  
 mortaise (gaine) erronée  
 mortaise relâchée autour?  
 mortaise pour scellement  
 type (A) au lit de pose de la gaine assise.

scellement en place (goujon?) en plomb  
 mortaise (goujon) au milieu du bloc  
 scellement en place en plomb  
 mortaise pour scellement type (A) au lit de pose de la gaine assise.

PLAN  
 coupe  
 coupe  
 PLAN  
 coupe  
 PLAN  
 coupe  
 PLAN

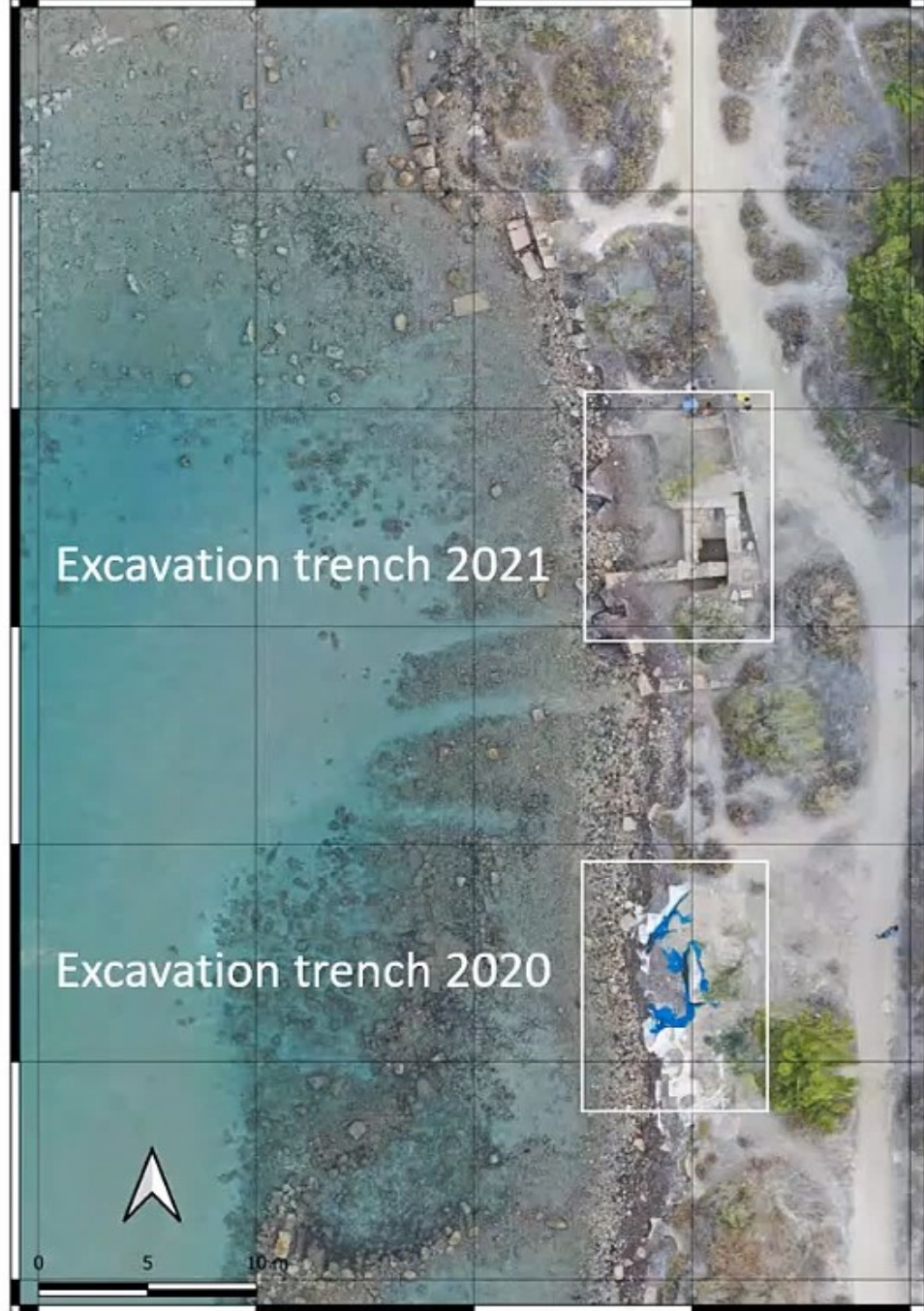
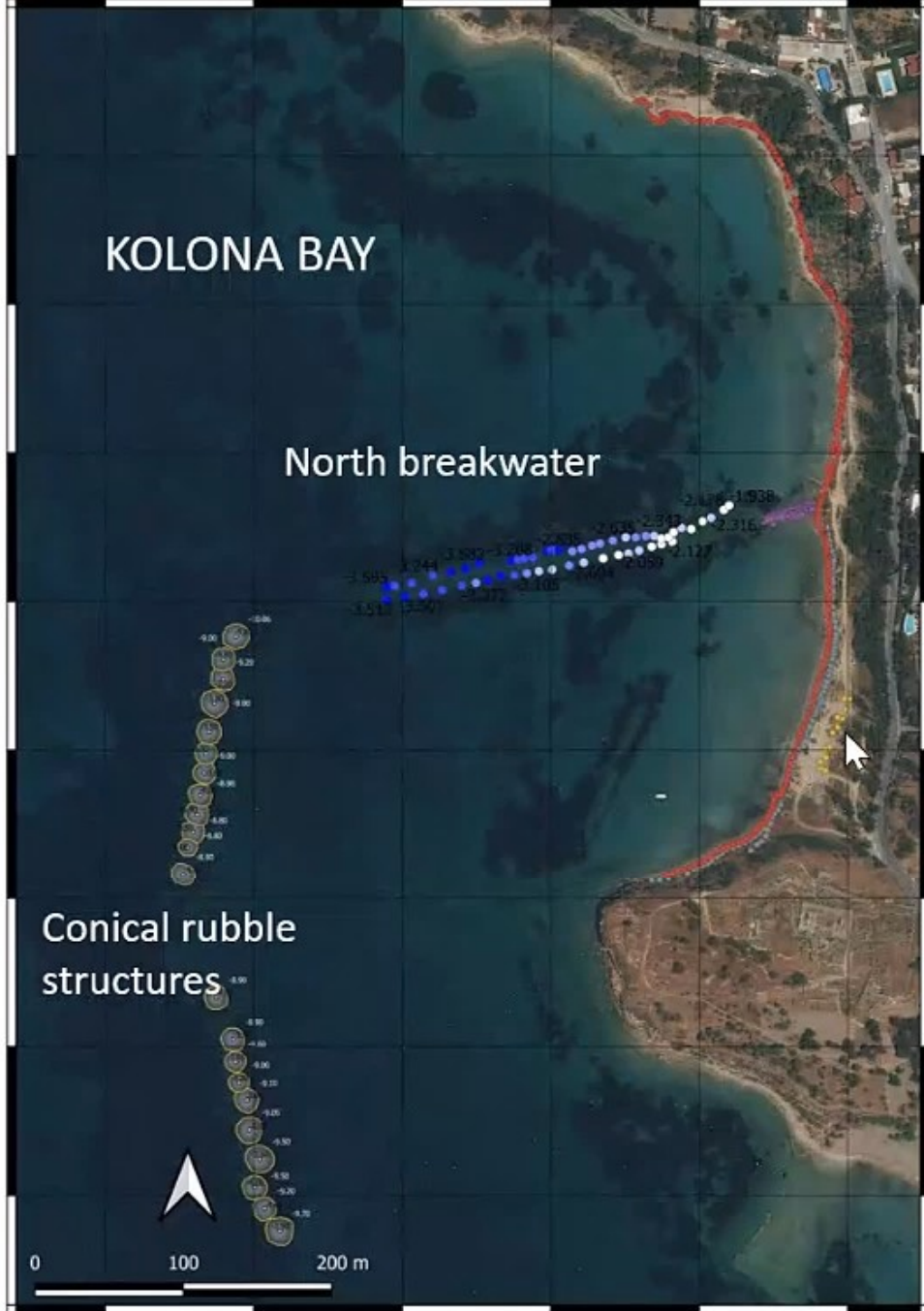
Le point sur joint + d donc la face  
 la vis, la coupe de scellement par recouvrement scellement?

42:14

Demander le contrôle

: J. Anbar (AMU, MoMArch – NKUA) 2021, Anna Papadopoulou, Lionel Roux (CCJ-CNRS),







# Excavation trench 2020

