

A Cretan Landscape through Time: Priniatikos Pyrgos and Environs

Edited by

Barry P. C. Molloy
Chloë N. Duckworth

BAR International Series 2634
2014



Published by

Archaeopress
Publishers of British Archaeological Reports
Gordon House
276 Banbury Road
Oxford OX2 7ED
England
bar@archaeopress.com
www.archaeopress.com

BAR S2634

A Cretan Landscape through Time: Priniatikos Pyrgos and Environs

© Archaeopress and the individual authors 2014

ISBN 978 1 4073 1271 2

Printed in England by 4edge, Hockley

All BAR titles are available from:

Hadrian Books Ltd
122 Banbury Road
Oxford
OX2 7BP
England
www.hadrianbooks.co.uk

The current BAR catalogue with details of all titles in print, prices and means of payment is available free from Hadrian Books or may be downloaded from www.archaeopress.com

Contribution of Geophysical Approaches to the Study of Priniatikos Pyrgos

Apostolos Sarris^a, Nikos Papadopoulos^a and Pantelis Soupios^b

Introduction

One of the conclusions of the Vrokastro Archaeological Survey Project (1986-95) was the importance of the coastal zone of the central to western Gulf of Mirabello area, with emphasis on Priniatikos Pyrgos as it was considered to have expanded the external connections and trade networks of the surrounding settlements. For this reason, the Istron Geoarchaeological Project (Kalpaxis et al. 2006, Hayden et al. 2007) was initiated in 2002 and until 2006 it was focused on the exploration of the Istron River valley and the environs of Priniatikos Pyrgos in an effort to study the nature, extent, condition, resources, and environment of the Istron coastal zone and to broaden our understanding of the cultural development of the site in relation to the changing environmental settings.

The geophysical campaign of the project extended mainly in the area between the promontory of Ioannimiti, where a large Roman harbour site is located, and Nisi Pandeileimon, the centre of the Hellenistic Polis of Istro. Still, the main contextual focus of the prospection survey – which was carried out in three different phases – was the promontory of Priniatikos Pyrgos.

In 2002, geophysical grids were laid out on the promontory of Priniatikos Pyrgos and in its vicinity to the south (Figure 1). The initial stages of the geophysical campaign, which covered more than 10,000m², were aimed at determining the extent of the harbour settlement. Most of the areas explored were olive groves or uncultivated fields, where a concentration of sherds and/or worked stones had been noticed. Area A covered the central and southern part of the promontory of Priniatikos Pyrgos. Areas B and C were located to the south of Area A, in the vicinity of Hall's excavation trench (Hayden and Tsipopoulou 2012) and a Second World War cement bunker, while Areas E and F were located even farther to the south. Area D was located about 60m from the west side of the headland of Priniatikos Pyrgos. On the west side of Area D, a small branch of the Istron River runs towards the sea. Grids constituting Area G were laid out on the top of the western edge of the promontory, where continuous marine erosion had revealed parts of Minoan walls and a pottery kiln about 2-3m below the current surface near the base of the western scarp.

In 2003 the geophysical grids were expanded farther to the east (East Grids), south (South Grids), and west (West Grids) of the promontory. The goal was to explore the wider limits of habitation in the region. One of the targets of the geophysical investigations was the modern soccer

field, which lies about 50-60m from the coast and consists of a large, flat, fenced area of about 800 m². The terrace for the soccer field was cut with a bulldozer into a long gentle slope that rises to the south, towards the direction of the national highway (Agios Nikolaos-Sitia). This area of rising ground is fenced and belongs to Kalo Chorio village ("Village Field" or "Public Field"). In 2003, more than 20,000m² were explored by a combination of EM, magnetic and soil resistance techniques.

In the third phase of the geophysical project (2005), emphasis was given to both shallow and deep prospection of the areas located to the south and east of the promontory of Priniatikos Pyrgos and to the west of Nisi Pandeileimon. A small grid of 20x20m within the soccer field was covered by shallow depth electrical tomography and 2-D soil resistance multiplexer techniques in order to obtain a 3-D image of the archaeological features that had already been found during the previous phases of the geophysical survey. Within the village field, two large sections (Area F1 and Area G1) towards the northern side of the property were covered by electromagnetic, soil resistance multiplexer, and magnetic techniques (Figure 1). High depth electrical tomography and seismic prospection techniques covered an area of about 800m (E-W) x 400m (N-S) within and to the east of the village field. This was aimed towards the construction of a 3-D model of the stratigraphy of the area, the mapping of the bedrock, and the study of the possible location of the port. Finally, two more transects were studied to south of Priniatikos Pyrgos, in order to investigate any possible changes in the course of the Istron River, in relation to its current location.

In addition to the above modules of research, a study of the hierarchy of the settlements of the region in different periods was carried out using GIS spatial analysis tools. The particular approach taken made use of the results of the Vrokastro survey and included an attempt to analyze the dynamics of the settlement patterns and the changing geomorphological conditions that influenced habitation in the region. The spatial distribution of settlements, clustering of sites, their correlation with the geomorphic attributes of the environment (altitude, slope, aspect, geology, etc.), site catchment analysis, least-cost-path and viewshed analyses were all included among the main processing procedures that were computed. According to the results of these, the geological and hydrographic network, the altitude and distance from the coast line, and the proximity to cultivated lands all played an important

^a Laboratory of Geophysical – Satellite Remote Sensing & Archaeo-environment, Institute for Mediterranean Studies, Foundation for Research & Technology, Hellas (F.O.R.T.H.).

^b Laboratory of Geophysics & Seismology, Department of Natural Resources & Environment, Technological Educational Institute of Crete.

A. Sarris et al. 'Contribution of Geophysical Approaches to the Study of Priniatikos Pyrgos'

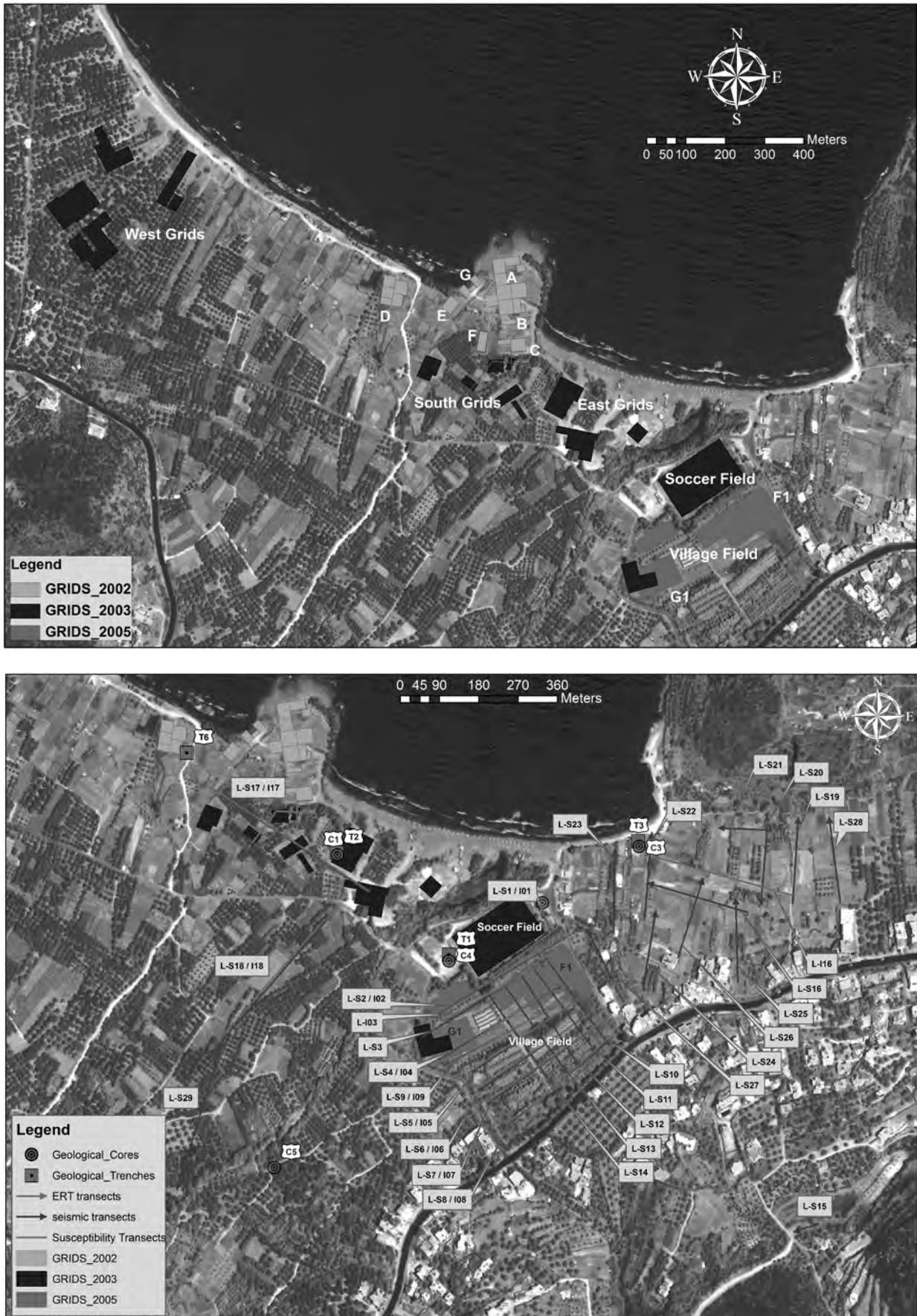


Figure 1. Location of the geophysical grids that were scanned by various methods in the 3 different fieldwork campaigns from 2002 to 2005 (above). Location of the transects across which electrical resistance tomography, seismic and magnetic susceptibility measurements were conducted (below). Most of them are located to the south and east of Priniatikos Pyrgos. The location of the spots where geological cores and geological trenches were conducted is also indicated on the map.

part in the establishment of settlements in the region (Sarris et al., 2005, 2007).

Methodology

The geophysical prospection of the prehistoric and historical coastal site on the limestone headland of Priniatikos Pyrgos was implemented through a ground-based prospection approach and a satellite remote-sensing module, which were used for mapping the area and recording subsurface features. The prospection survey utilised ground-based survey techniques (EDM and GPS mapping, magnetic, soil resistance, and electromagnetic), auger coring for studying the distribution of magnetic susceptibility, and aerial and satellite imagery for mapping, including digitization techniques and GIS for plotting the wider distribution of settlements in 3-D relief in order to study their relation to the topography of the region. Ikonos satellite imagery and a time sequence (1960 to present) of aerial photographs were used for capturing changes in the land-use patterns of the region.

The measurement of the local magnetic field and electrical resistance variations are standard techniques employed in archaeological subsurface surveys. These non-destructive soil resistance techniques are ideal for detecting subsurface features that differ from their surroundings in porosity, density, or water content. The magnetic methods detect features that contain concentrations of magnetic minerals (such as pits, ditches, burned sediments, organic material, and pottery concentrations). The electromagnetic methods are ideal for obtaining information on both the conductivity and magnetic susceptibility of soils. 2-D electrical resistivity surveys use the variation in the horizontal and vertical resistivity of the subsurface to determine the possible location of features, particularly constructed features such as walls. Finally, seismic techniques can be used for large depth investigations (similar to large electrode spacing electrical tomography techniques), for modelling the subsurface geological stratigraphy (Sarris 2008).

More specifically, soil samples were taken along transects within the site and in the fields just south of the promontory. The magnetic susceptibility of the soil samples was measured in order to examine the extent of potential workshop activities in the area. Magnetic susceptibility analysis was employed complementarily to magnetic survey (measurement of the vertical magnetic gradient). In the geophysical survey, a Geoscan FM36 fluxgate gradiometer (Figure 2) was used for measuring the vertical magnetic gradient with an effective investigation depth of about 1-1.5m. The Geoscan RM15 soil resistance meter (Figure 2) with a twin probe configuration of electrodes was used for the measurements of the soil resistance, and electrode spacing was set to ca. 0.5-1m in order to achieve a penetration depth of 1.0-1.5 m. Complementary to the magnetic and soil resistance techniques was the use of a Geonics EM31 conductivity meter (Figure 2) for measuring both the soil conductivity and soil magnetic susceptibility with an effective investigation depth of ca. 4-6m.

Though normally employed in mapping mode, soil resistance techniques can also be adapted to measuring the vertical distribution of resistance and thus the depth of a feature. Electrical Resistivity Tomography (ERT) is a

combination of both lateral profiling and vertical sounding procedures and it provides information about both vertical and lateral variations of resistivity. ERT measurements were carried out using two different approaches. The first involved shallow depth ERT measurements through the use of the Geoscan Research RM15 soil resistance meter along with the Multiplexer MPX15 and the multi-probe frame PA5, using the twin probe configuration with 3 different electrode spacings: 0.5m, 1m, and 2m. The gradual increase in distance between the mobile probes leads to a gradual increase in the penetration depth below ground surface.

For the work in the soccer field, the pole-pole array was employed. The goal was to gather parallel tomographic resistivity data with the pole-pole array along the west-east and south-north directions. Both tomographic surveys were conducted with a 0.5m step interval resulting in 80 tomographic profiles: 40 parallel to the north-south, and 40 parallel to the west-east direction. Each one of these data sets was inverted separately in order to reconstruct the true resistivity distribution of the subsurface. Shallow depth ERT readings were also acquired using the Sting R1 resistivity meter together with the Swift switching unit and a multiclon cable employing the dipole-dipole configuration along the west-east direction (X-Survey). Twenty electrodes were laid out along each line with a 1.0m inter-electrode and inter-line spacing respectively.

The second method involved deep ERT measurements through the use of Syscal Junior 48 (Iris Instruments) and 2 polyclone cables, each consisting of 24 electrode outputs. The electrode spacing was set to 4-5m. Twelve transects were explored, following the location of the seismic transects, and they were used for a better refinement of the results of the seismic survey to the south of Priniatikos Pyrgos and Nisi Pandeileimon. More specifically, 9 tomographies were conducted in the area of the village field (Figure 1). Tomographies I01 to I09 were parallel to each other, in order to obtain systematic measurements of the subsurface within the village field and to create horizontal slices of the subsurface. Tomographies I16 to I18 were conducted to the east of the village field (I16) and to the south of the promontory of Priniatikos Pyrgos (I17 & I18). The goal of the tomography measurements was to investigate the geological formations along the direction of the transects. After running a number of controlled experiments, it was decided to proceed with the rest of the survey using the Schlumberger array. The Schlumberger array provided smoother measurements and larger penetration compared to the Wenner array.

The investigation of past natural geological processes in the region required the use of seismic refraction techniques which have the ability to deeply penetrate the subsurface. The objective of the seismic refraction survey was to determine soil thickness and identify differences in the acoustic properties of fractured and non-fractured rock. The Geometrics R-24 Strataview digital seismograph was used for the acquisition of the seismic data from Priniatikos Pyrgos. The generation of the Primary (or compression) (P) waves was achieved by the impact of a 7kg sledgehammer against a metal plate on the ground (struck vertically down). A total of 29 seismic lines (Line01-Line29) were conducted in the study area (Figure 1). The geophones spacing was different in every line (~7-10m) depending on

A. Sarris et al. 'Contribution of Geophysical Approaches to the Study of Priniatikos Pyrgos'



Figure 2. Snapshots from the geophysical survey in the wider area of Istron (from left to right): GPS mapping survey, fluxgate gradiometer survey, electrical resistivity survey and electromagnetic survey.

the available space for the seismic acquisition. A setup of 24 12Hz OYO-Products geophones was used in all seismic lines except in lines 20 to 24 where 12 geophones were used.

A specific map coordinate system was chosen for each geophysical mosaic of grids, which was registered to the appropriate geodetic system of coordinates (namely EGSA'87), based on the GPS/EDM mapping data. Thus, after the rectification of the satellite image, it was possible to overlay the geophysical maps at their corresponding location. The above information was entered into a Geographical Information System which was connected to an elaborated database regarding the archaeological sites and their surrounding landscapes.

Results

Magnetic, Soil Resistance and Electromagnetic Measurements

Some strong dipole magnetic anomalies in Area A, in good correlation with the EM31 in-phase measurements, were suggested at the central section of the promontory, pinpointing the existence of a cluster of kilns, extending over an area of 5-6m in diameter (Figure 3). The high density distribution of slag fragments at this location suggested that at least some of the above facilities may have been used for metal production. The relatively high values of the soil resistance measurements (up to 101 Ohms) and their loose correlation with the magnetic data indicated that most of the features in Area A are in close contact with the bedrock, justifying the failure to register the badly preserved wall foundations that were located in the central region of Area A by subsequent excavations (trenches A1000, A2000, A4000 and A5000 (Hayden & Tsiopoulou 2012). Similar results were drawn from mapping the soil conductivity through the measurements of Geonics EM31. Furthermore, the results of the geophysical survey suggested a possible wall enclosure of the promontory to the north.

Massive rubble walls forming corners and rooms were also present along the rocky plateau to the west of the promontory. Multiphase occupation of the site was suggested on the basis of stratigraphic evidence, partially uncovered due to the gradual erosion of the western scarp. The measurements of the vertical magnetic gradient which were carried out on the top of the west region of the promontory (Area G) revealed a number of linear features, probably related to the existence of architectural remains (Figure 4). Although most of the linear features were aligned in a north-west to south-east direction, the fuzziness of the magnetic signals suggests that the architectural features may belong to more than one occupation phase. Two strong

dipole anomalies towards the south-east section of Area G could also be correlated to kiln structures, probably used for pottery production as there was no evidence of any surface slag distribution. Furthermore, soil magnetic susceptibility values indicated a decreasing tendency towards the south-west edge of Area G, designating the probable limits of the intensive occupation of the site.

Low frequency magnetic susceptibility values in Area A ranged from 13.1emu/gr to 423.8emu/gr, while the frequency dependent susceptibility reached the value of 17.65%. Although the maximum values of both high and low frequency magnetic susceptibilities were shown around the central part of Area A, where possible kilns and furnaces have been suggested, the high values of the frequency dependent susceptibility extend farther towards the southern and eastern sections of the area, signifying a possible expansion of the settlement in certain phases in these directions. Two magnetic features in the south-east part of Area C outlined architectural complexes of dimensions 5x4m and 3x2m together with a few more isolated anomalies reaching the value of 25nT/m. The particular features could be correlated to remnants of rubble walls that extend to the east of Area C towards the sea from the eastern scarp of the promontory. A few more architectural features and a possible kiln feature (~2x2m) were indicated farther to the south in Areas E and F.

All of the geophysical data suggest that the locus of habitation and workshop activities was the main headland of the promontory. This is also supported by the magnetic susceptibility measurements: after exhibiting its highest values in Areas A and G, magnetic susceptibility falls close to background levels (around 35-40emu/gr) to the south of Area C. In contrast, frequency dependent susceptibility values are kept at relatively high levels (above 10%, reaching a maximum of 29.51% compared with 17.65% in Area A). This may imply either that the habitation of the region was expanded farther to the south of the promontory, or that the specific values may have been caused by the disturbed upper soil horizons. Indeed, the high soil resistance values to the west of Priniatikos Pyrgos (Area D) and close to the small branch of the Istron River suggested areas of disturbed soil and rubble, probably deposited by the repeated cycles of seasonal flooding of the river.

Taking into account the direction (towards the sea) of a pair of wide, high resistance anomalies (probably correlated to disturbed soil, rubble deposition and other alluvium carried away from older branches of the Istron River) located towards the south-west and south-east side of the promontory, it may be also suggested that the older Istron

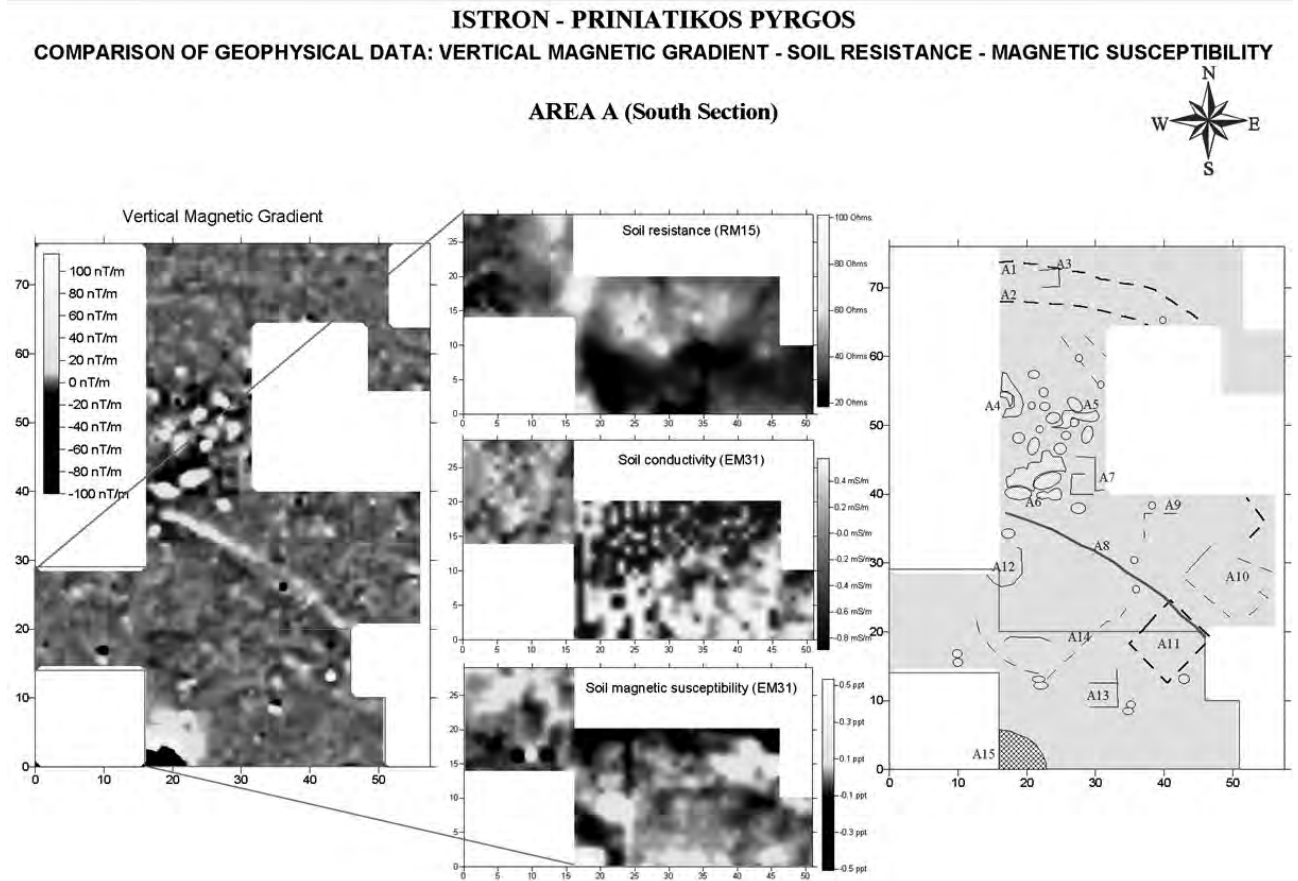


Figure 3. Results of the magnetic survey in Area A (left) and their corresponding diagrammatic interpretation (right). The southern part of Area A was scanned by both magnetic and electromagnetic methods (middle), resulting in a large degree of correlation of the suggested anomalies.

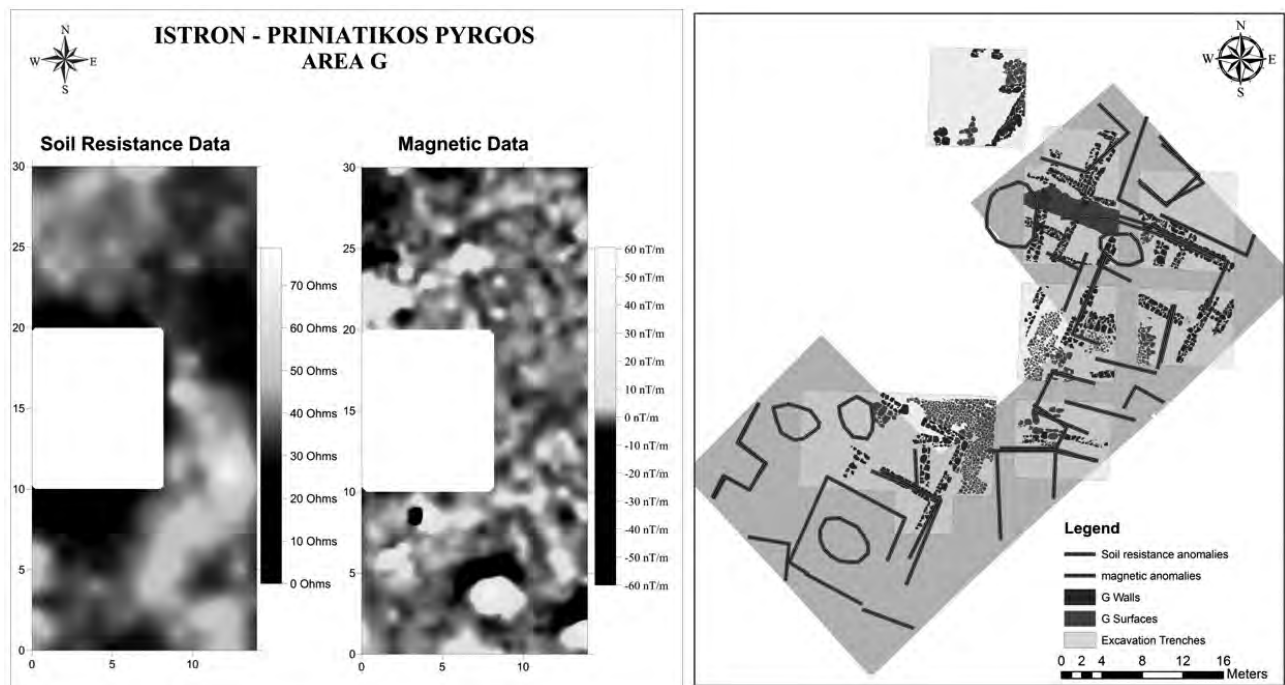


Figure 4. Results of the soil resistance and magnetic survey in Area G (left). To the right is the diagrammatic interpretation of the geophysical anomalies in relation to the results of the excavations that were carried out in specific trenches within the area.

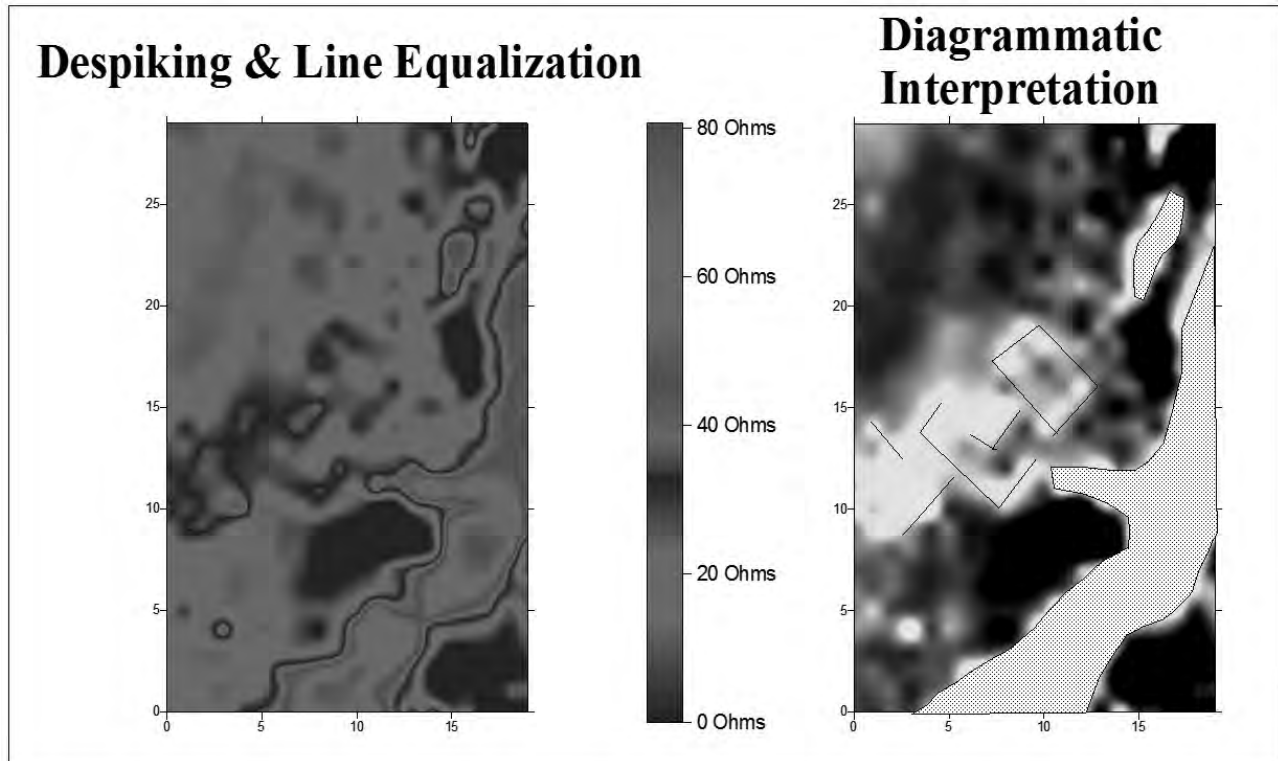


Figure 5. Results of the soil resistance survey carried out in grid F to the south of the promontory of Priniatikos Pyrgos (see Fig. 2). The approximately 5m wide, high resistance linear anomaly that extends in a south-west to north-east direction seems to project towards the east side of the promontory. To the west of it there are also indications of the presence of an architectural complex.

River branches were directed to the sea from both sides of the Priniatikos Pyrgos promontory, probably leaving a small path to the mainland from the south-west direction (Figure 5). This is also supported by the sedimentological analyses and OSL datings (Zacharias et al. 2009). If this hypothesis is true, then the settlement might have been expanded slightly away from the workshop area, as has been noticed at Gouves (Vallianou, 1997, 333), where in similar river delta settings, the centre of ceramic production seems to be separated from the main settlement.

The density of architectural remains increases to the south and to the east, in the area of Kambos (about 250m to the east) where the village and soccer fields are located. Massive walls were registered by magnetic and soil resistance techniques under the modern soccer field. Almost all techniques pinpointed that architectural remains extend farther to the south (in the village field and to the west of it), located up to a depth of less than 2m below the modern surface and having an alignment deviating from the north (north-east to south-west, or north-west to south-east).

Shallow Depth Tomography in the area of the Soccer Field.

Only a small section (20x20m) of the soccer field was explored through ERT techniques (AGI Sting with a Dipole-Dipole array), aiming at verification of EM and resistivity data that suggested the presence of an underlying building. The individual tomographies were combined into one single data set and processed with a 3-D inversion algorithm in order to reconstruct the subsurface resistivity distribution in three dimensions as horizontal slices of increasing depth. Indeed, the remnants of a rectangular wall structure began to appear

in the first depth slice (depth 0-0.35m), and extend up to a depth of about 1.5m below the current surface (Figure 6). The same region was also scanned through the modification of Geoscan RM15/MPX15/PA5 for acquiring tomographic data with a pole-pole array in different directions (along east-west and south-north directions). The inversion along X, Y and XY directions resulted in identical reconstructed models showing excellent agreement with the conventional ERT approach (Figure 6). The angular feature probably represents part of a building of dimensions larger than 15x15m which extends farther to the south of the soccer field. Similar types of near-to-surface targets were identified all over the soccer field, and to the south in the village field.

Deep Electrical Tomography

Most of the deep tomographies were conducted in the region between Priniatikos Pyrgos and Nisi Pandeileimon. The extension of the electrical tomography profiles reached a length of almost 200m, achieving a penetration depth of more than 20m at the centre of the profiles.

Immediately to the south of the soccer field, all transects suggested that the superficial cover of the area consists of alluvial/Quaternary deposits with resistivity values ranging between 50-150 Ohm-m and variable thickness up to 2-4m. A second layer was also recognized to consist of cohesive sediments with resistivity values between 20-40 Ohm-m. From the depth of approximately 20m and below, a transition zone occurs between sediments and bedrock, probably highly weathered and filled with water, having resistivity values below 10 Ohm-m. Moving to the south, electrical tomography data suggested increasing thickness

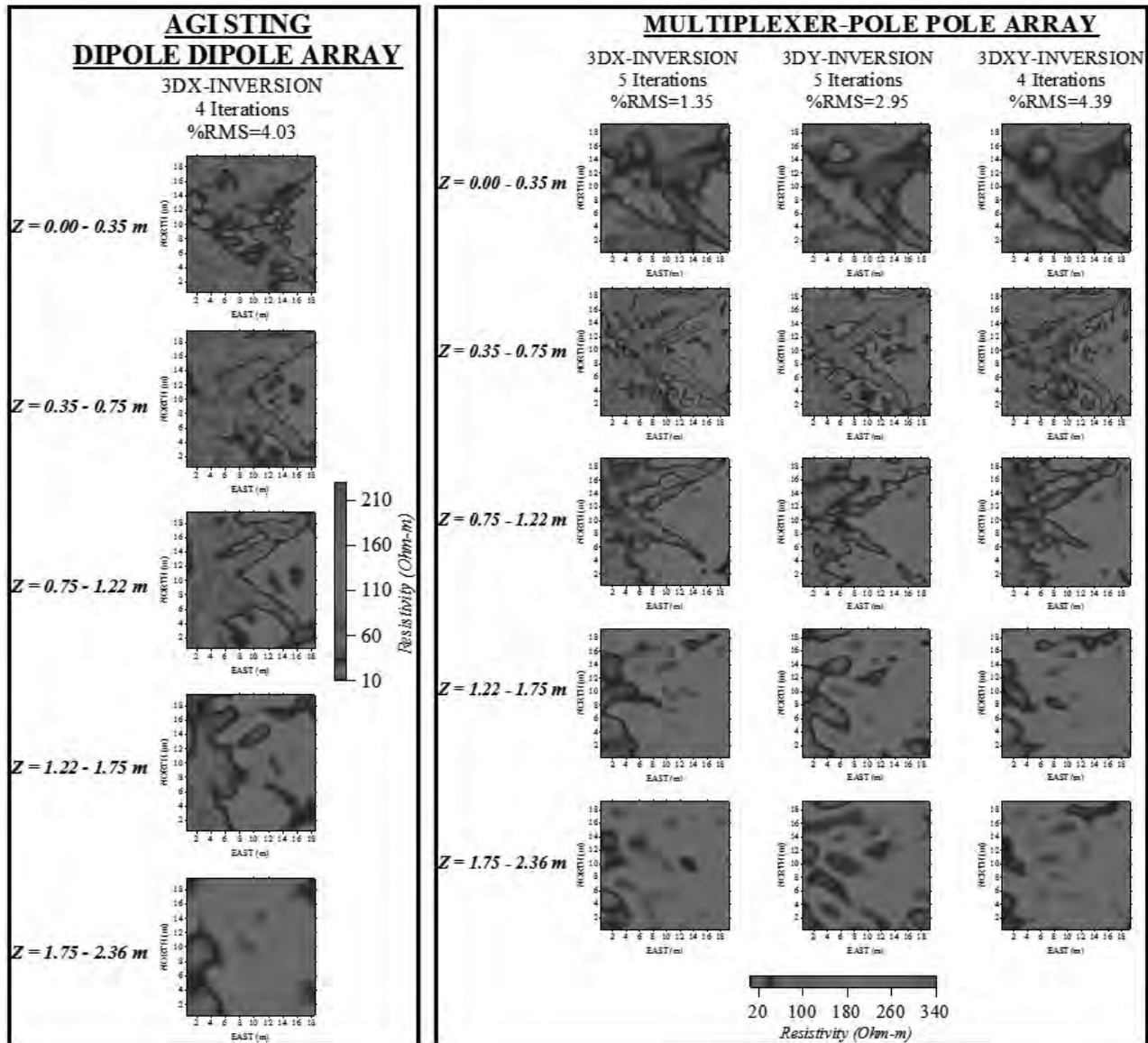


Figure 6. 3-D resistivity model (presented in slices) resulting from ERT dipole-dipole configuration of electrodes (left) and the corresponding resistivity models along X (west-east), Y (south-north) and XY (west-east and south-north) direction of the pole-pole data collected with the RM15/MPX15 (right).

of the upper alluvial deposits (5–6m) which is in agreement with the slope of the terrain, and a fracture zone that extends below the medium weathered layers was recorded. The particular fracture zone seems to shift towards the east and to expand within the public field to the south, and can be related with a geological fault, filled with water, which could also explain the corresponding low resistivity zone that appears in that specific region. This fault, which has also been suggested by the seismic data, has a north-east to south-west orientation, and may also be correlated with past heavy landslide episodes that have been reported by the locals originating from the southern hills located to the south of the national road.

Seismic Refraction Survey

A general observation of the travel times of the seismic waves suggested that low velocities dominate, indicative of the alluvial deposits that cover the top surface of the area under study. All profiles showed very strong variations in the interface between the second and third layers. This was

considered to be indicative of the strong velocity anomalies caused by the existing inhomogeneity of the bedrock. In an effort to classify the resultant velocity models based on the corresponding formations, they were distinguished in four different layer velocities as well as four geological formations. Based on this refined categorisation (velocity based on geology), four layers were recognised that correspond to specific geological units. According to this scheme, the presence of specific formations in the area was able to be mapped by creating an approximate buffer around the seismic transects (Figure 7).

Six backhoe trenches (4–5m deep) were excavated in order to collect soil samples for sedimentological analyses (Zacharias et al. 2009). Comparison between the results of the seismic survey and the geological test trenches shows that they seem to be in agreement, at least in areas where trenches were excavated in the vicinity of the seismic lines. More specifically, trench T2, which was located close to the middle of transect L-S17/I17, identified the upper layer (which was modelled as sedimentary deposits of quaternary

A. Sarris et al. 'Contribution of Geophysical Approaches to the Study of Priniatikos Pyrgos'

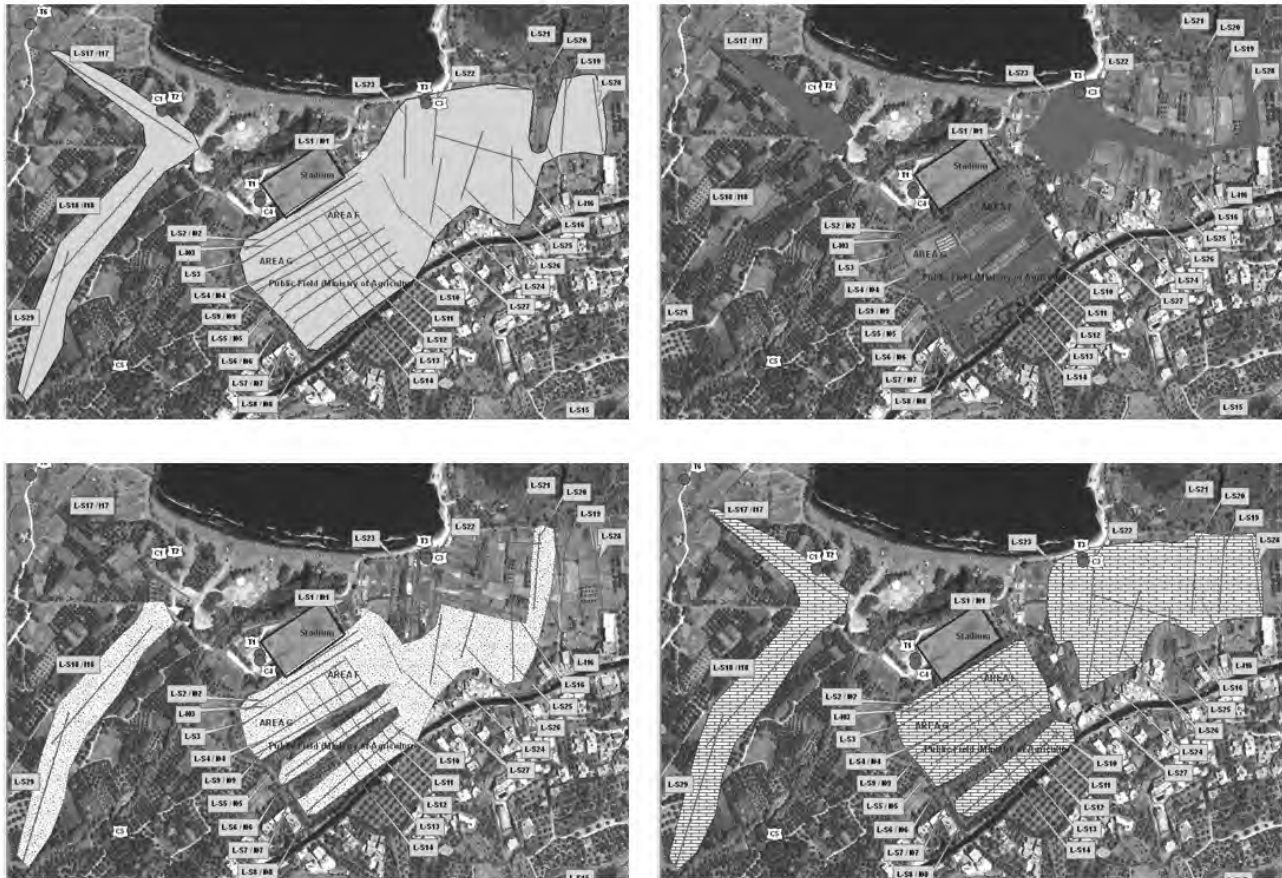


Figure 7. Distribution of the different geological formations in the wider area of Priniatikos Pyrgos.

- Upper left: Presence of alluvial deltoid deposits (sand, gravel, silt, organic mud, clay). Average velocity of 491m/sec. Found in all seismic transects, except Line 20.
- Upper right: Presence of lower and upper terrace deposit (slightly cemented gravels, sand and clay), possibly saturated in places. Average velocity of 1830m/sec. Found in all measured lines except lines 05, 07, 13, 15-17, 19, 21-23 and 28.
- Lower left: Presence of sandstone, mudstone, conglomerate (Kilic & Bakacak formation). Average velocity of 2400m/sec. Found in lines 05, 07, 13, 16, 17, 22, 23 and 28.
- Lower right: Presence of weathered limestone or cohesive conglomerate. Average velocity of 4589m/sec. Found in all measured lines except lines 01, 07, 15, 25 and 27.

alluvial formation) as consisting of silty sand/silt/clay. Similarly, trench T3, which was located at the end of profile L-S22, identified the upper layer to consist of sand with gravels/silty sand with clay and angular pebbles.

The 3-D model of the boundary between the sediments (soft and grained materials) (2nd layer) and the bedrock (cohesive conglomerate or weathered limestone) (3rd layer) was constructed in a similar way. Emphasis was given to the area to the west, where a denser network of seismic lines was laid, providing a better interpolation for the interface mapping. The depth of the bedrock was found to range from 20m to 40m.

According to the geological data, most of the valley of Istron village consists of alluvial/quaternary deposits and fragmentary pockets of limestone sediments. A vertical coastal subsidence of 2-3m that followed the Roman period (Shaw 1990, Raban 1991) submerged a number of coastal sites in the area, as can be seen even today within the shallow coastal waters. An extension of the ancient coastline farther to the north does not leave much space for natural harbour sites (Theodorakopoulou et al. 2005; Pavlopoulos et al. 2007). However, there are a few possibilities. One is the estuary of the Istron River that

today is observed to flow into the sea from the west of Priniatikos Pyrgos. Although its location may have shifted over time, moving to the west and east of Priniatikos Pyrgos, its estuary may have typically been used as a protected harbour in antiquity. Other potential locations are the areas to the south of Nisi Pandeileimon. This large promontory, to the east of Priniatikos Pyrgos, may have once been separated from the rest of the mainland (as its name 'nisi' suggests). Landslides have been reported by the locals and may have been responsible for connecting Nisi Pandeileimon with the rest of the mainland. The above suggestions are also in agreement with the hydrogeological data of the region, which indicate that most of the coastal areas in the vicinity of Priniatikos Pyrgos consist of carstic formations of medium to high permeability and alluvium deposits of variable permeability.

Final remarks

The data presented above indicate that the coastal site of Priniatikos Pyrgos was used as a primary industrial centre of the Vrokastro region for millennia; probably as a pottery workshop in the prehistoric period (Nodarou and Moody, this volume) and as a metal working facility (Filippaki et al., this volume) during the later phases of its occupation.

A Cretan Landscape Through Time: Priniatikos Pyrgos and Environs

Located on a coastal hill in the middle of the flood plain of the Istron River, the site offered ideal conditions for the operation of ceramic kilns and metal furnaces, as the north-westerly winds could provide the necessary conditions for their firing. Furthermore, it can be suggested that the

establishment and evolution of the settlements and the related workshops in the area of Priniatikos Pyrgos may have been closely related to their proximity and access to raw resources, such as granodiorite ores that have been located in the local geology.

Bibliography

- Adams, B.J. and J.E. Byrd (eds.) 2008. *Recovery, Analysis and Identification of Commingled Human Remains*. Totowa (NJ): Humana Press.
- Adams, E. 2004. Power and ritual in Neopalatial Crete: a regional comparison. *World Archaeology* 36 (1): 26-42.
- Adkins, L. and R. Adkins 1989. *Archaeological Illustration*. Cambridge: Cambridge University Press.
- Albani, J. and N. Poulou-Papademetiou 1990. Church complex at Pseira. Excavation at Pseira, 1987-1988. *Cretan Studies* 2: 1-9.
- Alexiou, S. 1951. Protominoikai tafai para to Kanli Kastelli Irakliou. *CretChron*. E: 275-94.
- Alexiou, S. and P. Warren 2004. *The Early Minoan Tombs of Lebena, Southern Crete*. Sävedalen: Paul Åströms Förlag.
- Allsebrook, M. 1992. *Born to Rebel: The Life of Harriet Boyd Hawes*. Oxford: Oxbow.
- Anagnostakis, I. 2008. Βυζαντινός οικικός πολιτισμός. Εθνικό Ίδρυμα Ερευνών. [Wine culture in Byzantium. The Bithynian example.] Ινστιτούτο Βυζαντινών ερευνών. Το Βυζάντιο σήμερα 6. Athens.
- Antonaras, A.Ch. 2008. Glass lamps of the Roman and Early Christian periods. Evidence from the Thessaloniki area. In Cristian-Aurel Roman and Nicolae Gudea (eds.) *Trade and Local Production of Lamps from the Prehistory until the Middle Age*. Acts of 2nd International Congress on Ancient and Middle Age Lighting Devices. Zalău – Cluj-Napoca, 13th-18th May 2006. Cluj-Napoca: Editura Mega. pp.23-30.
- Arnold, P. 2000. Working without a net: recent trends in ceramic ethnoarchaeology. *Journal of Archaeological Research* 8: 105-33.
- Arz, H.W., F. Lamy, J. Pätzold, P.J. Müller and M. Prins 2003. Mediterranean moisture source for an early-Holocene humid period in the northern Red Sea. *Science* 300: 118–121.
- Atherden, M.A. 2000. Human impact on the vegetation of southern Greece and problems of palynological interpretations: a case study from Crete. In P. Halstead and C. Frederick (eds.) *Landscape and landuse in postglacial Greece*. Sheffield: Sheffield Academic Press. pp.62-78.
- Atherden, M.A. and J.A. Hall 1999. Human impact on vegetation in the White Mountains of Crete since AD 500. *The Holocene* 9: 183-93.
- Atkinson, K.B. (ed.) 1996. *Close Range Photogrammetry and Machine Vision*. Dunbeath: Whittles Publishing.
- Bachmann H. G. 1982. The identification of slags from archaeological sites. *Institute of Archaeology Occasional Papers* 6: 30.
- Banou, E. 1998. The Pottery. In P.P. Betancourt and C. Davaras (eds.) *Pseira II: Building AC ("The Shrine") and Other Buildings in Area A*. University Museum Monograph 94. Philadelphia: University of Pennsylvania Museum. pp.12-26.
- Bar-Matthews, M. and A. Ayalon 2004. Speleothems as palaeoclimate indicators, a case study from Soreq Cave located in the Eastern Mediterranean region, Israel. In R.W. Battarbee, F. Gasse and C.E. Stickley (eds.) *Past Climate Variability through Europe and Africa*. Dordrecht: Springer. pp. 363-91.
- Bar-Matthews, M. and A. Ayalon 2011. Mid-Holocene climate variations revealed by high-resolution speleothem records from Soreq Cave, Israel and their correlation with cultural changes. *The Holocene* 21 (1): 163-71.
- Barag, D. 1967. The glass. In M.W. Prausnitz (ed.) *Excavations at Shavei Zion: the Early Christian church*. Rome: Centro per la antichita e la storia dell' arte del Vicino Oriente.
- Barker, G. 1995. *A Mediterranean Valley: Landscape Archaeology and Annales History in the Biferno Valley*. Leicester: University of Leicester Press.
- Barnard, K.A. and T.M. Brogan 2003. *Mochlos IB: Period III. Neopalatial Settlement on the Coast. The Artisans' Quarter and the Farmhouse at Chalinomouri. The Neopalatial Pottery*. Prehistory Monographs 8. Philadelphia: University of Pennsylvania Museum.
- Bassiakos J.E., C.T. Michael and D. Haikalis 1989. Ancient Metallurgical and Mining Studies on S.E. Peloponnese (Greece). In Y. Maniatis (ed.) *Archaeometry, Proceedings of the 25th International Symposium*. Elsevier. pp.253-9.
- Bate, R.H. et al. 1985 *A Stereo-Atlas of Ostracod Shells*. Volume 12. Part 1. British Micropalaeontological Society.
- Baudrillard, J. 1994. *Simulacra and Simulation*. Ann Arbor: University of Michigan Press.
- Becker, M.J. and P.P. Betancourt 1997. *Richard Berry Seager: pioneer archaeologist and proper gentleman*. Philadelphia: University of Pennsylvania Museum.
- Bello, S. and P. Andrews 2006. The Intrinsic Pattern of Preservation of Human Skeletons and its Influence on the Interpretation of Funerary Behaviours. In R. Gowland and

Bibliography

- C. Knusel (eds.) *Social Archaeology of Funerary Remains*. Oxford: Oxbow. pp.1-13.
- Bellot-Gurlet, L., O. Pelon and M.L. Sfériadès 2008. Détermination de provenance d'une sélection d'obsidiennes du palais minoen de Malia (Crète). *Comptes Rendus Palevol* 7 (7): 419-27.
- Berger, J. 1972. *Ways of Seeing*. London: Penguin.
- Berger, J-F. and J. Guilaine 2009. The 8200 cal BP abrupt environmental change and the Neolithic transition: A Mediterranean perspective. *Quaternary International* 200: 31-49.
- Besonen, M.R., M.F. Rosenmeier, J.H. Curtis, H. Weiss, J.A. Moody and C.R. Magill 2011. Increasing evidence for a pronounced, mid-1st millennium AD desiccation event in the Eastern Mediterranean. Paper given at *AUG Chapman conference on Climates, Past landscapes, and Civilizations*. Santa Fe NM, March 21-25, 2011.
- Betancourt, P.P. 1977. Some chronological problems in the Middle Minoan dark-on-light pottery of eastern Crete. *American Journal of Archaeology* 81: 341-353.
- Betancourt, P.P. 1979. *Vasilike Ware: an Early Bronze Age pottery style in Crete*. SIMA 56. Göteborg: Paul Åström.
- Betancourt, P.P. 1980a. *Cooking Vessels from Minoan Kommos: a preliminary report*. Institute of Archaeology, UCLA: Los Angeles. Occasional Paper 7.
- Betancourt, P.P. 1980b. LM IA pottery from Priniatikos Pyrgos. In C. Doumas (ed.) *Thera and The Aegean World I. Papers Presented at the Second International Scientific Congress, Santorini, Greece, August 1978*. London: Thera and the Aegean World. pp.381-7.
- Betancourt, P.P. 1983. *Minoan Objects Excavated from Vasilike, Pseira, Sphoungaras, Priniatikos Pyrgos, and other Sites*. University Museum Monograph 47. Philadelphia: University of Pennsylvania Museum.
- Betancourt, P.P. 1984. *East Cretan White-on-Dark Ware: studies on a handmade pottery of the Early to Middle Minoan periods*. University Museum Monograph 51. Philadelphia: University of Pennsylvania Museum.
- Betancourt, P.P. 1985 *The History of Minoan Pottery*. Princeton: Princeton University Press.
- Betancourt, P.P. 1990. *Kommos II. The Final Neolithic through Middle Minoan III Pottery*. Princeton: Princeton University Press.
- Betancourt, P.P. 1995. Other Catalogued Objects, Building AD North, in: Betancourt, P.P., Davaras, C. (eds.), Pseira I: The Minoan Buildings on the West Side of Area A, University Museum Monograph. University of Pennsylvania Museum of Archaeology and Anthropology, Philadelphia, p. 97.
- Betancourt, P.P. 2003. *Η Ελλάδα και οι γείτονές της στα Ταχυδρομικά Δελτάρια (1895-1920). Greece and Her Neighbors in Historic Postcards 1895-1920*. Athens: Potamos.
- Betancourt P.P. 2006. The Chrysokamino Metallurgy Workshop and its Territory. *Hesperia* Suppl. 36.
- Betancourt, P.P. 2008. *The Bronze Age Begins: the ceramics revolution of Early Minoan I and new forms of wealth that transformed prehistoric society*. Philadelphia: INSTAP Academic Press.
- Betancourt, P.P. 2010. The EM I pithoi from Aphrodite's Kephali. In O. Krzyszkowska (ed.) *Cretan Offerings. Studies in Honour of Peter Warren*. BSA Studies 18. London: The British School at Athens.
- Bevan, A. 2007 *Stone Vessels and Values in the Bronze Age Mediterranean*. Cambridge: Cambridge University Press.
- Bevan, A. and J. Conolly 2006. Multi-scalar Approaches to Settlement Pattern Analysis. In G. Lock and B. Molyneux (eds.) *Confronting Scale in Archaeology: issues of theory and practice*. New York: Springer. pp.217-34.
- Blackman, D. and K. Branigan 1982. The excavation of an Early Minoan tholos tomb at Ayia Kyriaki, Ayiofarango, southern Crete. *BSA* 77: 1-57.
- Boberg, A. and B. Lagerqvist 1997. *Photogrammetry in Architecture, Archaeology and Urban Conservation*. Stockholm : Swedish Society for Photogrammetry and Remote Sensing.
- Bohrer, F.N. 2011. *Photography and Archaeology*. Reaktion Books.
- Bond, G., W. Showers, M. Cheseby, R. Lotti, P. Almasi, P. deMenocal, P. Priore, H. Cullen, I. Hajdas and G. Bonani 1997. A pervasive millennial-scale cycle in North Atlantic Holocene and glacial climates. *Science* 278: 1257-66.
- Bonifay, M. 2004 *Etudes sur la céramique romaine tardive d'Afrique*. BAR International Series 1301. Oxford: Archaeopress.
- Bosanquet, R.C. 1901-1902. Excavations at Palaikastro I. *Annual of the British School at Athens* 8: 286-316.
- Bottema, S. 1980. Palynological investigations on Crete. *Review of Palaeobotany and Palynology* 31: 193-217.
- Bottema, S. and H. Woldring 1990. Anthropogenic indicators in the pollen record of the Eastern Mediterranean. In S. Bottema, G. Entjes-Nieborg and W. van Zeist (eds.) *Man's role in the shaping of the Eastern Mediterranean Landscape*. Rotterdam, Balkema. pp. 231-65.
- Bottema, S. and A. Sarpaki 2003. Environmental change in Crete: a 9000-year record of Holocene vegetation history and the effect of the Santorini Eruption. *The Holocene* 13: 733-49.
- Bourbou, C. 2010. *Health and Disease in Byzantine Crete (7th-12th Centuries AD)*. Farnham: Ashgate Publishing Limited.
- Bourdieu, P. 1977. *Outline of a Theory of Practice*. Cambridge: Cambridge University Press.
- Boyd Hawes, H., B.E. Williams, R.B. Seager and E.H. Hall 1908. *Gournia, Vasiliki and Other Prehistoric Sites on the Isthmus of Hierapetra Crete*. Philadelphia: The American Exploration Society and the Free Museum of Science and Art.

A Cretan Landscape Through Time: Priniatikos Pyrgos and Environs

- Branigan, K. 1968. Copper and bronze working in Early Bronze Age Crete. *SIMA* 19. Lund: Paul Åströms Förlag.
- Branigan, K. 1974. *Aegean metalwork of the Early and Middle Bronze Age*. Oxford: Clarendon Press.
- Branigan, K. 1983. Craft specialization in Minoan Crete. In O. Krzyskowska and L. Nixon (eds.) *Minoan Society. Proceedings of the Cambridge Colloquium 1981*. Bristol Classical Press. pp.23-32.
- Branigan, K. 1991. Mochlos – an early Aegean ‘gateway community’? In R. Laffineur and L. Basch (eds.) *Thalassa: L’Egée préhistorique et la mer*. Aegaeum 7. Liège: Université de Liège.
- Branigan, K. 1998. Prehistoric and early historic settlement in the Ziros region, Eastern Crete. *BSA* 93: 23-90.
- Brett, G., W.J. Macaulay and R.B.K. Stevenson 1947. *The Great Palace of the Byzantine Emperors*. Oxford: Oxford University Press.
- Briault, C. 2007. Making mountains out of molehills in the Bronze Age Aegean: visibility, ritual kits, and the idea of a peak sanctuary. *World Archaeology* 39 (1): 122-41.
- Brogan, T., A. Smith, and J. Soles 2002. Mycenaean at Mochlos? Exploring culture and identity in the Late Minoan IB to IIIA1 transition. *Aegean Archaeology* 6: 89-118.
- Bruins, H.J., J.A. MacGillivray, C.E. Synolakis, C. Benjamini, J. Keller, H.J. Kisch, A. Klügel and J. van der Plicht 2008. Geoarchaeological tsunami deposits at Palaikastro (Crete) and the Late Minoan IA eruption of Santorini. *Journal of Archaeological Science* 35: 191-212.
- Buechner, T.S. 1960. The glass from Tarrha. *Hesperia* XXIX (1): 109-17.
- Buikstra, J.E. & D.H. Ubelaker (eds.) 1994. *Standards for Data Collection from Human Skeletal Remains*. Arkansas Archaeological Survey Research Series 44. Fayetteville (ARK): Arkansas Archeological Survey.
- Caputo, M., G.F. Panza and D. Postpischl 1970. Deep structure of the Mediterranean Basin. *J. Geophys. Res.* 75: 4919-23.
- Carter, T. 2004. Mochlos and Melos: a special relationship? Creating identity and status in Minoan Crete. In L.P. Day, M.S. Mook and J.D. Muhly (eds.) *Crete Beyond the Palaces: proceedings of the Crete 2000 conference*. Prehistory Monographs 10. Philadelphia: INSTAP Academic Press. pp.291-307.
- Carter, T. 2008. The consumption of obsidian in the Early Bronze Age Cyclades. In N. Brodie, J. Doole, G. Gavalas, and C. Renfrew (eds.) *Horizon: a colloquium on the prehistory of the Cyclades*. Cambridge: Macdonald Institute for Archaeological Research Monographs. pp.225-35.
- Carter, T. 2010. Of blades and burials, flakes and funerals: the chipped stone from Moni Odigitria. In K. Branigan and A. Vasilakis (eds.) *Moni Odigitria: A Prepalatial Cemetery and its Environs in the Asterousia, Southern Crete*. Philadelphia: INSTAP Academic Press. pp.151-69.
- Carter, T. 2012. Crete and the Cyclades in the Early Bronze Age: a view from Priniatikos Pyrgos. Presentation at *Fieldwork and research at Priniatikos Pyrgos and environs: 1912-2012*. Conference held at the British School at Athens, June 1st and 2nd 2012.
- Carter, T. and V. Kilikoglou 2007. From reactor to royalty? Aegean and Anatolian obsidians from Quartier Mu, Malia (Crete). *Journal of Mediterranean Archaeology* 20: 1-29.
- Catapotis, M. and Y. Bassiakos 2007. Copper Smelting at the Early Minoan Site at Chrysokamino on Crete. In P.M. Day and R.C.P. Doonan (eds.) *Metallurgy in the Early Bronze Age Aegean*. Oxford: Oxbow. pp.68-83.
- Catapotis M., Y. Bassiakos and Y. Papadatos 2011. Reconstructing early Cretan metallurgy: analytical evidence from Kephala Petras, Siteia. In P.P. Betancourt and S. Ferrence (eds.) *Metallurgy: Understanding How, Learning Why*. Studies in Honor of James D. Muhly. Philadelphia. pp.69-77.
- Catling, H.W., D. Smyth, J.H. Musgrave and Glynis Jones 1976. An Early Christian osteotheke at Knossos. *The Annual of the British School at Athens* I: 25-47.
- Chapman, J. 2000. *Fragmentation in Archaeology: people, places and broken objects in the prehistory of South Eastern Europe*. London: Routledge.
- Christakis 2005. *Cretan Bronze Age Pithoi: traditions and trends in the production and consumption of storage containers in Bronze Age Crete*. Philadelphia: INSTAP Academic Press.
- Chrysoulakis, N., M. Abrams, H. Feidas and D. Velianitis 2004. Analysis of ASTER multispectral stereo imagery to produce DEM and land cover databases for the Greek islands: the REALDEMS project. In P. Prastacos, U.Cortes, J. Diaz de Leon and M. Murillo (eds.) *EARSeL Workshop on Remote Sensing for Developing Countries*. Mexico City: Instituto Politécnico Nacional. pp.404-17.
- Clark, P. and F. Evans 1954. Distance to nearest neighbour as a measure of spatial relationships in populations. *Ecology* 35: 445-53.
- Cominakis, P. E. and B.C. Papazachos 1980. Space and time distribution of the intermediate focal depth earthquakes in the Hellenic arc. *Tectonophysics* 70: 35-47.
- Conlon, V.M. 1973. *Camera Techniques in Archaeology*. London: John Baker.
- Conolly, J. and M. Lake 2006. *Geographical Information Systems in Archaeology*. Cambridge: Cambridge University Press.
- Constantinides, I., A. Adriaens and F. Adams 2002. Surface characterisation of artificial corrosion layers on copper alloy reference materials. *Applied Surface Science* 189: 90-101.
- Cookson, M.B. 1954. *Photography for Archaeologists*. London: Max Parrish.

Bibliography

- Crowfoot, G.M. and D.B. Harden 1931. Early Byzantine and later glass lamps. *The Journal of Egyptian Archaeology* XVII: 196-205.
- D'Annibale, C. 2008. Obsidian in transition: the technological reorganization of the obsidian industry from Petras Kephala (Siteia) between Final Neolithic IV and Early Minoan I. In V. Isaakidou and P. Tomkins (eds.) *Escaping the Labyrinth: the Cretan Neolithic in context*. Sheffield Studies in Aegean Archaeology 8. Oxford: Oxbow. pp.191-200.
- Dalfes, H.N., G. Kukla and H. Weiss (eds.) 1997. *Third Millennium B.C. Climate Change and Old World Collapse*. Berlin: Springer Verlag.
- Davaras, C. 1975. Κεραμική κάμινος εις Ἴστρωνά Ανατολικῆς Κρήτης. *Archaiologikon Deltion* 28: 110-15.
- Davaras, C. and P.P Betancourt 2012. *The Hagia Photia Cemetery II: the pottery*. Philadelphia: INSTAP Academic Press.
- Davidson Weinberg, G.D. 1959. Excavations at Tarrha. *Hesperia* XXIX (1): 90-108.
- Dawkins, R.M. 1903. Pottery from Zakros. *Journal of Hellenic Studies* 23: 248-60.
- Day, P.M. 1991. *A Petrographic Approach to Pottery in Neopalatial East Crete*. Unpublished PhD. Thesis. University of Cambridge.
- Day, P.M. 1995. Pottery production and consumption in the Siteia Bay area during the New Palace period. In M. Tsipopoulou and L. Vagnetti (eds.) *Achladia: Scavi e Ricerche della Missione Greco-Italiana in Creta Orientale (1991-1993)*. Rome: Gruppo editoriale internazionale. pp. 149-73.
- Day, P.M., E. Kiriati, A. Tsolakidou and V. Kilikoglou 1999. Group therapy in Crete: a comparison of analyses by NAA and thin section petrography of Early Minoan pottery. *Journal of Archaeological Science* 26:1025-36.
- Day, P.M., L. Joyner and M. Relaki 2003. A petrographical analysis of the Neopalatial pottery. In K. Barnard and T. Brogan (eds.) *Mochlos IB: Period III. Neopalatial Settlement on the Coast: the Artisan's Quarter and the Farmhouse at Chalinomouri. The Neopalatial pottery*. Philadelphia: INSTAP Academic Press. pp.13-32.
- Day, P.M., L. Joyner, E. Kiriati, and M. Relaki 2005. Petrographic analysis of some Final Neolithic-Early Minoan II pottery from the Kavousi Area. In D. Haggis (ed.) *Kavousi I. The Archaeological Survey of the Kavousi Region*. Philadelphia: INSTAP Academic Press. pp.177-95.
- Day, P.M, V. Kilikoglou, L. Joyner, and G.C. Gesell 2006. Goddesses, snake tubes, and plaques: analysis of ceramic ritual objects from the LM IIIC shrine at Kavousi. *Hesperia* 75: 137-75.
- De Mot, J. 1904. Vases Égéens en Forme d'Animaux. *Revue Archéologique* 4: 201-24.
- Delougaz, P. and R.C. Haines 1960. *A Byzantine church at Khirbat al-Karnak*. The University of Chicago Oriental Institute Publications LXXXV. Chicago, Illinois: University of Chicago Press.
- Demesticha, S. 2003. Amphora production on Cyprus during the Late Roman period. In Ch. Bakirtzis (ed.) *VIIe Congrès International sur la Céramique Médiévale en Méditerranée*. Actes de VIIe Congrès International sur la Céramique Médiévale en Méditerranée, Thessaloniki, 11-16 October 1999. Athènes: Caisse des Recettes Archéologiques. pp. 469-76.
- Di Vita, A. 1979-80. I terremoti a Gortina in età romana e protobizantina, una nota. *Annuario della Scuola Archeologica di Atene* XLI – XLII: 434-40.
- Di Vita, A. 1988. *Gortina I*. Monografie della Scuola Archeologica di Atene e delle Missioni Italiane in Oriente III. Rome: L' Erma di Bretschneider.
- Di Vita, A. 2000. *Gortina V. Lo scavo del Pretorio (1989 – 1995)*. Monografie della Scuola Archeologica Italiana di Atene XII. Padua: Aido Ausilio Editore.
- Di Vita, A., V. La Rosa and M.A. Rizzo 1984. *Creta Antica: Cento anni di archeologia italiana (1884-1984)*. Rome: Libreria dello Stato.
- Dickinson, O.T.P.K. 1994. *The Aegean Bronze Age*. Cambridge: Cambridge University Press.
- Dierckx, H.M.C. and B. Tsikouras 2007. Petrographic characterization of rocks from the Mirabello Bay Region, Crete, and its application to Minoan archaeology: the provenance of stone implements from Minoan sites. *Bulletin of the Geological Society of Greece* 40. *Proceedings of the 11th International Congress, Athens, May 2007*. Athens: 1768–79.
- Doonan, R., P. Day, and N. Dimopoulou-Rethiomataki 2007. Lame excuses for emerging complexity in Early Bronze Age Crete: the metallurgical finds from Poros-Katsambas and their context. In P. Day and R. Doonan (eds.) *Metallurgy in the Early Bronze Age Aegean*. Sheffield Studies in Aegean Archaeology 7. Oxford: Oxbow. pp. 98–122.
- Dormoy, I., O. Peyron, N. Combourieu-Neboutb, S. Goring, U. Kotthoff, M. Magny and J. Pross 2009. Terrestrial climate variability and seasonality changes in the Mediterranean region between 15000 and 4000 years BP deduced from marine pollen records. *Climate of the Past Discussion* 5: 735-70.
- Dorrell, P.G. 1994. *Photography in Archaeology and Conservation*. Cambridge: Cambridge University Press.
- Doumas, C. 2010. Crete and Cyclades in the Early Bronze Age: a view from the north. In O. Krzyszkowska (ed.) *Cretan Offerings: Studies in Honour of Peter Warren*. BSA Studies 18. London: British School at Athens. pp. 101-5.
- Driessen, J. and C.F. Macdonald 1997. *The troubled island: Minoan Crete before and after the Santorini eruption*. Aegaeum. Liège: Université de Liège, Histoire de l'art et archéologie de la Grèce antique.

A Cretan Landscape Through Time: Priniatikos Pyrgos and Environs

- Driessen, J. and J.A. MacGillivray 2011. Swept away in LM IA? Explaining debris deposition in coastal Neopalatial Crete. *Proceedings of the 10th International Cretological Congress*. Chania, 1-8th October 2006. Rethymno: Filologikos Syllogos "O Xrysostomos". pp. 259-70.
- Druitt, T.H., L. Edwards, R.M. Mellors, D.M. Pyle, R.S.J. Sparks, M. Lamphere, M. Davies and B. Barriero 1999. *Santorini Volcano*. London: Geological Society Memoir 19.
- Duday, H. 2006. L'archaeoethnologie ou l'archeologie de la mort (Archaeoethnology or the Archaeology of Death). In R. Gowland and C. Knusel (eds.) *Social Archaeology of Funerary Remains*. Oxford: Oxbow. pp.30-56.
- Ebersolt, J. 1910. *Catalogue des poteries byzantines et anatoliennes du Musée de Constantinople*. İstanbul Arkeoloji Müzeleri. İstanbul: Ahmed Ihsan.
- Eiring, J., G. Finkielsztejn, M.L. Lawall, and J. Lund 2004. Concluding Remarks. In J. Eiring and J. Lund (eds.) *Transport Amphorae and Trade in the Eastern Mediterranean*. Acts of the International Colloquium at the Danish Institute at Athens September 26-29, 2002. Monographs of the Danish Institute at Athens. Volume 5. Aarhus :Aarhus University Press. pp.459-66.
- Eiteljorg, H. II 2004. Computing for archaeologists. In S. Schreibman, R. G. Siemens and J. Unsworth (eds.) *A Companion to Digital Humanities*. Blackwell Companions to Literature and Culture. Malden, MA: Blackwell Pub. pp.20-30.
- Ercek, R., D. Viviers and N. Warzée 2010. 3D reconstruction and digitalization of an archaeological site, Itanos, Crete. *Virtual Archaeology Review* 1 (1): 81-5.
- Erickson, B.L. 2010. Priniatikos Pyrgos and the Classical period in eastern Crete: Feasting and island identities. *Hesperia* 79: 305-49.
- Evans, A.J. 1921–1935. *The Palace of Minos at Knossos*. London: Macmillan and Co.
- Flemming, N.C. 1978. Holocene eustatic changes and coastal tectonics in the Northeast Mediterranean: implications for models of crustal consumption. *Philosophical Transactions of the Royal Society of London*. A289: 405-58.
- Folk, R.L. 1966. A review of the grain size parameters. *Sedimentology* 26: 73-93.
- Fotou, V. and A. Brown 2004. Harriet Boyd Hawes. In G.M. Cohen and M.S. Joukowsky (eds.) *Breaking Ground. Pioneering Women Archaeologists*. Michigan: The University of Michigan Press. pp.198-273.
- Fouache, E., S. Dersuelles, K. Pavlopoulos, R. Dalongeville, Y. Coquinot, J. Peulvast and J.-L. Potdevin 2005. Using beachrocks as sea level indicators in the insular group of Mykonos, Delos and Rhenia (Cyclades, Greece). *Annals of Geomorphology Sup. Vol 137*: 37-43.
- Frahm, E. 2013a. Validity of 'off-the-shelf' handheld portable XRF for sourcing Near Eastern obsidian chip debris. *Journal of Archaeological Science* 40: 1080-92.
- Frahm, E. 2013b. Is obsidian sourcing about geochemistry or archaeology? A reply to Speakman and Shackley. *Journal of Archaeological Science* 40: 1444-8.
- Frahm, E. and R. Doonan 2013. The technological versus methodological revolution of portable XRF in Archaeology. *Journal of Archaeological Science* 40: 1425-34.
- Frahm, E., R. Doonan and V. Kilikoglou 2013. Handheld portable X-ray fluorescence of Aegean obsidians. *Archaeometry*. doi: 10.1111/arc.12012.
- Friend, W.H.C. and D.E. Johnston 1962. The Byzantine basilica church at Knossos. *The Annual of the British School at Athens* DVII. pp.186-238.
- Freund, K.P. 2013. An assessment of the current applications and future directions of obsidian sourcing studies in Archaeological research. *Archaeometry* doi: 10.1111/j.1475-4754.2012.00708.
- Friedman, G. 1961. Distinction between dune, beach and river sands from their textural characteristics. *Journal of Sedimentary Petrology* 31: 514-29.
- Fryer, J., H. Mitchell and J.H. Chandler 2007. *Applications of 3D Measurement from Images*. Dunbeath: Whittles Publishing.
- Gadamer, H.G. 1989. *Truth and Method*. Second Revised Edition. New York: Crossroad.
- Galanaki, K. 2006. Προτομινωικό ταφικό σύνολο στην πρώην Αμερικανική Βάση Γουρνών Πεδιάδος. In *Proceedings of the 9th (Θ') International Cretological Conference*, vol. A2: 227–242. Heraklion: Εταιρία Κρητικών Ιστορικών Μελετών.
- Geraga, M., S. Tsaila-Monopolis, C. Ioakim, G. Papatheodorou and G. Ferentinos 2000. Evaluation of palaeoenvironmental changes during the last 18,000 years in the Myrtoon basin, SW Aegean Sea. *Palaeogeography, Palaeoclimatology, Palaeoecology* 156: 1-17.
- Geraga, M., S. Tsaila-Monopolis, C. Ioakim, G. Papatheodorou and G. Ferentinos 2005. Short-term climate changes in the southern Aegean Sea over the last 48,000 years. *Palaeogeography, Palaeoclimatology, Palaeoecology* 220: 311-32.
- Geraga, M., C. Ioakim, V. Lykousis, S. Tsaila-Monopolis and G. Mylona 2010. The high-resolution palaeoclimatic and palaeoceanographic history of the last 24,000 years in the central Aegean Sea, Greece. *Palaeogeography, Palaeoclimatology, Palaeoecology* 287: 101-115.
- Gere, C. 2009. *Knossos and the Prophets of Modernism*. London: University Of Chicago Press.
- Gesell, G.C. 1985. *Town, Palace, and House Cult in Minoan Crete*. Göteborg: Paul Åströms Förlag.
- Ghilardi M., D. Psomiadis, F. Longo, V. Amato, A. Rossi, F. Demory, D. Delanghe-Sabatier, M. Colletu, L. Sinibaldi, N. Carayon and F. Gasse 2012. Palaeoenvironmental

Bibliography

- investigations in the vicinity of Ancient Phaistos (Crete, Greece): preliminary results. *European Geologic Union Assembly, 22-27 April 2012, Vienna, Austria. GM 4.7. session : Late Quaternary environments and societies: progress in geoarchaeology*. Poster.
- Gibbons, H. A. 1920. *Venizelos*. Boston and New York: Houton Mifflin.
- Giresse, P., R. Buscaïl and B. Charrière 2003. Late Holocene multisource material input into the Aegean Sea: depositional and post-depositional processes. *Oceanologica Acta* 26: 657-72.
- Glassie, H. 1998 *Material Culture*. Indianapolis: Indiana University Press.
- Golitko, M., J. Meierhoff and J. Terrell 2010. Chemical characterization of sources of obsidian from the Sepik coast (PNG). *Archaeology in Oceania* 45: 120-29.
- Gregersen, S. and W. Jaeger 1984. The gravity field of a dipping plate in Greece. *Geophys. J. R. Astron. Soc.* 76: 439-43.
- Griggs, C., A. DeGaetano, P. Kuniholm and M. Newton 2007. A regional high-frequency reconstruction of May-June precipitation in the north Aegean from oak tree rings, A.D. 1089–1989. *International Journal of Climatology* 27: 1075-89.
- Grinsell, L.V. 1961. The breaking of objects as a funerary rite. *Folklore* 72: 475-91.
- Grove, J.M. 2004. *Little Ice Ages: Ancient and Modern*. London: Routledge.
- Grove, A.T. and O. Rackham 2001. *The Nature of Mediterranean Europe: An Ecological History*. New Haven: Yale University Press.
- Haggis, D. 1996. Excavations at Kalo Khorio, East Crete. *AJA* 100: 645-81.
- Haggis, D. 1997. The typology of the Early Minoan I chalice and the cultural implications of form and style in Early Bronze Age ceramics. In R. Laffineur and P.P. Betancourt (eds.) *TEXNH: Craftsmen, Craftswomen and Craftsmanship in the Aegean Bronze Age*. Aegaeum 16. Liège: Université de Liège. pp. 291-99.
- Haggis, D. 2005. *Kavousi I: the archaeological survey of the Kavousi region*. Philadelphia: INSTAP Academic Press.
- Haggis, D. 2012. An Early Minoan I long dagger and razor from Kalo Chorio, East Crete. In E. Mantzourani and P.P. Betancourt (eds.) *Philistor: Studies in honor of Costis Davaras*. Philadelphia: INSTAP Academic Press. pp.51-58.
- Haggis, D., and M. Mook 1993. The Kavousi coarse wares: a Bronze Age chronology for survey in the Mirabello area, East Crete. *AJA* 97: 265–93.
- Haggis, D., J.T. Ammons, P.M. Day, J.E. Foss, L. Joyner, E. Kiriati, M.S. Mook, M.W. Morris, M. Relaki and M.E. Timpson 2005. *Kavousi I: The archaeological survey of the Kavousi region*. Prehistory Monographs 16. Philadelphia: INSTAP Academic Press.
- Hahn, M. 2005. Byzantine-Modern Pottery Catalogue. In B.J. Hayden (ed.) *Reports on the Vrokastro Area, Eastern Crete. Volume 3. The Vrokastro Regional Survey Project Sites and Pottery*. Philadelphia: University of Pennsylvania Museum of Archaeology and Anthropology. pp.125-50. [CD].
- Hall, E.H. 1912. *Excavations in Eastern Crete: Sphoungaras*. University of Pennsylvania, the Museum Anthropological Publications vol. III, no. 2. Philadelphia: the Free Museum of Science and Art.
- Hall, E.H. 1914. *Excavations in Eastern Crete: Vrokastro*. University of Pennsylvania, the Museum Anthropological Publications vol. III, no. 3. Philadelphia: the Free Museum of Science and Art.
- Hallager, E. and B.P. Hallager (eds.) 1997. *The Greek Swedish Excavations at Agia Aikaterini Square Kastelli, Khania 1970-1987. Volume I. From Geometric to the Modern Greek Period*. Acta Instituti Atheniensis Regni Sueciae Series 47. Stockholm: Svenska Institutet i Athen.
- Hamilakis, Y. and N. Momigliano (Eds) 2006. *Archaeology and European modernity: producing and consuming the "Minoans"*. Bottega d'Erasmus.
- Han, J., M. Kamber and J. Pei 2006. *Data Mining: Concepts and Techniques*. Second Edition. Morgan Kaufmann.
- Harp, E. 1975. *Photography in Archaeological Research*. Albuquerque: University of New Mexico Press.
- Harrison, G.W.M. and B.J. Hayden 2005. Roman pottery summary. In B.J. Hayden (ed.) *The Vrokastro Regional Survey Project Sites and Pottery: reports on the Vrokastro area, eastern Crete, Volume 3*. Pennsylvania: University of Pennsylvania Press.
- Hassan, R. 2008. *The Information Society: Cyber Dreams and Digital Nightmares*. Polity Press.
- Hayden, B.J. 1995. Rural settlement of the Orientalizing through early Classical period: the Meseleroi valley, eastern Crete. *Aegean Archaeology* 2: 93-144.
- Hayden B.J. 1999. The Coastal Settlement of Priniatikos Pyrgos: archaeological evidence, topography and environment. In P.P. Betancourt, V. Karageorghis, R. Laffineur and W.-D. Niemeier (eds.) *Meletemata II*. Aegaeum 20. Liège: Université de Liège, Histoire de l'art et archéologie de la Grèce antique. pp.352-55.
- Hayden, B.J. 2000a. Priniatikos Pyrgos. In J.D. Muhly and E. Sikla (eds.) *Crete 2000. One Hundred Years of American Archaeological Work on Crete*. Athens: American School of Classical Studies at Athens. pp.147-52.
- Hayden, B.J. 2000b. Vrokastro. In J.D. Muhly and E. Sikla (eds.) *Crete 2000. One Hundred Years of American*

A Cretan Landscape Through Time: Priniatikos Pyrgos and Environs

- Archaeological Work on Crete*. Athens: American School of Classical Studies at Athens. pp.136-145.
- Hayden, B.J. 2003. Final Neolithic–Early Minoan I/IIA settlement in the Vrokastro area, Eastern Crete. *American Journal of Archaeology* 107: 363-412.
- Hayden, B.J. 2004. *Reports on the Vrokastro Area, Eastern Crete. Volume 2. The Settlement History of the Vrokastro Area and Related Studies*. Philadelphia: University of Pennsylvania Museum of Archaeology and Anthropology.
- Hayden, B.J., J. Moody and O. Rackham 1992. The Vrokastro Survey Project, 1986-1989: research design and preliminary results. *Hesperia* 61(3): 293-353.
- Hayden, B.J., H. Dierckx, G.W.M. Harrison, J. Moody, G. Postma, O. Rackham and A.B. Stallsmith 2004. *Reports on the Vrokastro Area, Eastern Crete 2: The Settlement History of the Vrokastro Area and Related Studies*. University Museum Monograph 119. Philadelphia: University of Pennsylvania Museum.
- Hayden, B.J., M. Hahn, G.W.M. Harrison, J. Moody, O. Rackham, M. Risser and A.B. Stallsmith 2005. *Reports on the Vrokastro Area, Eastern Crete 3: the regional survey project, sites and pottery*. University Museum Monograph 123. Philadelphia: University of Pennsylvania Museum.
- Hayden, B.J. and M. Risser 2005. Early Iron Age-Hellenistic pottery catalogue. In B.J. Hayden (ed.) *Reports on the Vrokastro Area, Eastern Crete. Volume 3: The Vrokastro Regional Survey Project Sites and Pottery*. Philadelphia: University of Pennsylvania Museum of Archaeology and Anthropology. pp.51-90. [CD].
- Hayden, B., Y. Bassiakos, Th. Kalpaxis, A. Sarris and M. Tsipopoulou 2007. A new exploration of Priniatikos Pyrgos: primary harbor settlement and emporium of the Vrokastro Survey Region. In P.P. Betancourt, M.C. Nelson and H. Williams (eds.) *Krinoi kai Limenes: studies in honor of Joseph and Maria Shaw*. Philadelphia: INSTAP Academic Press. pp.93-100.
- Hayden, B.J., and M. Tsipopoulou 2012. The Priniatikos Pyrgos project. Preliminary report on the rescue excavation of 2005–2006. *Hesperia* 81:506-84.
- Hayes, J.W. 1972. *Late Roman Pottery. A Catalogue of Roman Fine Wares*. London: The British School at Rome.
- Hayes, J.W. 1992. *Excavation at Sarachane in Istanbul. The Pottery*. New Jersey: Princeton University Press.
- Hayes, J.W. 2001. Early Christian pottery from Knossos: the 1978-1981 finds from the Knossos medical faculty site. *Annual of the British School at Athens* 95: 431-54.
- Hazan, N., M. Stein, A. Agnon, S. Marco, D. Nadel, J.F.W. Negendank, M. Schwab and D. Neev 2005. The late Pleistocene–Holocene limnological history of Lake Kinneret (Sea of Galilee), Israel. *Quaternary Research* 63: 60-77.
- Henderson, J. 2000. *The Science and Archaeology of Materials*. London: Routledge.
- Hibbert, C. 1975. *The Illustrated London News: Social History of Victorian Britain*. Angus & Robertson.
- Higgins, R.A. 1973. The terracottas. In J.N. Coldstream (ed.) *Knossos. The sanctuary of Demeter*. British School at Athens Supplement 8. London: British School at Athens. pp.56-92.
- Higgins, R.A. 2001. *Minoan and Mycenaean Art*. New revised edition. London: Thames and Hudson.
- Hiller, S. 2001. Potnia/Potnios Aigon: on the religious aspects of goats in the Aegean Late Bronze Age. In R. Laffineur and R. Hägg (eds.) *Potnia: Deities and Religion in the Aegean Bronze Age*. Aegaeum 22. Liège: Université de Liège. pp.293-304.
- Hodder, I. 1995. *Interpreting Archaeology: Finding Meaning in the Past*. London: Routledge.
- Hodder, I. et al. (eds.) 1995. *Interpreting Archaeology: Finding Meaning in the Past*. London: Routledge.
- Hodder, I. 1999. *The Archaeological Process: an introduction*. Oxford: Blackwell.
- Hodder, I. and S. Hutson 2003. *Reading the Past*. Third Edition. Cambridge: Cambridge University Press.
- Hogarth, D.G. 1899–1900. The Dictaeon Cave. *Annual of the British School at Athens* 6: 94–116.
- Hogarth, D.G. 1900-1901. Excavations at Zakros, Crete. *Annual of the British School at Athens* 7: 121-49.
- Honigman, B. 2012. 100 fascinating social media statistics and figures from 2012 *Huffington Post*. Available at: http://www.huffingtonpost.com/brian-honigman/100-fascinating-social-me_b_2185281.html [Accessed January 14, 2013].
- Hood, S. and G. Cadogan 2011. *Knossos Excavations 1957-1961: Early Minoan*. BSA Supplementary Volume 46. London: British School at Athens.
- Hough, R., C. Butt and J. Fischer-Bühner 2009. The crystallography, metallography, and composition of gold. *Elements* 5: 297-302.
- Howell, C.L. and W. Blanc 1992. *A Practical Guide to Archaeological Photography*. Los Angeles: University of California at Los Angeles.
- Hughes, M., P.I. Kuniholm, J.C. Eiseid, G. Garfin, C. Griggs and C. Latini 2001. Aegean tree-ring signature years explained. *Tree-ring Research* 57 (1): 67-73.
- Hurwit, J.M. 1987. *The Art and Culture of Early Greece, 1100-480 B.C*. Ithaca: Cornell University Press.
- I.G.M.E. 1981. *Geological Map of Greece*. Aghios Nikolaos sheet. Athens: Institute of Geology and Mineral Exploration.
- I.G.M.E. 1984. *Geological Map of Greece: 1:50 000*. Timbakion sheet. Athens: Institute of Geology and Mineral Exploration.

Bibliography

- I.G.S.R. 1959. *Geological Map of Greece*: 1:50 000. Kato Chorion (Ierapetra) sheet. Athens: Institute for Geology and Subsurface Research.
- Isings, C. 1957. *Roman Glass from Dated Finds*. Archaeologica Traiectina Edit AB, Academie Rheno-Traiectinae Instituto Archaeologico II. Groningen: J.B. Wolters.
- Ivy-Ochs, S., H. Kerschner, M. Maisch, M. Christl, P.W. Kubik and C. Schlüchter 2009. Latest Pleistocene and Holocene glacier variations in the European Alps. *Quaternary Science Reviews* 28: 2137-49.
- Jennings, S. 2004-2005. *Vessel Glass from Beirut: BEY 006,007, and 045*. Berytus Archaeological Studies XLVIII-XLIX. Beirut: The American University of Beirut.
- Joerin, U.E., K. Nicolussi, A. Fischer, T.F. Stocker and C. Schlüchter 2008. Holocene optimum events inferred from subglacial sediments at Tschierwa Glacier, Eastern Swiss Alps. *Quaternary Science Reviews* 27: 337-350.
- Jones, D.W. 1999. *Peak Sanctuaries and Sacred Caves in Minoan Crete: a comparison of artifacts*. Jonsered: Paul Åströms Förlag.
- Jones, M.C., C.N. Roberts, M.J. Leng and M. Türkeş 2006. A high-resolution late Holocene lake isotope record from Turkey and links to North Atlantic and monsoon climate. *Geology* 34 (5): 361-4.
- Kalpaxis, T., K. Athanassas, I. Bassiakos, T. Brennan, B. Hayden, E. Nodarou, K. Pavlopoulos, and A. Sarris 2006. Preliminary results of the Istron, Mirabello, geophysical and geoarchaeological project 2002–2004. *BSA* 101:135-81.
- Kalpaxis, T., N. Poulou, A.G. Yiangaki, M. Xanthopoulou, L. Mantalara and D. Milona 2008. *Ελεύθερνα. Τομέας II. 3. Βυζαντινό σπίτι Αγία Άννα*. Εκδόσεις πανεπιστημίου Κρήτης. Rethymno.
- Kansa, S.W. and E.C. Kansa 2007. Open content in open context. *Education Technology* XLVII (6): 26-31.
- Kansa, S.W. and F. Deblauwe 2011. User-generated content in zooarchaeology: exploring the “middle space” of scholarly communication. In E. C. Kansa, S.W. Kansa and E. Watrall (eds.) *Archaeology 2.0: New Approaches to Communication and Collaboration*. Cotsen Digital Archaeology series. Los Angeles: Cotsen Institute of Archaeology University of California. pp.185-206.
- Kansa, E.C., S.W. Kansa and E. Watrall (eds.) 2011. *Archaeology 2.0: new approaches to communication and collaboration*. Los Angeles: Cotsen Institute of Archaeology, University of California.
- Kantor, H. 1947. The Aegean and the Orient in the Second Millennium B. C. *American Journal of Archaeology* 51 (1): 1-103.
- Karotsieris, Z., S. Lozios and M. Dermitzakis 2000. The neotectonic structure of Ierapetra-Ag.Nikolaos region (Lasithi, Crete). *Annales Geologiques des pays Helleniques* XXXVIII. Fasc.C: 77-115.
- Katsianis, M., S. Tsipidis, K. Kotsakis and A. Kousoulakou 2008. A 3D digital workflow for archaeological intra-site research using GIS. *Journal of Archaeological Science* 35: 655-67.
- Klontza-Jaklova, V. [forthcoming]. History hidden in broken pots or broken pots hidden in history? The Late Roman – Early Byzantine stratigraphy at Priniatikos Pyrgos. *Acta of 28th Congress of the Rei Cretariae Romanae Fautores. From broken pottery to lost identity in Roman times*. Catania, Italy 23-30 September 2012.
- Klontza-Jaklova, V. [in press a]. Transport and storage pottery from Priniatikos Pyrgos. Preliminary Study. *Proceedings of 4th Conference on Late Roman Coarse Wares, Cooking Wares and Amphorae*. Thessaloniki, 7-10 April 2011.
- Klontza-Jaklova, V. [in press b]. Specifics of Aegean Byzantine Amphorae Studies: the example of Priniatikos Pyrgos, East Crete. *Studia Minora Phacultatis Philosophicae Universitatis Brunensis. Series Archaeologica*.
- Koehl, R.B. 2006. *Aegean Bronze Age Rhyta*. Prehistory Monographs 19. Philadelphia: INSTAP Academic Press.
- Koh, A. and P.P. Betancourt 2010. Wine and olive oil from an Early Minoan I hilltop fort. *Mediterranean Archaeology and Archaeometry* 10.2:15-23.
- Kopaka, K. and Ch. Matzanas 2009. Paleolithic industries from the island of Gavdos, near neighbor to Crete in Greece. *Antiquity (project gallery)* 83: 321. <http://antiquity.ac.uk/antiquityNew/projgall/kopaka321/index.html>.
- Köse, N., U. Akkemik, H.T. Güner, H.N. Dalfes. H.D. Grissino-Mayer, M. Sinan Özeren and T. Kindap 2013. An improved reconstruction of May–June precipitation using tree-ring data from western Turkey and its links to volcanic eruptions. *International Journal of Biometeorology* 57 (5): 691-701.
- Koutavas, A. and S. Joanides 2012. El Niño Southern Oscillation extrema in the Holocene and Last Glacial Maximum. *Paleoceanography* 27. PA4208,doi:10.1029/2012PA002378.
- Kraus, K. 2007. *Photogrammetry: geometry from images and laser scans*. Volume 1. Berlin: De Gruyter.
- Kuniholm, P.I., B. Kromer, S.W. Manning, M. Newton, C.E. Latini and M.J. Bruce 1996. Anatolian tree rings and the absolute chronology of the eastern Mediterranean, 2220–718 BC. *Nature* 381: 780-83.
- Kuzucuoğlu, C., W. Walter Dörfler, S. Kunesch and F. Goupille 2011. Mid- to late-Holocene climate change in central Turkey: The Tecer Lake record. *The Holocene* 21 (1): 173-88.
- L-P Archaeology, 2008. Prescott Dig. *L - P Archaeology*. Available at: <http://www.lparchaeology.com/prescot/> [Accessed April 30, 2012].

A Cretan Landscape Through Time: Priniatikos Pyrgos and Environs

- Lagia, A., E. Petroutsas and S.K. Manolis 2006. Demographic and paleopathologic analysis of an Early Christian era population from the Kos island (Aegean Archipelago, Greece). *16th Paleopathology Association European Meeting*. August 28 - September 1, 2006, Santorini, Greece.
- Lamb, H.H. 1997. *Climate, History and the Modern World*. London: Routledge.
- Lambeck, K. 1995. Late Pleistocene and Holocene sea-level change in Greece and south-western Turkey: a separation of eustatic, isostatic and tectonic contributions. *Geophysics Journal International* 122: 1022-44.
- Lambeck, K. 1996. Sea-level change and shore-line evolution in Aegean Greece since Upper Paleolithic time. *Antiquity* 70: 588-610.
- Lambeck, K. and A. Purcell 2005. Sea-level change in the Mediterranean Sea since the LGM: model predictions for tectonically stable areas. *Quaternary Science Reviews* 24: 1969-88.
- Langosch, A., E. Seidel, H.-G. Stosch and M. Okrusch 2000. Intrusive rocks in the ophiolitic mélange of Crete – witnesses to a Late Cretaceous thermal event of enigmatic geological position. *Contributions to Mineralogy and Petrology* 139: 339-55.
- Lazor P., O.N. Shebanova and H. Annersten 2004. High pressure study of stability of magnetite by thermodynamic analysis and synchrotron X-ray diffraction. *Journal of Geophysical Research* 109: B05201.
- Liritzis, I. 2008. Assessment of Aegean obsidian sources by a portable ED-XRF analyser: grouping, provenance and accuracy. In Y. Facorellis, N. Zacharias and K. Polikreti (eds.) *Proceedings of the 4th Symposium of the Hellenic Society for Archaeometry, National Hellenic Research Foundation, Athens, 28-31 May 2003*. Oxford: BAR International Series 1746. Oxford: Archaeopress. pp.399-406.
- Liritzis, I. and N. Zacharias 2010. Portable XRF of archaeological artifacts: current research, potentials and limitations. In M.S. Shackley (ed.) *X-ray Fluorescence Spectrometry (XRF) in Geoarchaeology*. Springer. pp.109-42.
- Lohr, S. 2012. Big Data's Impact in the World. *The New York Times*. Available at: <http://www.nytimes.com/2012/02/12/sunday-review/big-datas-impact-in-the-world.html> [Accessed January 11, 2013].
- Loukakis, M. 2009. Η Παλαιοχριστιανική Βασιλική της Κολοκούθας. *Αμάλθεια* 40: 156-7.
- Lynam, F. 2011. ArcRange and ArcSeer: presenting a new approach to archaeological data management and representation. In 3D-ARCH International Workshop. Trento.
- Maas, G.S., M.G. Macklin and M.J. Kirkby 1998. Late Pleistocene and Holocene river development in Mediterranean steep-land environments south-west Crete Greece. In G. Benito, V. R. Baker and K. J. Gregory (eds.) *Palaeohydrology and Environmental Change*. Chichester: Wiley. pp.153-66.
- Macgillivray, J.A. 2000. *Minotaur: Sir Arthur Evans and the Archaeology of the Minoan Myth*. First Edition. Hill & Wang.
- Macklin, M.G., S. Tooth, P.A. Brewer, P.L. Noble and G.A.T. Duller 2010. Holocene flooding and river development in a Mediterranean steep-land catchment: the Anapodaris Gorge, south central Crete, Greece. *Global and Planetary Change* 70: 35-52.
- Makropoulos, K. and P. Burton 1984. Greek tectonics and seismicity. *Tectonophysics* 106: 275-304.
- Mango, C. 1974. *Byzantine Architecture*. New York: Electa.
- Mangou, H. and P.V. Ioannou 1998. On the chemical composition of prehistoric Greek copper-based artefacts from Crete. *BSA* 93: 91-102.
- Maniatis, Y. and M. Tite 1981. Technological examination of Neolithic-Bronze Age pottery from Central and South East Europe and the Near East. *Journal of Archaeological Science* 8: 59-76.
- Marinatos, S., 1939. The Volcanic Destruction of Minoan Crete. *Antiquity* 13: 425-39.
- Marinatos, S. 1968-1976. *Excavations at Thera*. Athens: TAP Services.
- Marino, G., E.J. Rohling, W.I.C. Rijpstra, F. Sangiorgi, S. Schouten and J.S. Sinninghe Damsté 2007. Mediterranean Aegean Sea as driver of hydrographic and ecological changes in the eastern Mediterranean. *Geology* 35: 675-78.
- Marino, G., E.J. Rohling, F. Sangiorgi, A. Hayes, J.L. Casford, A.F. Lotter, M. Kucera and H. Brinkhuis 2009. Early and Middle Holocene in the Aegean Sea: interplay between high and low latitude climate variability. *Quaternary Science Review* 28: 3246-62.
- Matheson, S.B. 1980. *Ancient Glass in the Yale University Art Gallery*. Yale University Art Gallery.
- Mauss, M. 1973. Techniques of the body. *Economy and Society* 2 (1): 70.
- Mavroeidis, E. 1941. Ειδήσεις. *ΕΠΙΘΗΤΙΣ ΕΤΑΙΡΕΙΑΣ ΚΡΗΤΙΚΩΝ ΣΠΟΥΔΩΝ* 4: 273-5.
- May, K. 1998. *Imaging the Ancient*. Philadelphia: University of Pennsylvania Museum.
- McCarty, W. 2005. *Humanities Computing*. New York; Basingstoke: Palgrave Macmillan.
- McCoy, F.W. 2009. The Eruption in the Debate About the Date; in: Warburton, D.A., Ed., Time's Up! Dating the Minoan Eruption of Santorini [Acts of the Minoan Eruption Chronology Workshop, Sandbjerg, Denmark, Nov. 2007]; Monographs, Danish Inst. Athens, v. 10: 73-90.
- McCoy, F. W. and Heiken, G., 2000, The Late Bronze Age Explosive Eruption of Thera (Santorini), Greece: Regional and Local Effects. In F.W. McCoy and G. Heiken (eds.) *Volcanic Hazards and Disasters in Human Antiquity*. Geological Society of America Special Paper No. 345. pp.43-70.

Bibliography

- McGovern, P. 2003. *Ancient Wine: The Search for the Origins of Viticulture*. Princeton: Princeton University Press.
- Megarry, W. 2012. *Experiencing the Mountain in Minoan Crete: exploring the evolution of a Bronze Age sacred landscape using GIS*. Unpublished PhD Thesis. University College Dublin.
- Merker, G.S. 2000. *The Sanctuary of Demeter and Core. Teracotta Figurines of the Classical, Hellenistic, and Roman periods*. Corinth Vol. XVIII.IV. Princeton: The American School of Classical Studies at Athens.
- Meyer, C. 1988. Glass from the north theatre, Byzantine church, and soundings at Jerash, Jordan. In Walter E. Rast (ed.) *Preliminary Reports of ASOR-Sponsored Excavations, 1982-85*. Baltimore: The John Hopkins University Press.
- Migowski, C., M. Stein, S. Prasad, J.F.W. Negendank and A. Agnon 2006. Holocene climate variability and cultural evolution in the Near East from the Dead Sea sedimentary record. *Quaternary Research* 66 (3): 421-31.
- Mikhail, E.M., J.S. Bethel and J.C. McGlone 2001. *Introduction to Modern Photogrammetry*. New York: John Wiley & Sons.
- Milić, M. [forthcoming]. PXRf characterisation of obsidian from central Anatolia, the Aegean and central Europe. *Journal of Archaeological Science*.
- Molloy, B.P.C. 2010 Priniatikos Pyrgos: an Early Byzantine settlement in Crete. *Archaeology Ireland* 24.4: 29-31.
- Molloy, B.P.C., J. Day, S. Bridgford, T. Carter, V. Isaakidou, G. Kotzamani, E. Nodarou, M. Milić, P. Westlake and V. Klontza [forthcoming]. Life and Death of a Bronze Age house: excavating Early Minoan I at Priniatikos Pyrgos. *American Journal of Archaeology*.
- Moody, J. 2005a. Unravelling the threads: Climate changes in the Late Bronze III Aegean. In A. L. D'Agata and J.A. Moody (eds.) *Ariadne's Threads: connections between Crete and the Greek Main-land in Late Minoan III*. LM IIIA2. Proceedings of the Inter-national Workshop held at Athens, Scuola Archeologica Italiana, 5–6 April 2003. Athens: Scuola archeologica italiana di Atens (Tripodes 3). pp.443-68.
- Moody, J. 2005b. 'Drought and the decline of Mycenae' updated. In A. Dakouri-Hild and S. Sherratt (eds.) *Autochthon. Papers Presented to O.T.P.K. Dickinson on the Occasion of his Retirement*. British Archaeological Reports S1432. Oxford: Archaeopress. pp. 126-33.
- Moody, J. 2005c. Preliminary report, Vrokastro Survey pottery fabrics. In B.J. Hayden (ed.) *Reports on the Vrokastro Area, Eastern Crete. Volume 3. The Vrokastro Regional Survey Project Sites and Pottery*. Philadelphia: University of Pennsylvania Museum of Archaeology and Anthropology. pp.151-8. [CD].
- Moody, J. 2009. Environmental change and Minoan sacred landscapes. In A.L. D'Agata, A. van de Moortel and M. B. Richardson (eds.) *Archaeologies of Cult: Essays on Ritual and Cult in Crete*. Athens: American School of Classical Studies at Athens (Hesperia Supplement 42). pp. 241-50.
- Moody, J. 2012. Cretan Hinterlands and Hinterseas: resource exploitation and production zones in Prehistoric and Iron Age Crete. In G. Cadogan, K. Kopaka and M. Iacovou (eds.) *Parallel Lives: Ancient Island Societies in Crete and Cyprus*. British School at Athens Studies 20. Athens: British School at Athens. pp. 233-71.
- Moody, J., O. Rackham and G. Rapp, Jr. 1996. Environmental archaeology of Prehistoric NW Crete. *Journal of Field Archaeology* 3: 273-97.
- Morris, M.W. 2002. *Soil Science and Archaeology. Three Test Cases from Minoan Crete*. Philadelphia: INSTAP Academic Press.
- Morrison, J. and D. Park 2008. Reconstructing the ritual killing of the ceramic vessels from Tomb 15. In J. Soles and C. Davaras (eds.) *Mochlos IIA. Period IV. The Mycenaean Settlement and Cemetery: The Sites*. Philadelphia: INSTAP Academic Press. pp.207-14.
- Moser, S. 1992. The visual language of archaeology: a case study of the Neanderthals. *Antiquity* 66 (253): 831-44.
- Moser, S. 2001. Archaeological representation: the visual conventions for constructing knowledge about the past. In I. Hodder (ed.) *Archaeological Theory Today*. Cambridge: Polity Press. pp.262-83.
- Muhly, J.D. 2008. Agia Photia and the Cycladic Element in Early Minoan Metallurgy. In I. Tzachili (ed.) *Aegean Metallurgy in the Bronze Age*. Athens. pp.69-74.
- Muhly, J.D. and E. Sikla (eds.) 2000. *One Hundred Years of American Archaeological Work on Crete*. Athens: The American School of Classical Studies at Athens.
- Mundell Mango, M. 1986. *Silver from Early Byzantium*. Baltimore: Walters Art Gallery.
- Murray, A.S. and A.G. Wintle 2000. Luminescence dating of quartz using an improved single-aliquot regenerative-dose protocol. *Radiation Measurements* 32: 57-73.
- Myers, P.A. and E.J. Rohling 2000. Modeling a 200-yr interruption of the Holocene Sapropel S1. *Quaternary Research* 53: 98-104.
- Niemeier, W.-D. 1980. Die Katastrophe von Thera und die spätminoische Chronologie. *Jahrbuch des deutschen archäologischen Instituts* 95: 1-76.
- Nixon, L.F., J. Moody, S. Price and O. Rackham 1990. Archaeological survey in Sphakia, Crete. *Echos du Monde Classique/Classical Views* 34 (9): 213-20.
- Nodarou, E. 2007. Exploring patterns of intra regional pottery distribution in Late Minoan IIIA-B East Crete: the evidence from the petrographic analysis of three ceramic assemblages. In C.Y. Waksman (ed.) *Archaeometric and Archaeological Approaches to Ceramics*. Papers presented at EMAC '05 8th European Meeting on Ancient Ceramics, Lyon 2005. British Archaeological Reports International Series 1691. Oxford: Archaeopress. pp.75-83.

A Cretan Landscape Through Time: Priniatikos Pyrgos and Environs

- Nodarou, E. 2010. Chapter 1: Petrographic analysis of the LM III pottery assemblage. In R.A.K. Smith (ed.) *Mochlos IIB. Period IV. The Mycenaean Settlement and Cemetery. The pottery*. Philadelphia: INSTAP Academic Press. pp.3-14.
- Nodarou, E. 2012. Pottery fabrics and recipes in the Final Neolithic and Early Minoan I period: the analytical evidence from the settlement and the Rock Shelter of Kephala Petras. In M. Tsiropoulou (ed.) *Petras, Siteia: 25 Years of Excavations and Studies*. Monographs of the Danish Institute at Athens 16. Aarhus: The Danish Institute at Athens. pp. 81–86.
- Nodarou, E. [in press]. Petrographic analysis of Hellenistic cooking ware from the Beam-Press Complex. In N. Vogeikoff-Brogan (ed.) *Mochlos III. Mochlos After the Bronze Age. The Late Hellenistic Settlement: The Beam-Press Complex*. Philadelphia: INSTAP Academic Press.
- Novikova, T., G. Papadopoulos and F.W. McCoy 2011. Modeling of tsunami generated during the “Minoan” eruption of Thera and evaluation of nearshore wave amplitudes and run-up along coastal areas of the southern Aegean Sea. *Geophysics Journal International* 186: 665-80.
- Nowicki, K. 2002. The end of the Neolithic in Crete. *Aegean Archaeology* 6: 7-72.
- Nowicki, K. 2008. *Monasteraki Katalimata: Excavation of a Cretan Refuge Site, 1993-2000*. INSTAP Prehistory Monographs 24. Philadelphia: INSTAP Press.
- Okay, A., E. Demirbag, H. Kurt, N. Okay and I. Kuscu 1999. An active, deep marine strike-slip basin along the North Anatolian fault in Turkey. *Tectonics*, 18: 129-47.
- Olcay, Y. 2001. Lighting methods in the Byzantine period and findings of glass lamps in Anatolia *Journal of Glass Studies* XLIII: 77-87.
- Orland, I., M.C. Bar-Matthews, N.T. Kita, A. Ayalon, A. Matthews and J.W. Valley 2009. Climate deterioration in the Eastern Mediterranean as revealed by ion microprobe analysis of a speleothem that grew from 2.2 to 0.9 ka in Soreq Cave, Israel. *Quaternary Research* 71: 27-35.
- Ortner, D.J. 2003. *Identification of Pathological Conditions in Human Skeletal Remains*. Second edition. San Diego: Academic Press.
- Orton, C. 2005. Point pattern analysis revisited. *Archaeologia e Calcolatori* 15: 299-315.
- Panagiotaki, M. 1999. *The Central Palace Sanctuary at Knossos*. British School at Athens Supplementary Volume 31. London: British School at Athens.
- Papadatos, Y. 2001. Οικιακή οργάνωση και χρήσεις χώρων στο Νεολιθικό–Πρωτομινωικό οικισμό στην Κεφαλά Πετρα, Σητείας. In ΠΕΙΡΑΓΜΕΝΑ ΤΟΥ ΔΙΕΘΝΟΥΣ ΚΡΗΤΟΛΟΓΙΚΟΥ ΣΥΝΕΔΡΙΟΥ (ΧΑΝΙΑ, 1-8 ΟΚΤΩΒΡΙΟΥ 2006). Chania: ΦΙΛΟΛΟΓΙΚΟΣ ΣΥΛΛΟΓΟΣ «Ο ΧΡΥΣΟΣΤΟΜΟΣ». pp.365-78.
- Papadatos, Y. 2007. The Beginning of Metallurgy in Crete: new evidence from the FN-EM I settlement at Kephala Petras, Siteia. In P.M. Day and R.C.P. Doonan (eds.) *Metallurgy in the Early Bronze Age Aegean*. Oxford: Oxbow. pp.154-67.
- Papadatos, Y. 2008. The Neolithic-Bronze Age transition in Crete: new evidence from the settlement at Petras Kephala, Siteia. In V. Isaakidou and P. Tomkins (ed.) *Escaping the Labyrinth: The Cretan Neolithic in Context*. Sheffield Studies in Aegean Archaeology 8. Oxford: Oxbow. pp. 258–272.
- Papadatos, Y. and P. Tomkins 2011. Final Neolithic and Early Minoan pottery from the Pediada survey. In *Proceedings of the 10th International Cretological Congress, Chania, Crete, 1-8 October 2006*. Chania. pp.729-42.
- Papadatos, Y. and P. Tomkins 2013. Trading, the longboat, and cultural interaction in the Aegean during the late fourth millennium B.C.E.: the view from Kephala Petras, East Crete. *American Journal of Archaeology* 117(3): 353-81.
- Papadatos, Y., P. Tomkins, E. Nodarou and Y. Iliopoulos [in press]. The beginning of the Early Bronze Age in Crete: continuities and discontinuities in the ceramic assemblage at Kephala Petras, Siteia. In C. Doumas, A. Giannikouri and O. Kouka (eds.) *The Aegean Early Bronze Age: New Evidence*. Athens: Ministry of Culture, Archaeological Institute of Aegean Studies.
- Papadopoulos, G.A. 2011. *A Seismic History of Crete. The Hellenic Arc and Trench. Earthquakes and Tsunamis: 2000 BC – 2011 AD*. Athens: Ocelotos Editions.
- Papanikola-Bakirtzi, D. (ed.) 1999. *Byzantine Glazed Ceramics: the art of Sgraffito*. Athens: Archaeological Receipts Fund.
- Papazachos, B.C. 1973. Distribution of Seismic Foci in the Mediterranean and surrounding area and its tectonic implication. *Geophys. J. R. Astron. Soc.* 33: 421-430.
- Papazachos, B.C. and P.E. Comninakis 1969. Geophysical features of the Greek island arc and eastern Mediterranean ridge. *C. R. Seances Conf. Reunie Madrid* 16: 74-75.
- Papazachos, B. C. and P.E. Comninakis 1971. Geophysical and tectonic features of the Aegean arc. *J. Geophys. Res.* 76: 8517-33.
- Pasareli, G. 2005. *Βυζαντινή Κρήτη*. Athens: Εκδόσεις Καρακωτσόγλου.
- Pavlopoulos, K., K. Theodorakopoulou, Y. Bassiakos, B. Hayden, T. Tsurou, M. Triantaphyllou, K. Kouli, and D. Vandarakis 2007. Paleoenvironmental evolution of Istron (N.E Crete) during the last 6,000 Years: Depositional environment, climate and sea level changes. *Geodinamica Acta* 20: 219-29.
- Pavlopoulos, K., V. Kapsimalis, K. Theodorakopoulou and I. Panagiotopoulos 2012. Relative sea level changes in the Aegean Sea coastal areas (Eastern Mediterranean) during the Holocene using geoarchaeological indicators. *The Holocene* 22: 717-28.
- Pearson, C.L., D.S. Dale, P.W. Brewer, P.I. Kuniholm, J. Lipton and S.W. Manning 2009. Dendrochemical analysis of a tree-ring growth anomaly associated with the Late Bronze Age eruption of Thera. *Journal of Archaeological Science* 36: 1206-14.

Bibliography

- Pendlebury, H.W., J.D.S. Pendlebury and M.B. Money-Coutts 1935-36. Excavations in the plain of Lasithi I. The cave of Trapeza. *BSA* 36: 5-131.
- Pernicka, E. 1999. Trace element fingerprinting of ancient copper: a guide to technology or provenance? In S.M.M. Young, A.M. Pollard, P. Budd and R.A. Ixer (eds.) *Metals in Antiquity*. Oxford. pp.163-171.
- Peyron, O., S. Goring, I. Dormoy, U. Kotthoff, J. Pross, J.-L. de Beaulieu, R. Drescher-Schneider, B. Vanni re and M. Magny 2011. Holocene seasonality changes in the central Mediterranean region reconstructed from the pollen sequences of Lake Accessa (Italy) and Tenaghi Philippon (Greece). *The Holocene* 21: 131-46.
- Platon, N. 1971. *Zakros. The Discovery of a Lost Palace of Ancient Crete*. New York: Charles Scribner's Sons.
- Pope, K.O. 2004. Geoarchaeology of the western Mesara. In L.V. Watrous, D. Hadzi-Vallianou and H. Blitzer (eds.) *The Plain of Phaistos: cycles of social complexity in the Mesara region of Crete*. Monumenta Archaeologica 23. Los Angeles: Cotsen Institute of Archaeology. pp. 39-58.
- Popham, M. 1967. Late Minoan pottery: a summary. *Annual of the British School at Athens* 62: 337-51.
- Porteous, J.D. and S.E. Smith 2001. *Domicide: The Global Destruction of Home*. Montreal and Kingston: McGill-Queens University Press.
- Poulou-Papademetriou, N. 2003. Μεσοβυζαντινή κεραμική από την Κρήτη: 9^{ος} – 12^{ος} αιώνας. Ch. Bakirtzis ( d.), *Actes du VIIe Congr s International sur la C ramique M di viale en M diterran e*. Athens: Ministry of Culture. pp.211-26.
- Poulou-Papademetriou, N. 2008. Στιγμές από την ιστορία του Ηρακλείου. In Ιωαννίδου-Καρέτσου, Α. (ed.) *Ηρακλείο. Η  γνωστη ιστορία της Αρχαίας Πόλης*. Heraklion: NEA KPHTH.
- Poulou-Papademetriou, N. and E. Nodarou 2007. Le c ramique protobyzantine de Pseira: la production locale et les importations,  tude typologique et p trographique. In M. Bonifay and J.-C. Tr glia (eds.) *LRCW2. Late Roman Course Wares, Cooking Wares and Amphorae in the Mediterranean: archaeology and archeometry*. BAR International Series 1662. Oxford: Archaeopress. pp.755-66.
- Raban, A. 1991. Minoan and Canaanite Harbors. In R. Laffineur and L. Basch (eds.) *Thalassa. L' ge pr historique et la mer. Aegaeum* 7. Li ge: Universit  de Li ge, Histoire de l'art et arch ologie de la Gr ce antique.
- Rackham, O. and J. Moody 1996. *The Making of the Cretan Landscape*. Manchester: Manchester University Press.
- Rambeau, C. and S. Black 2011. Palaeoenvironments of the southern Levant 5,000 BC to present: linking the geological and archaeological records. In S. Mithen and E. Black (eds.) *Water, Life and Civilization: environment and society in the Jordan Valley*. Cambridge: Cambridge University Press. pp. 94-104.
- Renfrew, C., J. Cann and J. Dixon 1965. Obsidian in the Aegean. *Annual of the British School at Athens* 60: 225-47.
- Renfrew, C., J. Dixon and J. Cann 1966. Obsidian and early cultural contact in the Near East. *Proceedings of the Prehistoric Society* 2: 30-72.
- Rice, P. 1987. *Pottery Analysis: a sourcebook*. Chicago: University of Chicago Press.
- Richards, J.C., J. Richards and D. Robinson (eds.) 2000. *Digital Archives from Excavation and Fieldwork: a guide to good practice*. Oxford: Oxbow.
- Ripley, B. 1976. The second order analysis of stationary point process. *Journal of Applied Probability* 13: 255-66.
- Roberts, C. and K. Manchester 2005. *The Archaeology of Disease*. Third edition. Phoenix Mill: Sutton Publishing.
- Roberts, C.N., M.D. Jones, A. Benkaddour, W.J. Eastwood, M.L. Filippi, M.R. Frogley, H.F. Lamb, M.J. Leng, J.M. Reed, M. Stein, L. Stevens, B. Valero-Garce and G. Zanchetta 2008. Stable isotope records of Late Quaternary climate and hydrology from Mediterranean lakes: The ISOMED synthesis. *Quaternary Science Reviews* 27: 2426-41.
- Rohling, E.J. 1994. Review and new aspects concerning the formation of eastern Mediterranean sapropels. *Marine Geology* 122: 1-28.
- Rohling, E.J., F.J. Jorissen and H.C. De Stigter 1997. 200 year interruption of Holocene sapropel formation in the Adriatic Sea. *Journal of Micropaleontology* 16: 97-108.
- Rohling, E.J., P.A. Mayewski, A. Hayes, R.H. Abu-Zied and J.S.L. Casford 2002. Holocene atmosphere-ocean interactions: records from Greenland and the Aegean Sea. *Climate Dynamics* 18: 587-93.
- Rohling, E.J. and H. P like 2005. Centennial-scale climate cooling with a sudden cold event around 8,200 years ago. *Nature* 434: 975-9.
- Rohling, E.J., A. Hayes, P.A. Mayewski and M. Kucera 2009. Holocene climate variability in the eastern Mediterranean and the end of the Bronze Age. In C. Bachhuber and G. Roberts (eds.) *Forces of Transformation: the end of the Bronze Age in the Mediterranean*. Oxford, Oxbow.
- Rosignol-Strick, M. and M. Paterne 1999. A synthetic pollen record of the Eastern Mediterranean sapropels of the last 1 Ma: Implications for the time-scale and formation of sapropels. *Marine Geology* 153: 221-37.
- Rutkowski, B. 1988. *Minoan peak sanctuaries: the topography and architecture*. Aegaeum 2. Li ge: Universit  de Li ge, Histoire de l'art et arch ologie de la Gr ce antique. pp.71-100.
- Said, E.W. 1979. *Orientalism*. 1st Vintage Books Edition. Vintage.
- Sanders, I.F. 1982. *Roman Crete: an archaeological survey and gazetteer of Late Hellenistic, Roman and Early Byzantine Crete*. Warminster: Aris and Phillips Ltd.
- Sarris, A. 2008. Remote sensing approaches: geophysical. In D.M. Rearsall (ed.) *Encyclopedia of Archaeology*. New York: Academic Press. pp.1912-21.

A Cretan Landscape Through Time: Priniatikos Pyrgos and Environs

- Sarris, A., E. Kokkinou, K. Kouriati, E. Aedona, L. Karagianni, G. Vargemezis, G. Stamatis, M. Elvanidou, E. Katifori, M. Kaskanioti, S. Soetens, Th. Kalpaxis, Y. Bassiakos, C. Athanassas, B. Hayden and T. Brennan 2005. Geophysical & geomorphological studies at the wider Istron area, E. Crete. Presentation at the 6th *International Conference on Archaeological Prospection*. National Research Council (CNR), Rome.
- Sarris, A., Kouriati, K., Kokkinou, E., Aedona, E., Karagianni, L., Vargemezis, G., Stamatis, G., Elvanidou, M., Katifori, M., Kaskanioti†, M., Soetens, S., Kalpaxis, Th., Bassiakos, Y., Athanassas, C., Hayden, B. & Brennan, T. 2007. A multi-disciplinary approach to industrial sites of the Vrokastro region of Mirabello, Eastern Crete. In A. Figueiredo and G. Velho (eds.) *Proceedings of the XXXIII Computer Applications and Quantitative Methods in Archaeology Conference*. "The World in Your Eyes". March 2005, Tomar, Portugal. Tomar: CAA Portugal – Associacao para o Desenvolvimento das Aplicacoes Informaticas e Novas Tecnologias em Arqueologia. pp.211-17.
- Schilman, B., M. Bar-Matthews, A. Almogi-Labin and B. Luz 2001. Global climate instability reflected by Eastern Mediterranean marine records during the late Holocene. *Palaeogeography, Palaeoclimatology, Palaeoecology* 176: 157-76.
- Seager, R.B. 1904-1905. Excavations at Vasiliki, 1904. *University of Pennsylvania Transactions of the Department of Archaeology, Free Museum of Science and Art* 1: 207-21.
- Seager, R.B. 1906-1907. Report of excavations at Vasiliki, Crete, in 1906. *University of Pennsylvania Transactions of the Department of Archaeology, Free Museum of Science and Art* 2: 111-32.
- Seager, R.B. 1910. *Excavations in the Island of Pseira, Crete*. University of Pennsylvania Museum Anthropological Publications III. Philadelphia: the Free Museum of Science and Art.
- Seager, R.B. 1912. *Explorations on the Island of Mochlos*. Boston and New York: American School of Classical Studies at Athens.
- Shahrukh, M., P. Soupios, N. Papadopoulos and A. Sarris 2012. Geophysical investigations at the Istron archaeological site, eastern Crete, Greece using seismic refraction and electrical resistivity tomography. *Journal of Geophysics and Engineering* 9 (6): 749.
- Shaman, J. and E. Tziperman 2011. An atmospheric teleconnection linking ENSO and southwestern European precipitation. *Journal of Climate* 24: 124-39.
- Shanks, M. 1997. Photography and archaeology. In B. Molyneux (ed.) *The Cultural Life of Images: visual representation in archaeology*. London: Routledge. pp.73-107.
- Shanks, M. and C. Tilley 1993. *Re-constructing Archaeology: theory and practice*. Second Edition. London: Routledge.
- Shanks, M. and I. Hodder 1995. Processual, postprocessual and interpretive archaeologies. In A. Alexandri et al. (eds.) *Interpreting Archaeology: finding meaning in the past*. London: Routledge. pp.3-29.
- Shaw, J.W. 1971. *Minoan Architecture: Materials and Techniques*. Rome: Istituto Poligrafico dello Stato.
- Shaw, J.W. 1990. Bronze Age Aegean harboursides. In D.A. Hardy (ed.) *Thera and the Aegean World III*. London: Thera Foundation. pp.425-27.
- Shaw, J.W. 2004. Roof Drains and Parapets in the Southern Aegean. *Annual of the British School at Athens* 99: 173-88.
- Shelford, P., F. Hodson, M.E. Cosgrove, S.E. Warren and C. Renfrew 1982. The obsidian trade. In C. Renfrew and J.M. Wagstaff (eds.) *An island polity: the archaeology of exploitation in Melos*. Cambridge: Cambridge University Press. pp.182-221.
- Shepherd, J.D. 1999. The glass. In A.G. Poulter (ed.) *Nicopolis ad Istrum: a Roman to Early Byzantine city*. Leicester: Leicester University Press. pp.297-356.
- Sheratt, S. 2009. Representations of Knossos and Minoan Crete in the British, American and Continental press, 1900-c.1930. *Creta Antica* 10 (2): 619-49.
- Simons, H.C. 1969. *Archaeological Photography*. New York: New York University Press.
- Smiles, S. and S. Moser (eds.) 2005. *Envisioning the Past: Archaeology and the Image*. Malden, MA; Oxford: Blackwell.
- Smith, M.L. 2003. Preface. In P.P. Betancourt *H Ελλάδα και οι γείτονές της στα Ταχυδρομικά Δελτάρια (1895-1920). Greece and Her Neighbors in Historic Postcards: 1895-1920*. Athens: Potamos. pp.8-9.
- Soetens, S. 2006. *Minoan Peak Sanctuaries, Building a Cultural Landscape Using GIS*. Unpublished PhD dissertation, University of Louvain.
- Soles, J.S. 1991. The Gournia palace. *American Journal of Archaeology* 95: 17-78.
- Soles, J. 2001. Reverence for dead ancestors in prehistoric Crete. In R. Laffineur and R. Hägg (eds.) *Potnia: Deities and Religion in the Aegean Bronze Age*. Aegaeum 22. Liège: Université de Liège. pp. 229-36.
- Soles, J.S. and C. Davaras 1992. Excavations at Mochlos, 1989. *Hesperia* 61: 413-45.
- Soles, J.S. and C. Davaras 1994. Excavations at Mochlos, 1990-1991. *Hesperia* 63: 391-436.
- Soles, J.S., S.R. Taylor and C.J. Vitaliano 1995. Tephra samples from Mochlos and their chronological implication for Neopalatial Crete. *Archaeometry* 37: 385-93.
- Soles, J.S. and C. Davaras 1996. Excavations at Mochlos, 1992-1993. *Hesperia* 65: 175-230.
- Sontag, S. 1977. *On Photography*. London: Penguin Classics.

Bibliography

- Spakman, W., M.J.R. Wortel and N.S. Vlaar 1988. The Hellenic subduction zone: a tomographic image and its geodynamical implications, *Geophys. Res. Lett.* 15: 60-63.
- Speakman, R.J. and S.M. Shackley 2013. Silo science and portable XRF in archaeology: a response to Frahm. *Journal of Archaeological Science* 40: 1435-43.
- Starida, L. and E. Kanaki 2010. Ανασκαφές στην πόλη του Ηρακλείου ως το 2008. In M. Andrianakis and I. Tzachili (eds.) *Archaeological Work in Crete I*. Proceedings of the 1st Meeting Rethymnon, 28-30 November 2008. Rethymno. pp.402-13.
- Stern, E.M. 2001. *Roman, Byzantine, and Early Medieval Glass 10 BCE-700 CE*. Ernesto Wolf Collection. Hatje Cantz.
- Stevanovic, M. 1997. The age of clay: the social dynamics of house destruction. *J. Anth. Arch.* 16: 334-95.
- Strasser, T., E. Panagopoulou, C. Runnels, P. Murray, N. Thompson, P. Karkanias, F. McCoy and K. Wegmann 2010. Stone Age seafaring in the Mediterranean: evidence from the Plakias region for Lower Palaeolithic and Mesolithic habitation of Crete. *Hesperia* 79: 146-90.
- Strasser, T.F., C. Runnels, K. Wegmann, E. Panagopoulou, F. McCoy, C. Digregorio, P. Karkanias and N. Thompson 2011. Dating Palaeolithic sites in southwestern Crete. *Journal of Quaternary Science* 26 (5): 553-60.
- Sweetman, R.J. 2004. Late Antique Knossos. Understanding the city: evidence of mosaics and religious architecture. *The Annual of the British School at Athens* 100: 315-54.
- Sweetman, R.J. 2005. Knossos Medical Faculty Site: Late Antique graves and other remains. *Annual of the British School at Athens* 100: 331-86.
- Sweetman, R.J. 2007. Roman Knossos: the nature of a globalized city. *American Journal of Archaeology* CXI (1): 61-81.
- Talbot Rice, D. 1930. *Byzantine Glazed Pottery*. Oxford: Clarendon Press.
- Taylor, G.M., S. Widdison, I.N. Brown, D. Young and T. Molleson 2000. A medieval case of lepromatous leprosy from 13th-14th century Orkney, Scotland. *Journal of Archaeological Science* 27: 1133-8.
- Themelis, P. (ed.) 2000 / 2004. Πρωτοβυζαντινή Ελεύθερνα. Τομέας Ι. Πρώτος τόμος. Πανεπιστήμιο Κρήτης. Athens.
- Theodorakopoulou, K. 2009. *The Influence of Environmental Conditions to the Palaeogeographic Evolution of Archaeological Sites and to the Preservation of their Remains*. Unpublished PhD Thesis. Harokopio University of Athens, Greece.
- Theodorakopoulou, K., K. Pavlopoulos, T. Tsourou, M. Triantaphyllou, K. Kouli, D. Vandarakis, Y. Bassiakos and B. Hayden 2005. Coastal changes and human activities at Istron-Kalo Chorio (NE Crete, Greece) during the Upper Holocene. *Revista de geomorfologie* 7: 21-31.
- Theodorakopoulou, K., K. Pavlopoulos, M. Triantaphyllou, K. Kouli, M. Tsourou, Y. Bassiakos, N. Zacharias and B. Hayden 2009. Geoarchaeological studies in the coastal area of Istron-Kalo Chorio (Gulf of Mirabello-eastern Crete): landscape evolution and paleoenvironmental reconstruction. *Zeitschrift für Geo-morphologie* 53 (Suppl. 1): 55-70.
- Theodorakopoulou, K., K. Pavlopoulos, C. Athanassas, N. Zacharias, Y. Bassiakos 2012. Geoarchaeological investigations, depositional environment and Holocene climatic events, in Istron, Gulf of Mirabellum, N.E Crete. *Quaternary International* 266: 62-73.
- Tilley, C. 1994. *Interpretative Archaeology*. Oxford: Berg.
- Tilley, C. 2004. *The Materiality of Stone: Explorations in Landscape Phenomenology*. Oxford: Berg.
- Todaro, S. 2005. EM I-MM IA ceramic groups at Phaistos: towards the definition of a Prepalatial ceramic sequence in South Central Crete. *Creta Antica* 6: 11-46.
- Tomkins, P. 2007. Neolithic: Strata IX-VIII, VII-VIB, VIA-V, IV, IIIB, IIIA, IIB, IIA and IC groups. In N. Momigliano (ed.) *Knossos Pottery Handbook: Neolithic and Bronze Age (Minoan)*. London: British School at Athens. pp. 9-48.
- Tomkins, P.E. 2008. Time, space and the reinvention of the Cretan Neolithic. In V. Isaakidou and P.D. Tomkins (eds.) *Escaping the Labyrinth: the Cretan Neolithic in Context*. Oxford, Oxbow. pp. 21-48.
- Tomkins, P. and P.M. Day 2001. Production and exchange of the earliest ceramic vessels in the Aegean: a view from Early Neolithic Knossos, Crete. *Antiquity* 75: 259-60.
- Tomkins, P. and I. Schoep 2010. Crete. In E. Cline (ed.) *The Oxford Handbook of the Aegean Bronze Age*. Oxford: Oxford University Press. pp.66-82.
- Touchan, R., U. Akkemik, M.K. Hughes and N. Erkan 2007. May-June precipitation reconstruction of southwestern Anatolia, Turkey during the last 900 years from tree rings. *Quaternary Research* 68: 196-202.
- Triantaphyllidis, P. 2007. Glassmakers of Late Antiquity in Greece: philological references and new archaeological evidence. *Journal of Glass Studies* ID: 262-4.
- Triantaphyllou, M., A. Antonarakou, K. Kouli, M. Dimiza, G. Kontakiotis, P. Ziveri, G. Mortyn, V. Lykousis and M.D. Dermitzakis 2007. Plankton ecostratigraphy and pollen assemblage zones over the last 14 000 years in SE Aegean Sea (core ns-14). *Bulletin of the Geological Society of Greece XXXX*. Proceedings of the 11th International Congress, Athens, May, 2007. pp.209-24.
- Triantaphyllou, M.V., A. Antonarakou, M. Dimiza and C. Anagnostou 2009a. Calcareous nannofossil and planktonic foraminiferal distributional patterns during deposition of sapropels S6, S5 and S1 in the Libyan Sea (Eastern Mediterranean). *Geo-Marine Letters* 30 (1): 1-13.
- Triantaphyllou, M.V., A. Antonarakou, K. Kouli, M. Dimiza, G. Kontakiotis, M.D. Papanikolaou, P. Ziveri, P.G.

A Cretan Landscape Through Time: Priniatikos Pyrgos and Environs

- Mortyn, V. Lianou, V. Lykousis and M. Dermitzakis 2009b. Late Glacial–Holocene ecostratigraphy of the south-eastern Aegean Sea, based on plankton and pollen assemblages. *Geo-Marine Letters* 29 (4): 249–67.
- Trigger, B.G. 1996. *A History of Archaeological Thought*. Second Edition. Cambridge: Cambridge University Press.
- Tringham, R. 2005. Weaving house life and death into places: a blueprint for a hypermedia narrative. In D. Bailey, A. Whittle and A. Cummings (eds.) *(Un)Settling the Neolithic*. Oxford: Oxbow. pp. 98–111.
- Tsipidis, S., A. Koussoulakou and K. Kotsakis 2011. Geovisualisation and archaeology: supporting excavation site research. In A. Ruas (ed.) *Advances in Cartography and GIScience*. Volume 2. Heidelberg: Springer. pp.85–107.
- Tsipopoulou, M. 2012. Kampos pottery group from the cemetery of Petras, Siteia. In E. Mantzourani and P. Betancourt (eds.) *Philistor: Studies in Honor of Costis Davaras*. Philadelphia: INSTAP Academic Press. pp. 213–222.
- Tsoungarakis, D. 1988. *Byzantine Crete: from the 5th century to the Venetian conquest*. Historical Monographs 4. Athens: Stephanus D. Basilopoulos.
- Tykot, R. 2011. Obsidian finds on the fringes of the Central Mediterranean: exotic or eccentric exchange? In A. Vianello (ed.) *Exotica in the Prehistoric Mediterranean*. Oxford: Oxbow. pp.33–45.
- Tzedakis, C. 2007. Seven ambiguities in the Mediterranean palaeoenvironmental narrative. *Quaternary Science Reviews* 26: 2042–66.
- Tzonou-Herbst, I.N. 2009. Trashing the sacred: the use-life of Mycenaean figurines. In A-L. Schallin (ed.) *Encounters with Mycenaean Figures and Figurines*. Papers Presented at a Seminar Swedish at Athens 27–29 April 2001. Athens: Skrifter Utgivna av Svenska Institutet i Athen 8° XX. pp.161–75.
- Vallianou, D. 1997. The potters' quarter in LM III Gouves. In R. Laffineur and P.P. Betancourt (eds.) *TEXNH II. Craftsmen and Craftsmanship in the Aegean Bronze Age*. Aegaeum 16. Liège: Université de Liège. pp.333–43.
- Vannière, B., M.J. Power, N. Roberts, W. Tinner, J. Carrin, M. Magny, P. Bartlein, D. Colombaroli, A.L. Daniau, W. Finsinger, G. Gil-Romera, P. Kaltenrieder, R. Pini, L. Sadori, R. Turner, V. Valsecchi and E. Vescovi 2011. Circum-Mediterranean fire activity and climate changes during the mid-Holocene environmental transition (8500–2500 cal. yr BP). *The Holocene* 21 (1): 53–73.
- Varoufakis G. 2005. Η ιστορία του σιδήρου από τον Όμηρο στον Ξενοφώντα. *Ελληνικά Γράμματα*. Athens.
- Vasilakis, A. and K. Branigan 2010. *Moni Odigitria: a prepalatial cemetery and its environs in the Asterousia, southern Crete*. Philadelphia: INSTAP Academic Press.
- Vaughan, S. 2002. Petrographic analysis of ceramics from the Pseira cemetery. In P.P. Betancourt and C. Davaras (eds.) *Pseira VI: The Pseira Cemetery I. The Surface Survey*. Philadelphia: INSTAP. pp.147–65.
- Vita-Finzi, C. 1966. New Elysian fields. *American Journal of Archaeology* 70: 175–8.
- Vita-Finzi, C. 1969. *The Mediterranean Valleys: geological changes in historical times*. Cambridge: Cambridge University Press.
- Vitaliano, C.J., S.R. Taylor, M.D. Norman, M.T. McCulloch and L.A. Nicholls 1990. Ash Layers of the Thera volcanic series: stratigraphy, petrology and geochemistry. In D.A. Hardy (ed.) *Thera and the Aegean World III, vol. 2: Earth Sciences*. London: The Thera Foundation. pp. 53–78.
- Viviers, D. 2006. Itanos. Archéologie d'une cite crétoise. In *L'archéologie à l'Université Libraie de Bruxelles (2001 - 2005). Matériaux pour une histoire des milieux et des pratiques humaines*. Etudes d'archéologie 1. pp.97–108.
- Vogt, Ch. 1994. Πρωτοβυζαντινή κεραμική από την Άγια Γαλήνη. Κρητική Εστία. *Περίοδος Δ' 4* (1989 – 1991): 39–75.
- Vogt, Ch. 2000. The Early Byzantine Pottery. In P.G. Themelis (ed.) *Πρωτοβυζαντινή Ελεύθερνα. Τομέας Ι. δεύτερος τόμος. Πανεπιστήμιο Κρήτης*. Rethymno: University of Crete. pp.37–199.
- Vroom, J. 2005. *Byzantine to Modern Pottery in the Aegean: an introduction and field guide*. Utrecht: Paranassus Press.
- Wallis, H. 1907. *Byzantine Ceramic Art: notes on examples of Byzantine pottery recently found at Constantinople with illustrations*. London: B. Quaritch.
- Warren, P. 1972. *Myrtos: An Early Bronze Age Settlement in Crete*. BSA Supp. Vol. 7. London: British School at Athens.
- Warren, P. and J. Tzedhakis 1974. Debla. An Early Minoan settlement in Western Crete. *BSA* 69: 299–342.
- Watrous, L.V. 1982. *Lasithi: A History of Settlement on a Highland Plain in Crete*. Hesperia Supplement 18. Princeton: American School of Classical Studies.
- Watrous, L.V., D. Haggis, K. Nowicki, N. Vogeikoff-Brogan and M. Schultz 2012. *An Archaeological Survey of the Gournia Landscape*. Prehistory Monographs 37. Philadelphia: INSTAP Academic Press.
- Watterson, A. 2012. Hyper-realism, photo-realism and learning to be realistic. *Digital Dirt Virtual Pasts*. Available at: <http://digitaldirtvirtualpasts.wordpress.com/2012/08/17/hyper-realism-photo-realism-and-learning-to-be-realistic/> [Accessed January 15, 2013].
- Wedde, M. 1991. Aegean Bronze Age ship imagery: regionalisms, a Minoan bias, and a 'thalassocracy'. In R. Laffineur and L. Basch (eds.) *Thalassa. L'Égée préhistorique et la mer*. Aegaeum 7. Liège: Université de Liège. pp.73–94.
- Wedde, M. 2000 *Towards a Hermeneutics of Aegean Bronze Age Ship Imagery*. Peleus 6. Mannheim und Möhnesee: Bibliopolis.

Bibliography

- Weinberg, G.D. 1959. Glass manufacture in ancient Crete: a preliminary study. *Journal of Glass Studies* 1: 11-22.
- Weyl, W.A. 1976. *Coloured Glasses*. Second edition. Sheffield: Society of Glass Technology.
- Whitelaw, T. 1983. The Settlement at Fournou Korifi Myrtos and Aspects of Early Minoan Social Organization. In O. Krzyszkowska and L. Nixon (eds.) *Minoan Society: Proceedings of the Cambridge Colloquium, 1981*. Bristol: Bristol Classical Press. pp.323-45.
- Whitelaw, T. 2007. House, households and community at Early Minoan Myrtos Fournou Korifi: methods and models for interpretation. In R. Westgate and J. Whitley (eds.) *Building Communities: House, Settlement and Society in the Aegean and Beyond*. BSA Studies 15. London: British School at Athens. pp.65-76.
- Whitelaw, T., P.M. Day, E. Kiriati, V. Kilikoglou and D. Wilson 1997. Ceramic traditions at EM IIB Myrtos Fournou Korifi. In R. Laffineur and P.P. Betancourt (eds.) *TEXNH: Craftsmen, Craftswomen and Craftsmanship in the Aegean Bronze Age*. Aegaeum 16. Liège: Université de Liège. pp.265-74.
- Wiener, M.H. 1984. Crete and the Cyclades in LM I: the tale of the conical cups. In R. Hägg and N. Marinatos (eds.) *The Minoan Thalassocracy. Myth and Reality*. Skrifter Utgivna av Svenska Institutet I Athen 4. Stockholm: Svenska Institutet I Athen. pp.17-26.
- Wilson, D. 1985. The pottery and architecture of the West Court House at Knossos. *BSA* 80: 281-364.
- Wilson, D. 2007. Early Prepalatial (EM I-EM II): EM I well, West Court House, North-East Magazines and South Front groups. In N. Momigliano (ed.) *Knossos Pottery Handbook: Neolithic and Bronze Age (Minoan)*. London: British School at Athens. pp. 49-77.
- Wilson, D. and P.M. Day 1994. Ceramic regionalism in prepalatial central Crete: the Mesara imports at EM I to EM IIA Knossos. *BSA* 89: 1-87.
- Wilson, D. and P.M. Day 2000. EM I chronology and social practice: pottery from the early palace tests at Knossos. *BSA* 95: 21-63.
- Wilson, D., P.M. Day, and N. Dimopoulou-Rethemiotaki 2004. The pottery from Early Minoan I-IIB Knossos and its relations with the harbour site of Poros-Katsambas. In G. Cadogan, E. Hatzaki, and A. Vasilakis (eds.) *Knossos: Palace, City, State*. British School at Athens Studies 12. London: British School at Athens. pp.67-74.
- Wilson, D., P.M. Day and N. Dimopoulou-Rethemiotaki 2008. The gateway port of Poros-Katsambas: trade and exchange between north-central Crete and the Cyclades in EB I-II. In N. Brodie, J. Doole, G. Gavalas, and C. Renfrew (eds.) *Horizon. Opiζων: A Colloquium on the Prehistory of the Cyclades*. McDonald Institute Monographs Cambridge: McDonald Institute for Archaeological Research. pp. 261-70.
- Wolf, P.R. 1974. *Elements of Photogrammetry (with air photo interpretation and remote sensing)*. New York: McGraw-Hill.
- Wood, J. 2000. Food and drink in European prehistory. *European Journal of Archaeology* 3: 89-111.
- Xanthoudides, S. 1906. Προϊστορική οικία εις Χαμαίζη Σητείας, *Archaiologiki Ephemeris* 1906. pp.117-54.
- Xanthoudides, S. 1918. Megau protominoikou tafou Pyrgou. *ArchDelt* 4: 136-70.
- Xanthoudides, S. 1924. *The Vaulted Tombs of Mesará. An Account of Some Early Cemeteries of Southern Crete*. Liverpool: Liverpool University Press.
- Yangaki, A. 2004. Οι τάφοι. In Themelis, P. (ed.) *Πρωτοβυζαντινή Ελεύθερνα. Τομέας Ι. Πρώτος τόμος*. Πανεπιστήμιο Κρήτης. Athens. pp.115-86.
- Yangaki, A. 2004-2005. Amphores cretoise: le cas d'Éleutherna, en Crète. *Bulletin de Correspondence Hellénique* 128-9: 503-23.
- Yangaki, A. 2005. La Céramique des IVe - VIIIe siècles ap. J.-C. d' Eleutherna. *Πανεπιστήμιο Κρήτης*. Athens.
- Yangaki, A. 2008. Céramique glaçurée provenant de Nauplie et d'Argos (XIIe – XIIIe siècles): observations préliminaires. *Bulletin de Correspondence Hellénique* 132: 587-616.
- Zacharias, N., Y. Bassiakos, B. Hayden, K. Theodorakopoulou and C.T. Michael 2009. Luminescence dating of deltaic deposits from Eastern Crete, Greece: geoarchaeological implications. *Geomorphology* 109 (1-2): 46-53.
- Zaro, Z.E. 2008. *Ritual Activity and Regional Dynamics: towards a reinterpretation of Minoan extra-urban ritual space*. Unpublished PhD Thesis. University of Michigan.
- Zervantonakis C. 1985. Η συμβολή του πλούτου της Κρήτης στην αναζήτηση του πολιτισμού της αρχαιότητας. *Πεπραγμένα του Ε' Κρητολογικού Συνεδρίου* Α: 121-4.