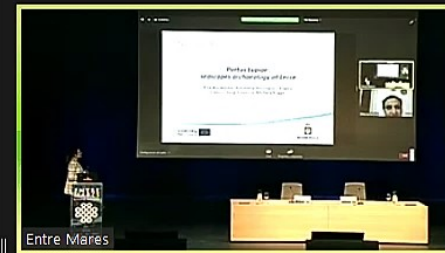


UNDERWATERMUSE

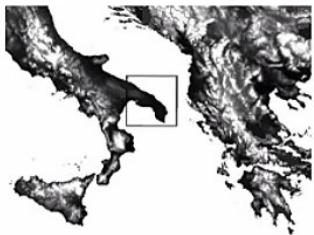
Portus Lupiae: seascapes archaeology at Lecce

Rita Auriemma, Antonella Antonazzo, Angelo Colucci, Luigi Coluccia, Michela Rugge

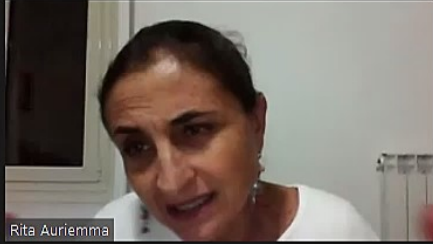
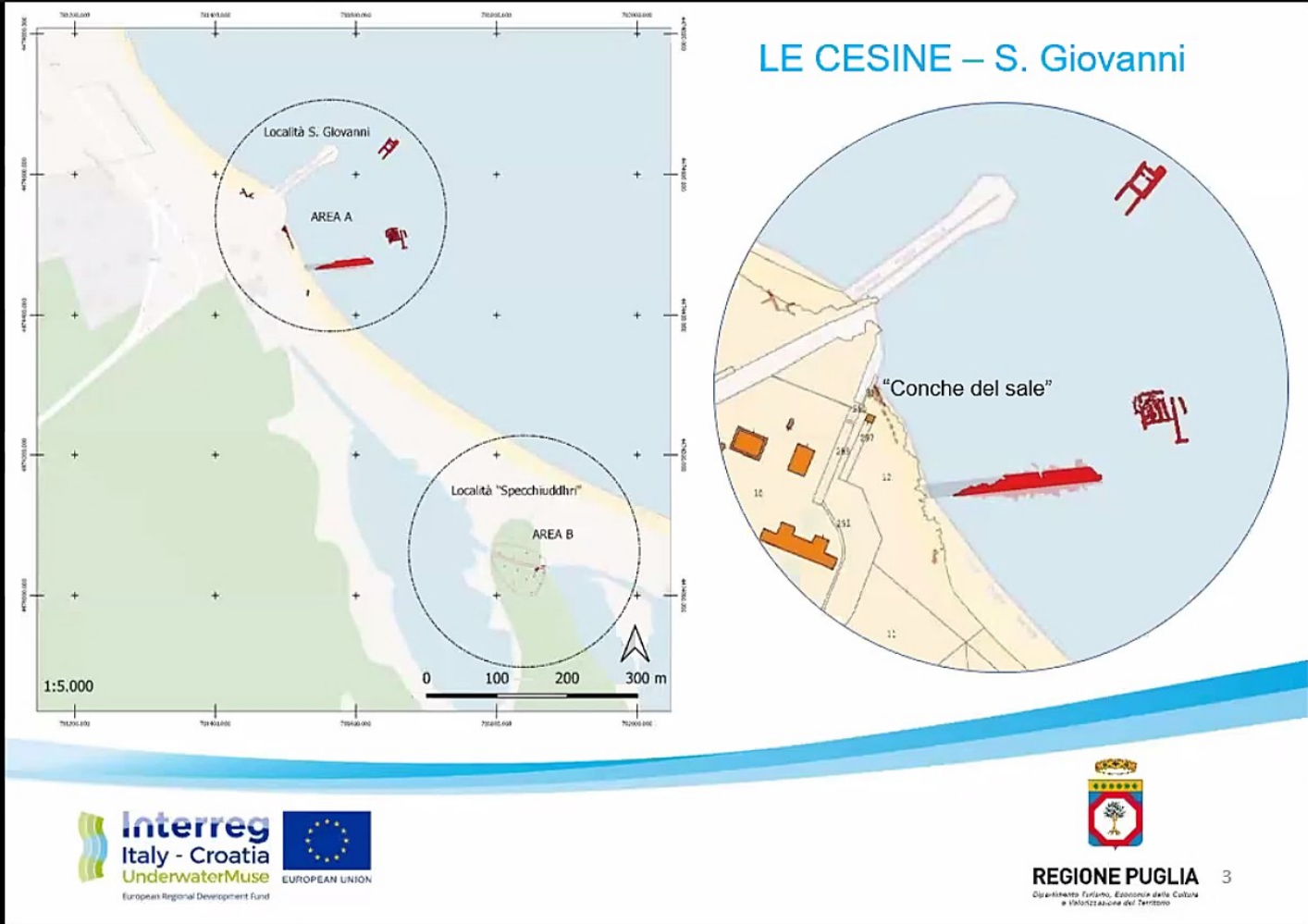


UNDERWATERMUSE

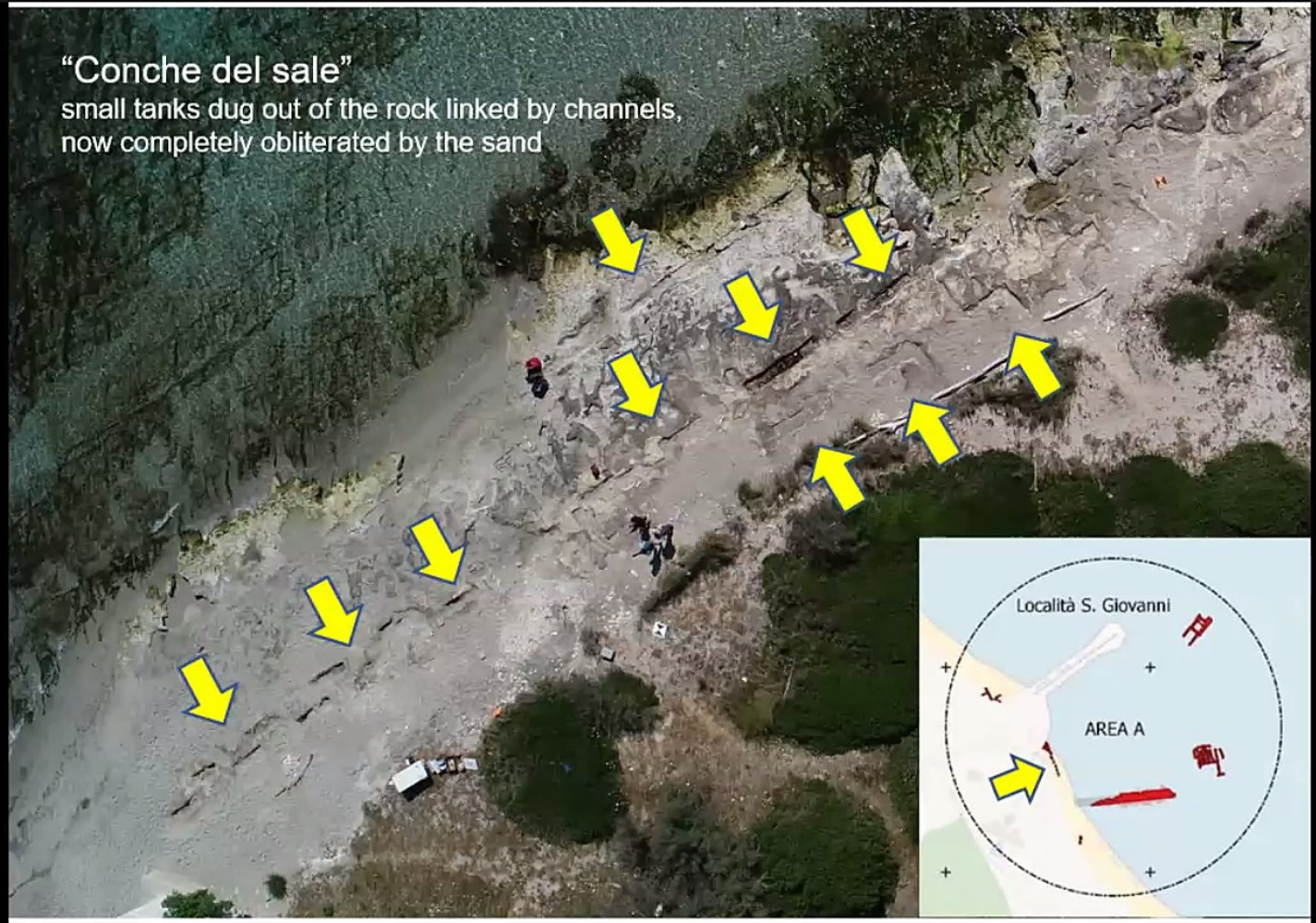
LE CESINE

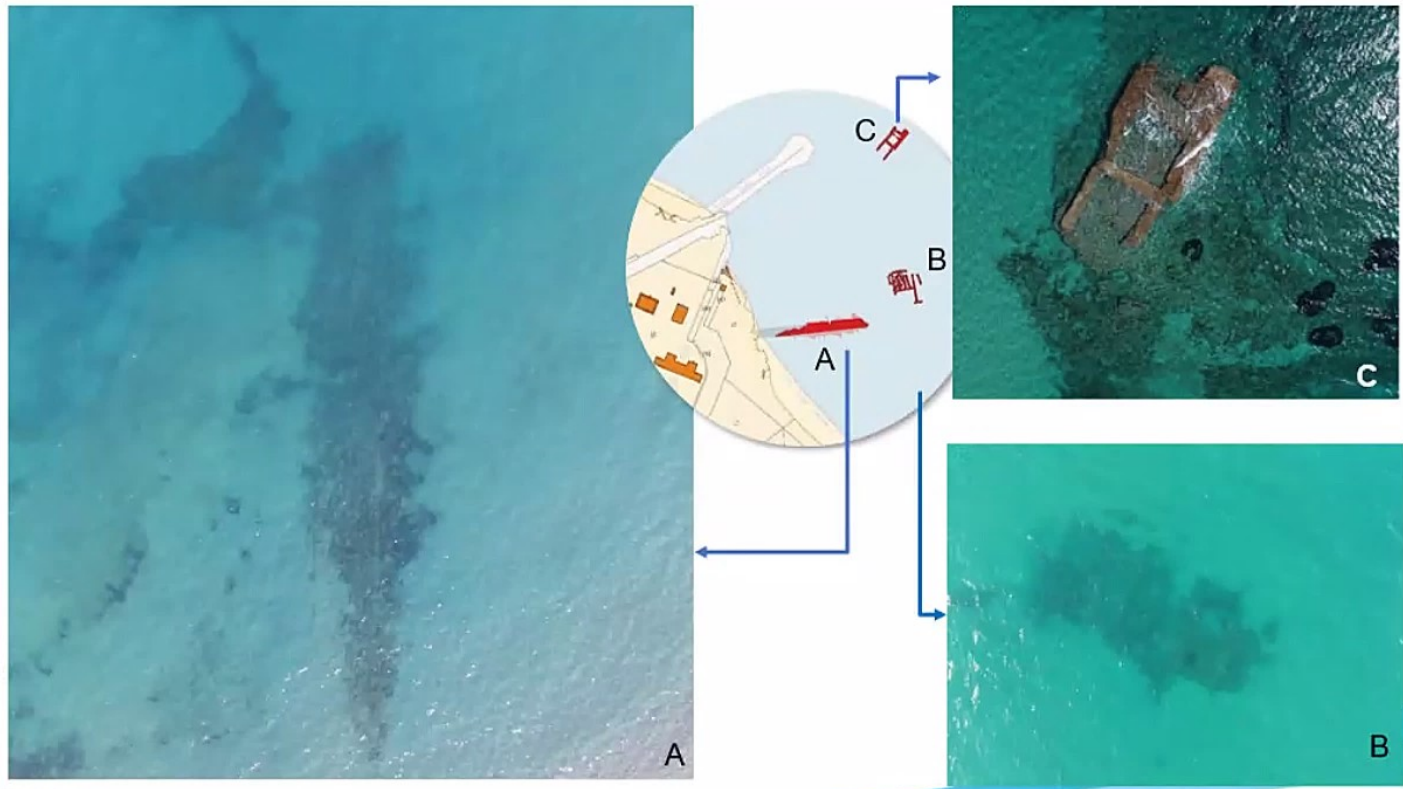


Rita Auriemma



“Conche del sale”
small tanks dug out of the rock linked by channels,
now completely obliterated by the sand



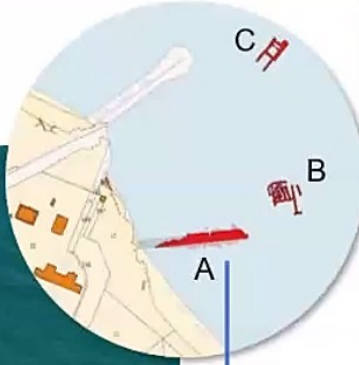


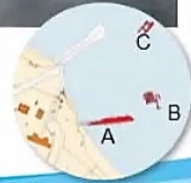
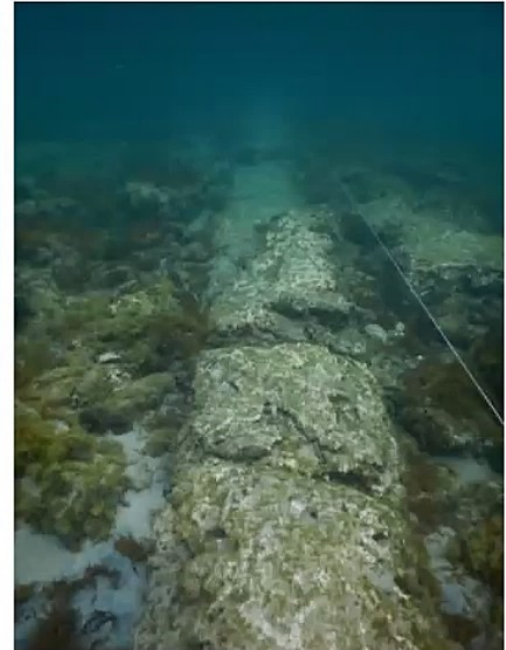
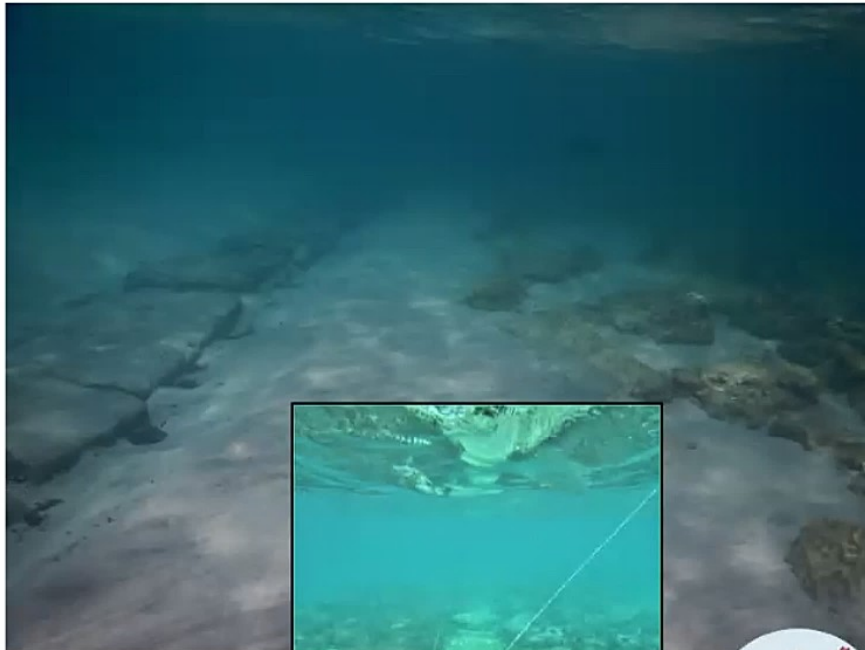
S. Giovanni. Aerial view of the submerged structures



Rita Auriemma

S. Giovanni. Sector A. The big pier





S. Giovanni. Sector A
Th big pier

Interreg
Italy - Croatia
UnderwaterMuse
European Regional Development Fund

The two sides.
Strings of squared blocks


REGIONE PUGLIA 8
Dipartimento Turismo, Economia della Cultura
e Valorizzazione del Territorio

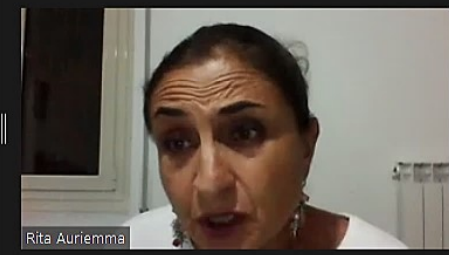


Rita Auriemma

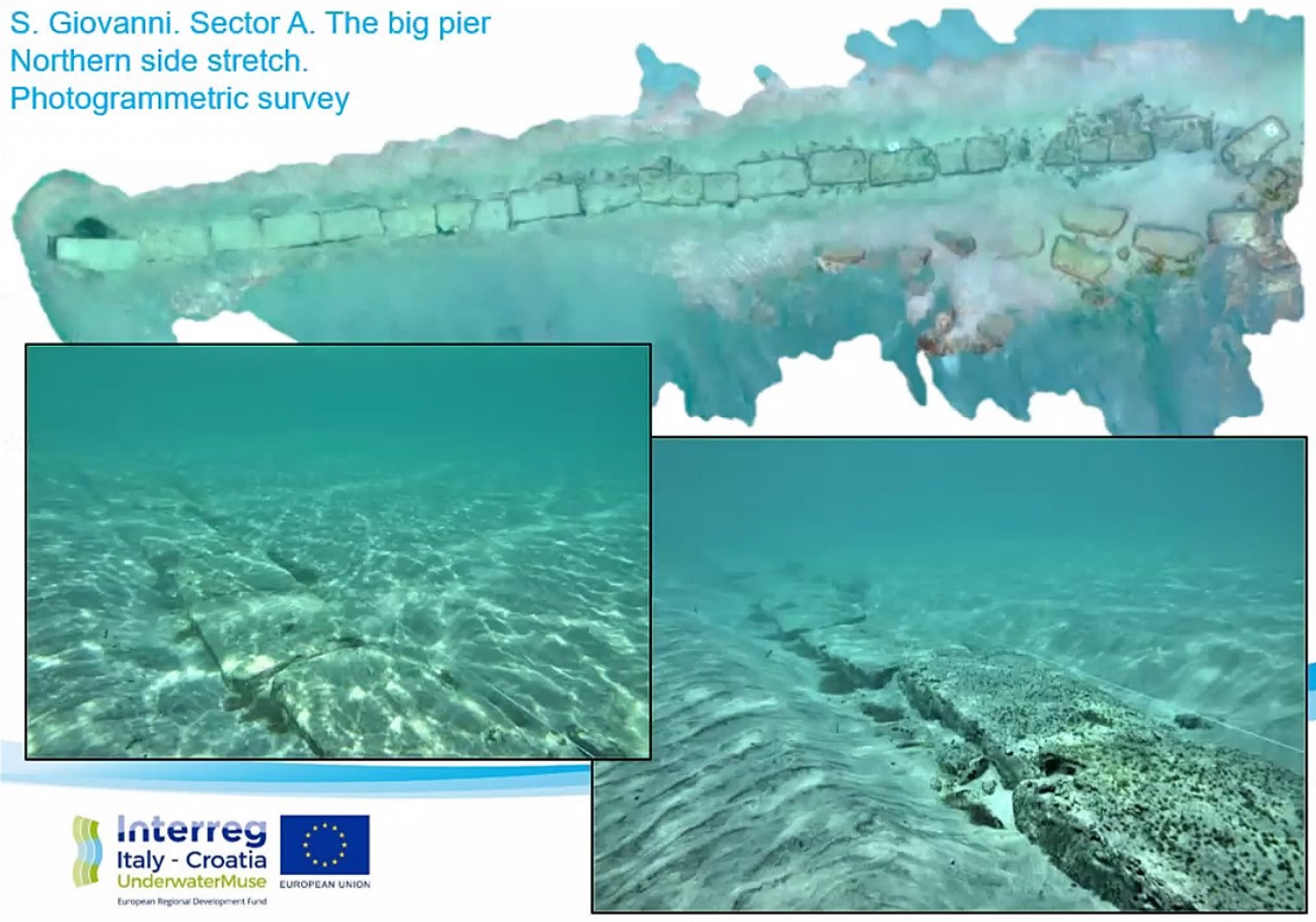


S. Giovanni.
Sector A
The big pier

The southern side with overlapping rows

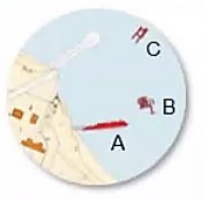


S. Giovanni. Sector A. The big pier
Northern side stretch.
Photogrammetric survey





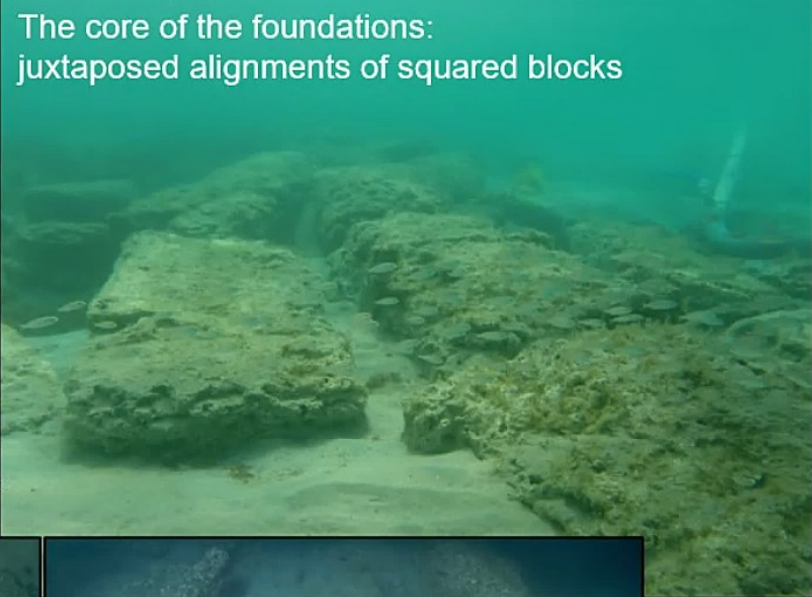
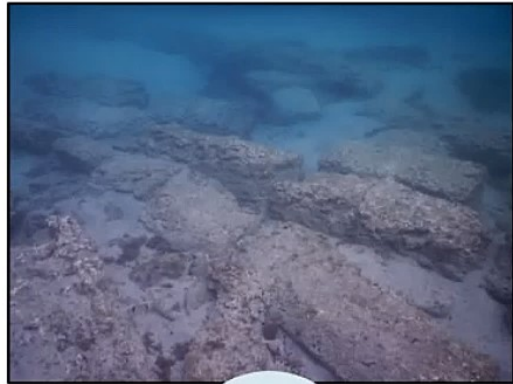
S. Giovanni
Sector A
The big pier



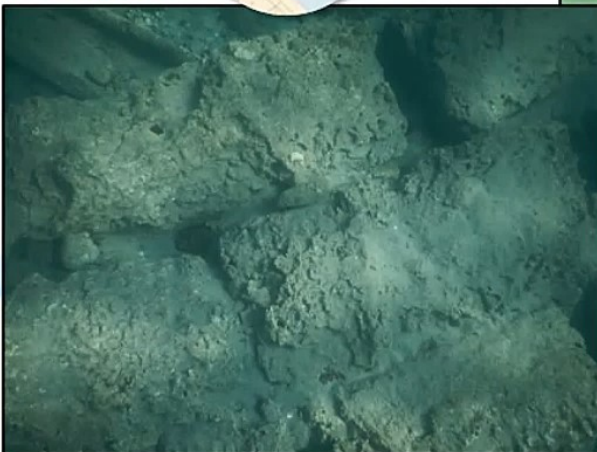
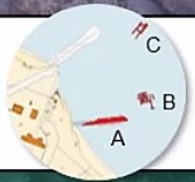
Presumed bollards along
the southern side



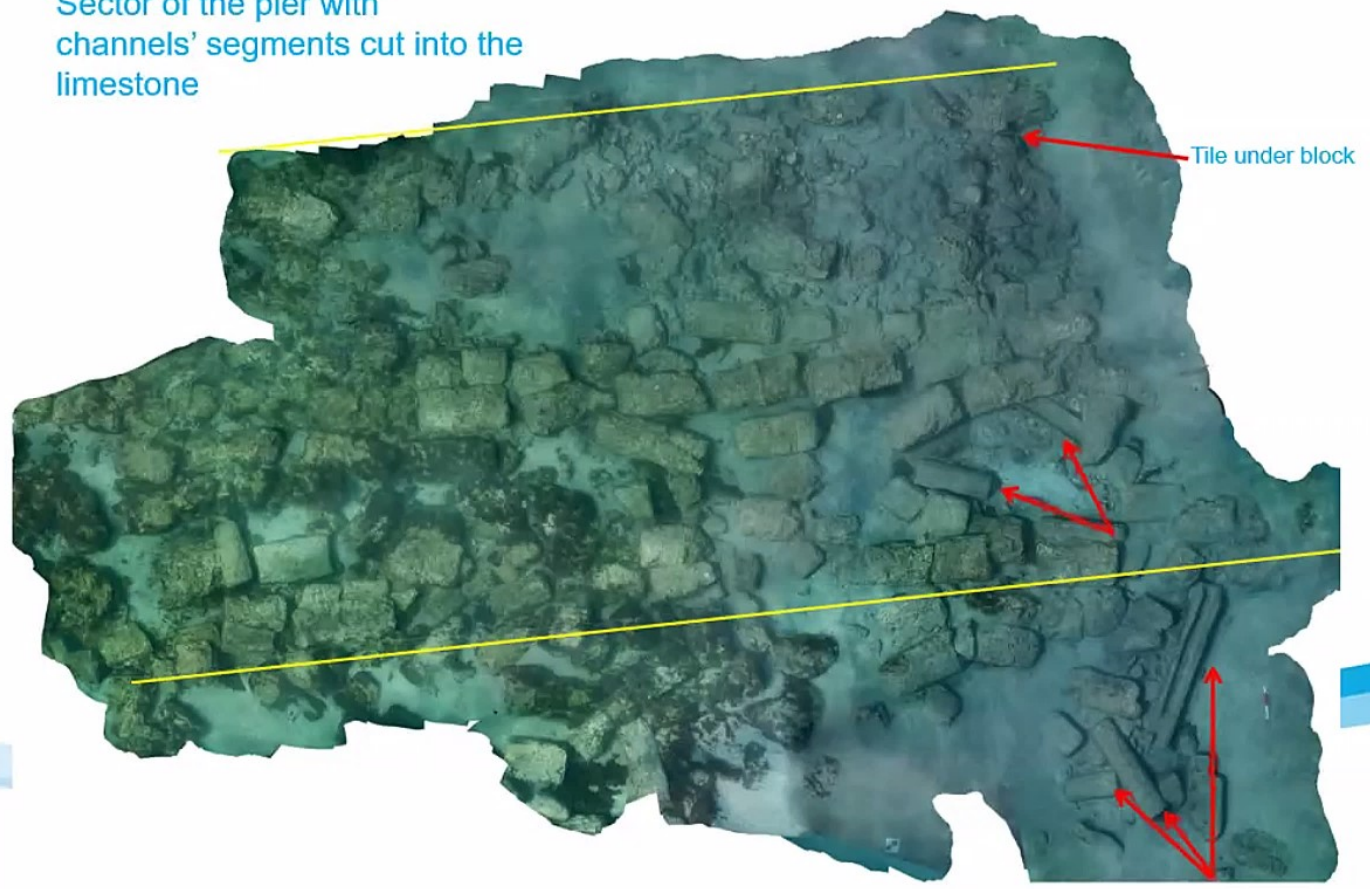
Rita Auriemma



S. Giovanni
Sector A.
The big pier



Sector of the pier with channels' segments cut into the limestone



Tile under block



Rita Auriemma



Presumed channel stretches cut into the limestone in the internal part of the foundations



Recess in the internal part of the side wall, level with the channels





S. Giovanni.
Sector A. The big pier



Presumed
channel stretches
and carved blocks
in the external
part, level with the
internal ones

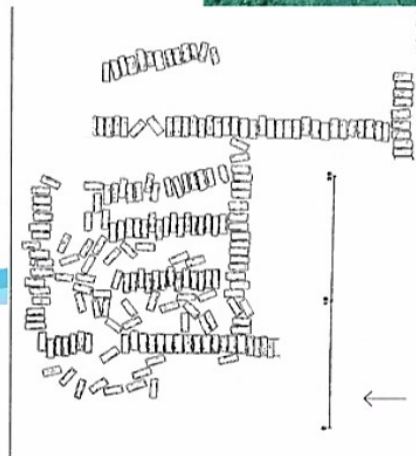
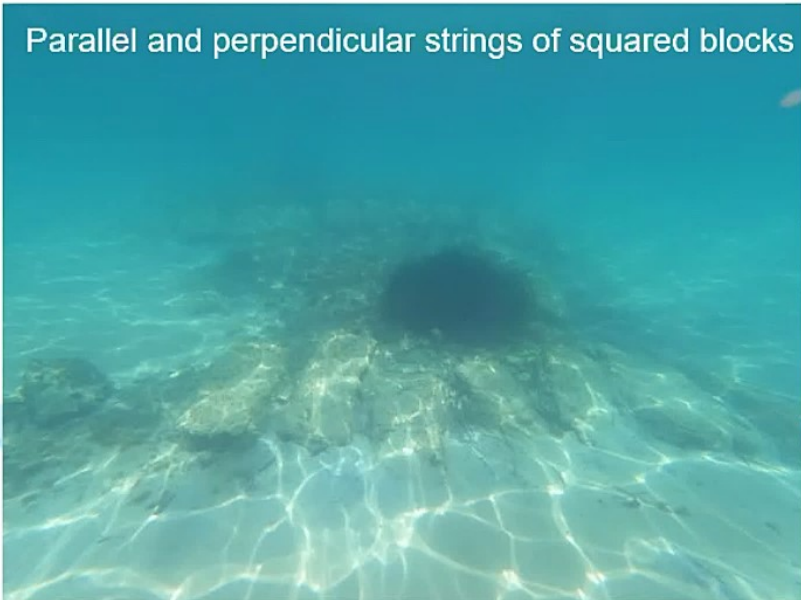


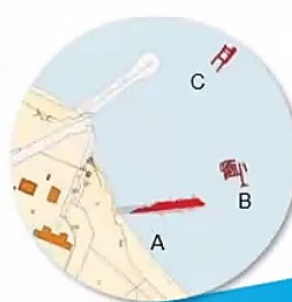
Rita Auriemma



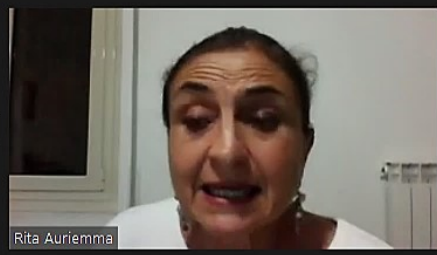
Parallel and perpendicular strings of squared blocks

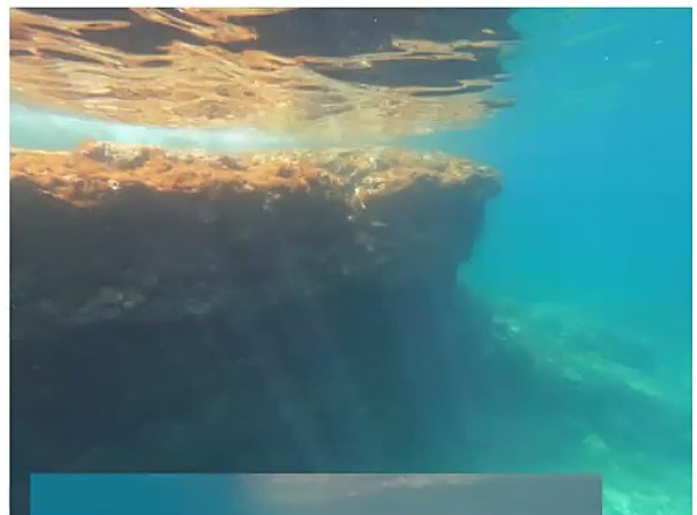
S. Giovanni.
Sector B.





S.Giovanni. Sector C: "Chiesa sommersa/Submerged Church"





Italy - Croatia UnderwaterMuse EUROPEAN UNION European Regional Development Fund

S.Giovanni. Sector C: "Chiesa sommersa": Opus cementicium above the rocky spur



Rita Auriemma

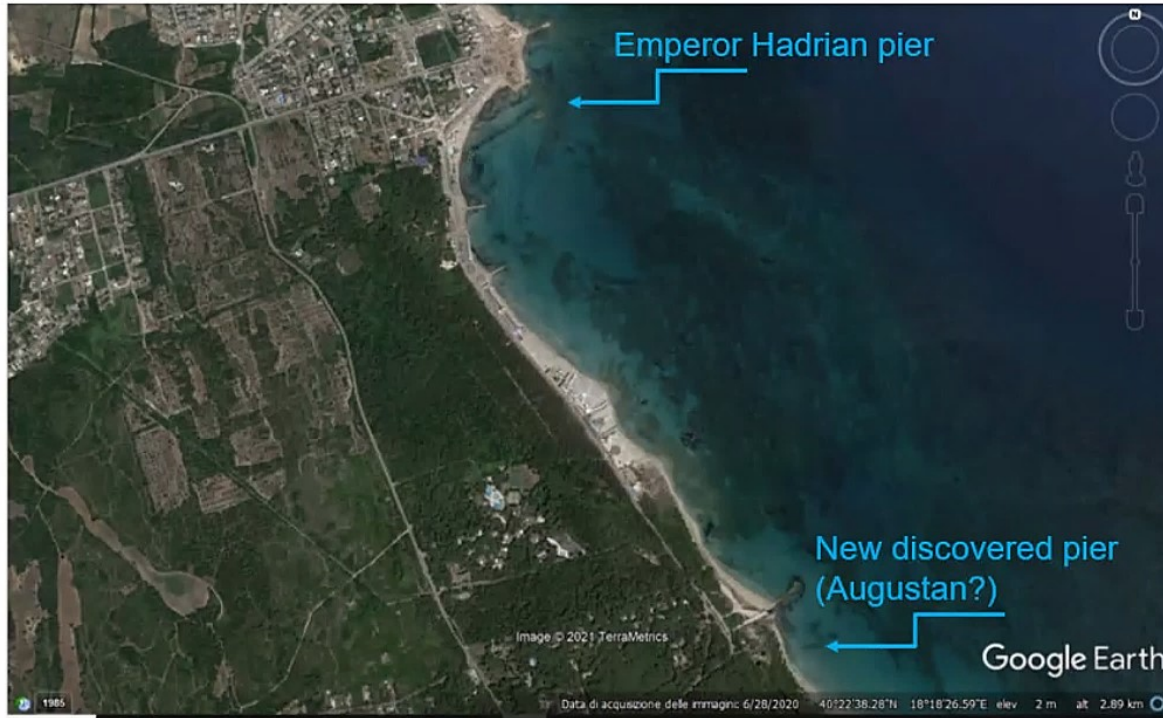


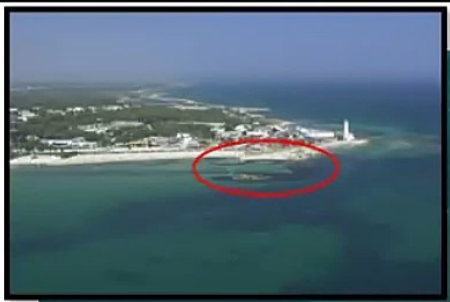
Entre Mares



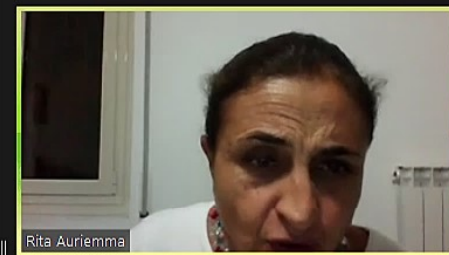
S.Giovanni. Ancient road from Lecce/Lupiae







S. Cataldo (Lecce). Emperor Hadrian pier



Rita Auriemma



Entre Mares



Side of squared blocks of the submerged foundations

S. Cataldo (Lecce). Emperor Hadrian pier



Rita Auriemma



Entre Mares

