

Canale Siancella

MINISTERO DELLA CULTURA
MIC

Soprintendenza Archeologia, belle arti e paesaggio per il Comune di Venezia e Laguna

The urban harbour of *Altinum* on the lagoon of Venice
Carlo Beltrame
Università Ca' Foscari Venezia

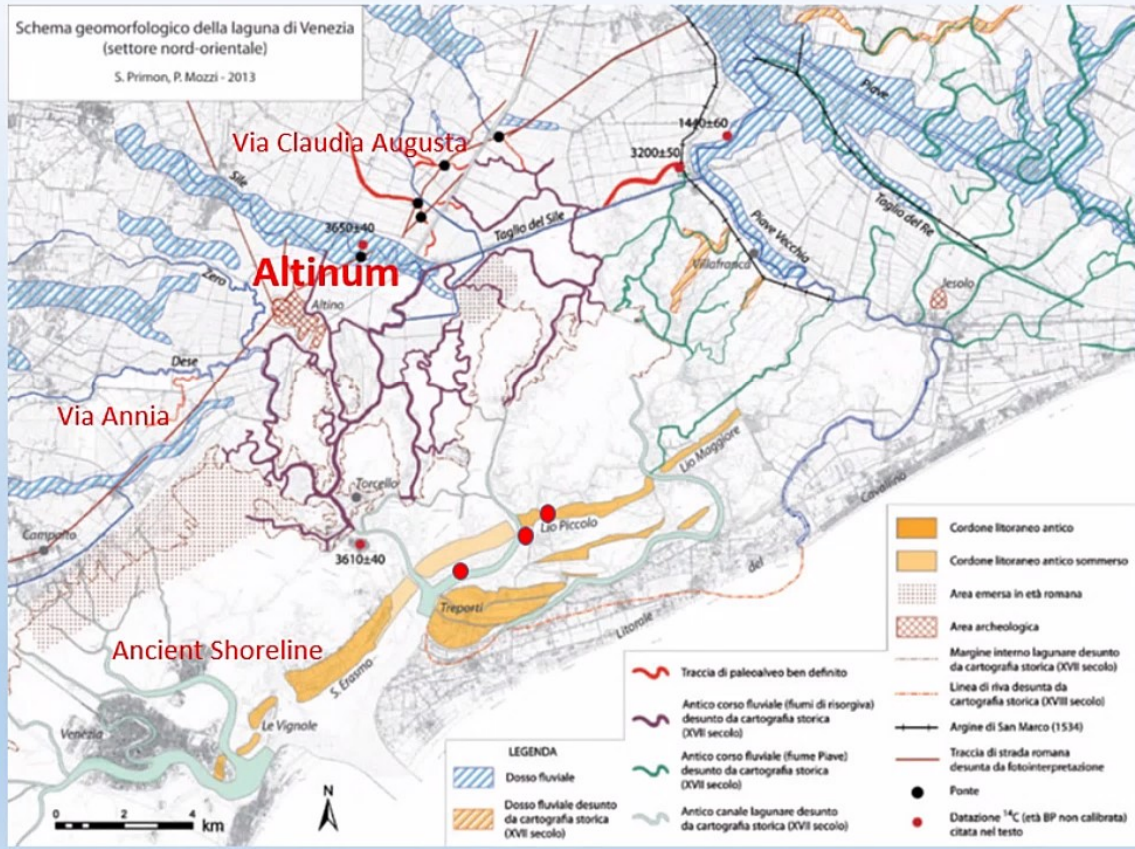
Paolo Mozzi
Università degli studi di Padova

Università Ca' Foscari Venezia
Dipartimento di Studi Umanistici

UNIVERSITÀ DEGLI STUDI DI PADOVA
DIPARTIMENTO DI GEOSCIENZE

Entre Mares

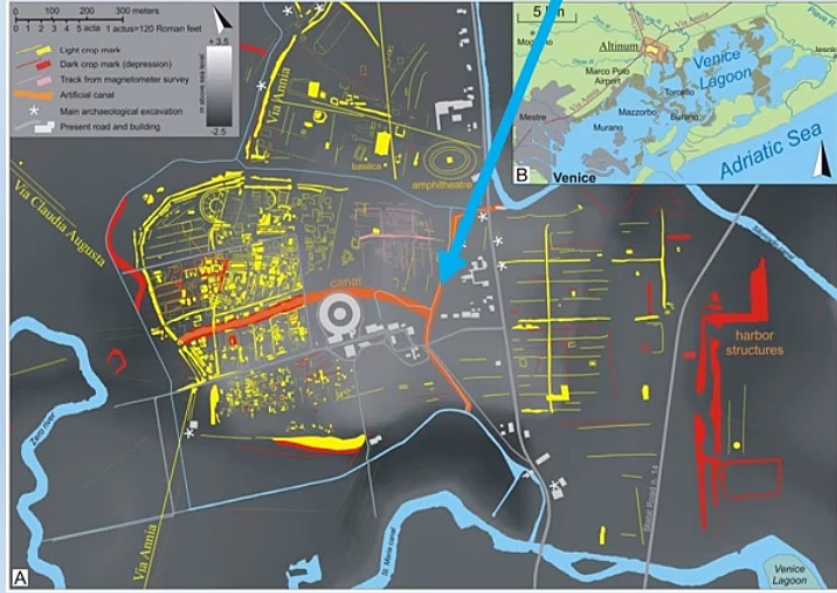
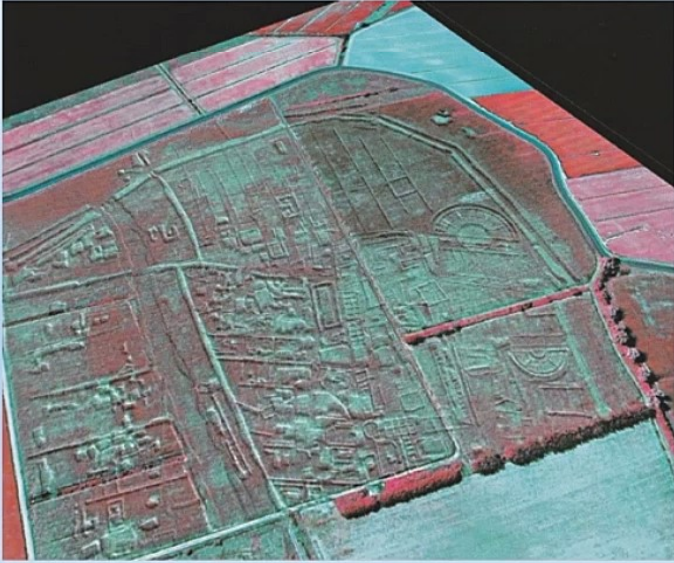
Carlo Beltrame



'Harbour area' of Altinum

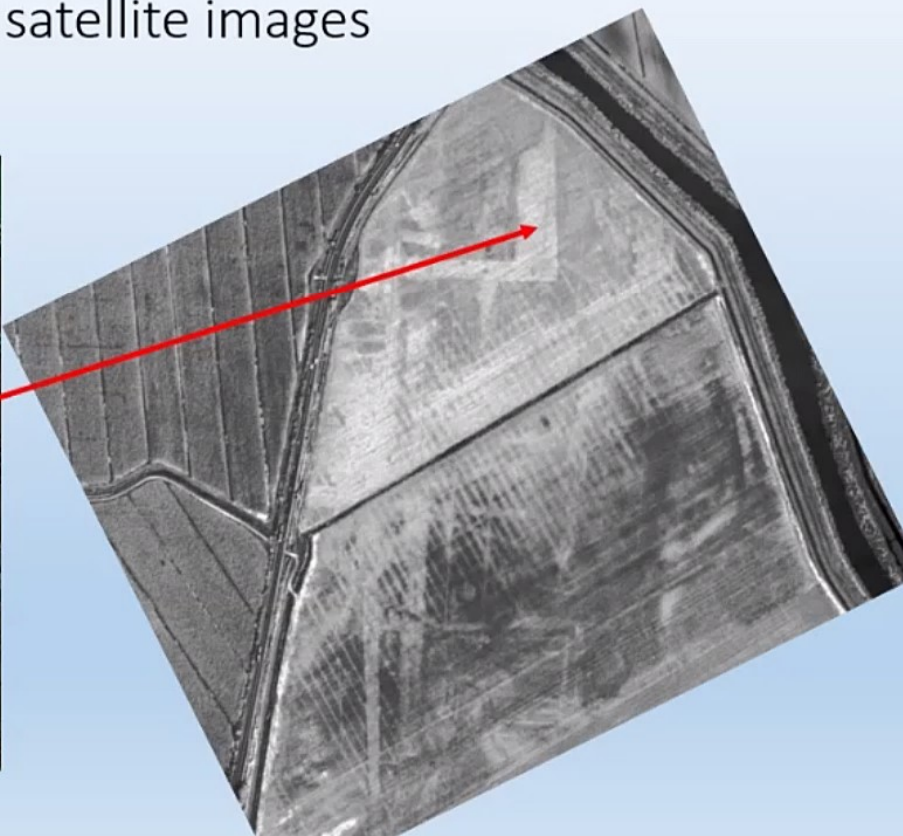


Altinum from the space: rivers and channels



Carlo Beltrame

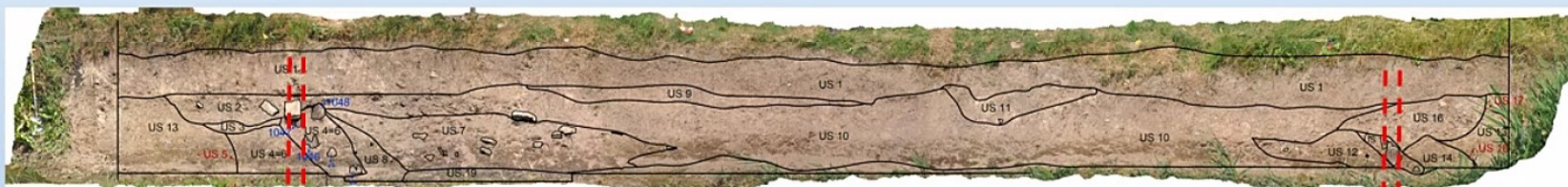
The crop marks from aerial and satellite images



Piles along the entrance of the harbour



Exposed section of the external side of the ditch.
The profile of the harbour entrance is visible



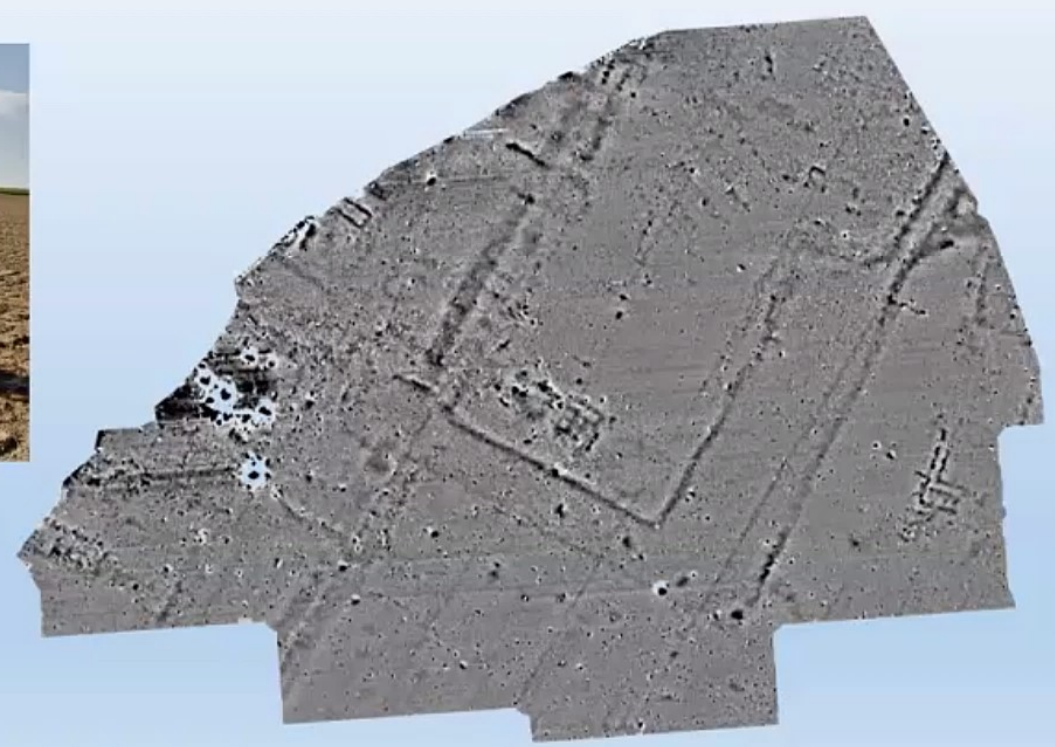
Quote Teste Pali
1046: -2.042 m
1047: -1.980 m
1048: -1.715 m

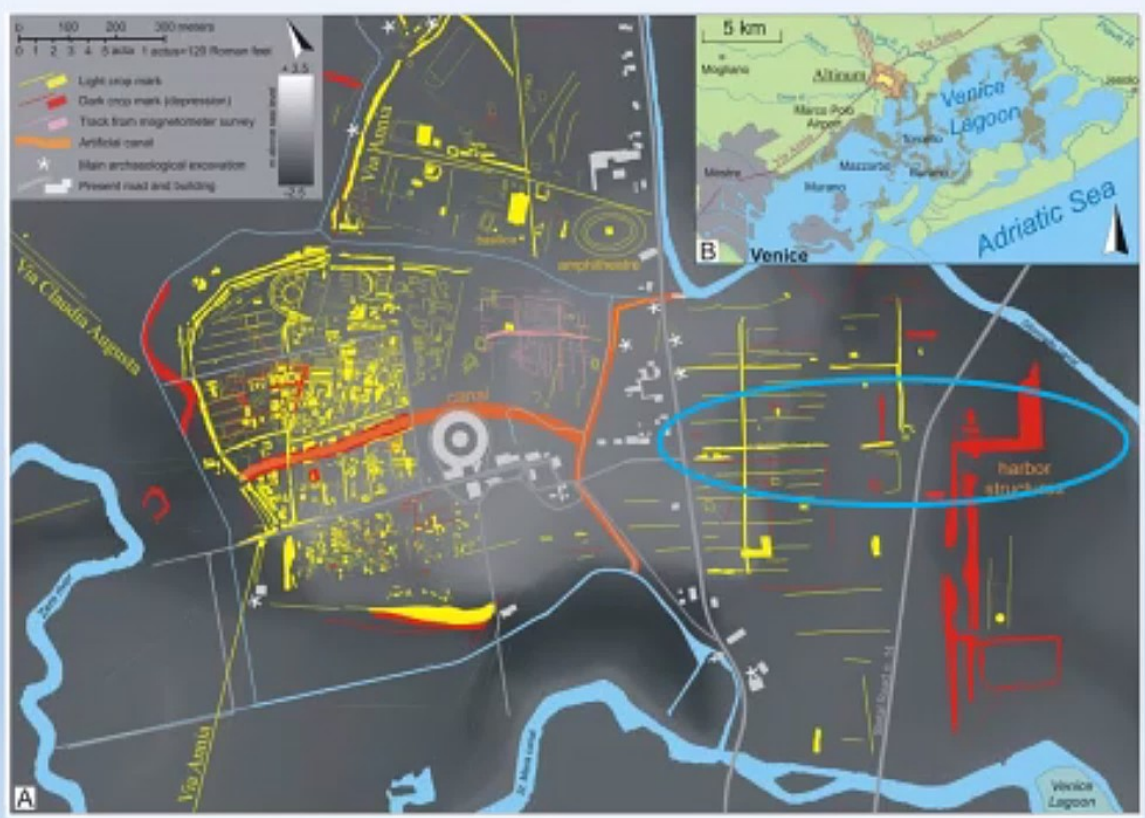


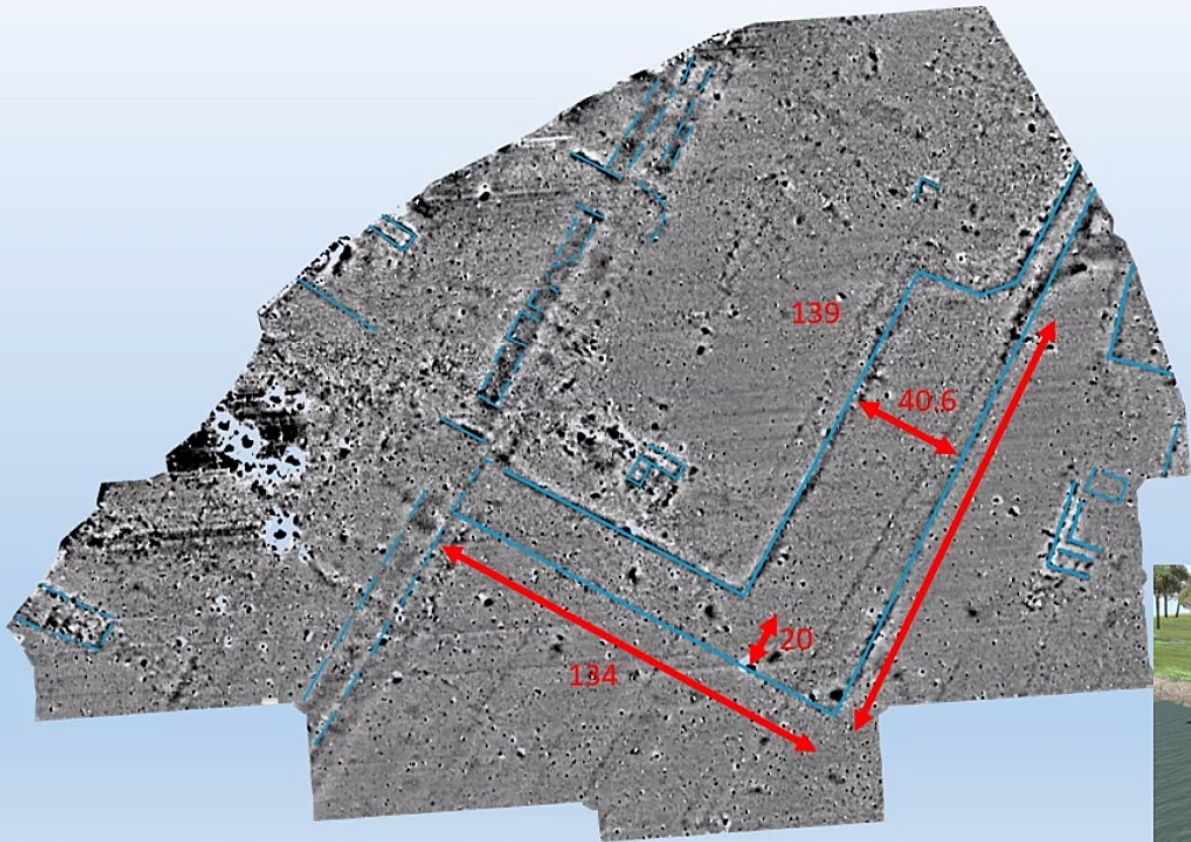
Piles north of the Sioncello river

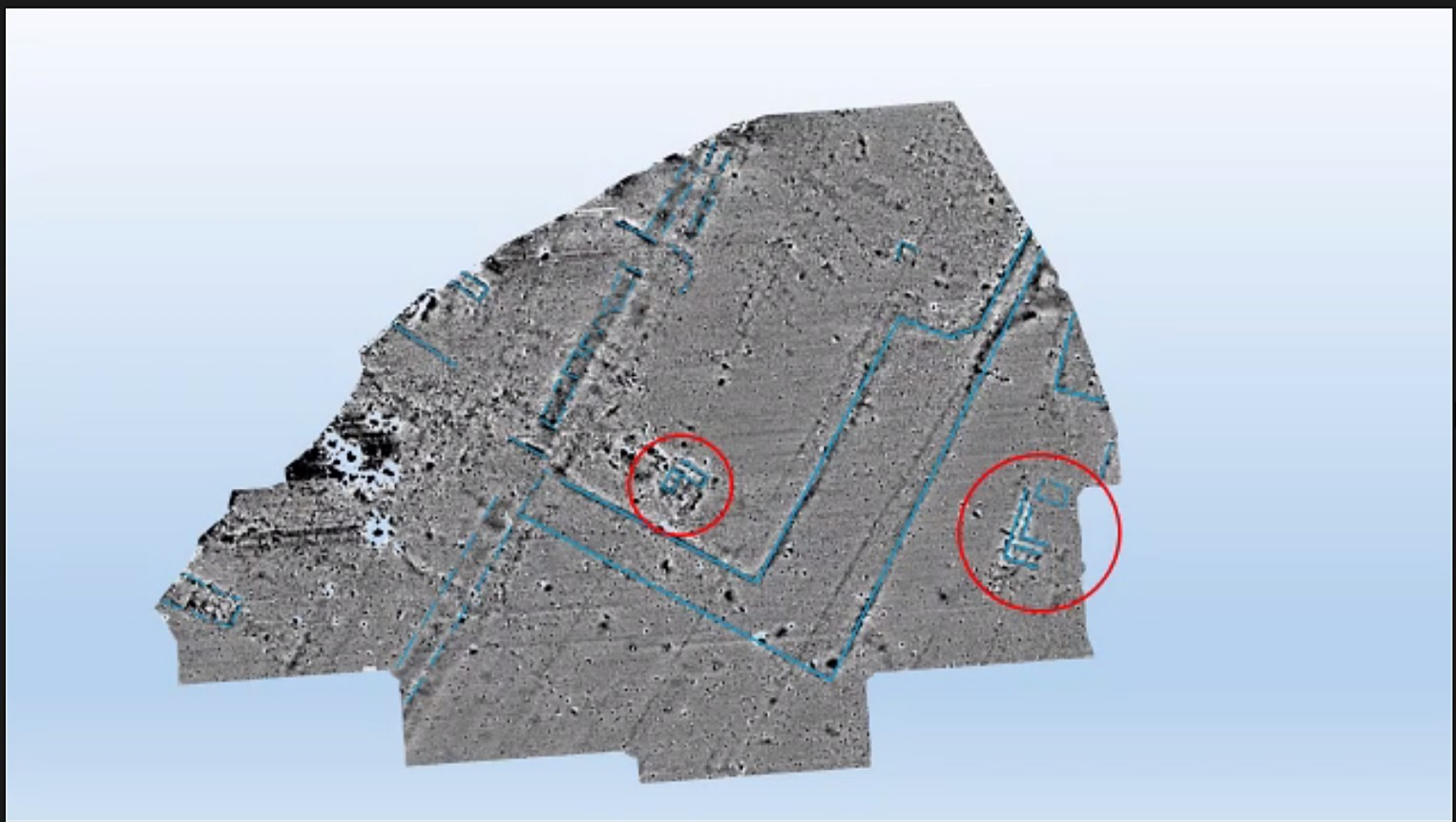


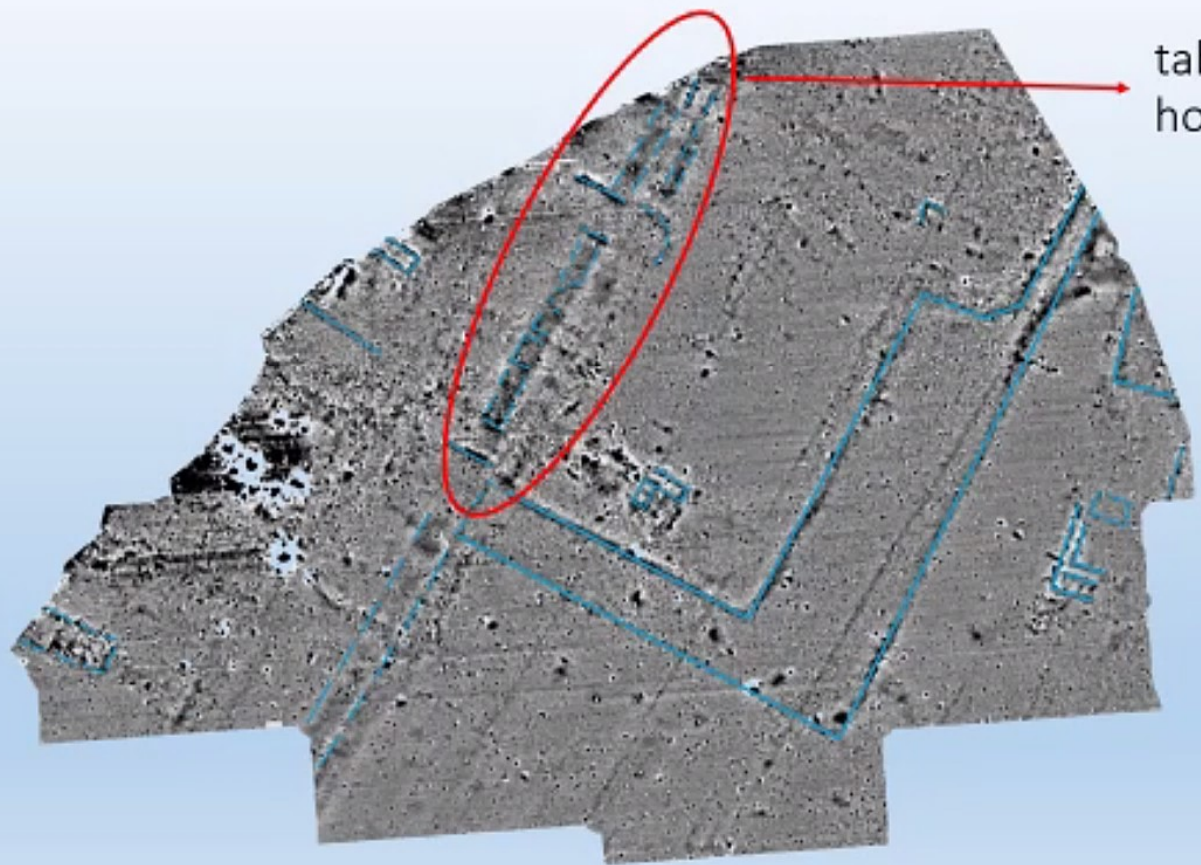
Geomagnetic investigation











tabernae,
horrea ?



Carlo Beltrame

Rendering of the harbour (E. Costa)

