



Charikleia Papageorgiadou  
Institute of Historical Research



## Ports on Roman coins: Reality or mannerism?

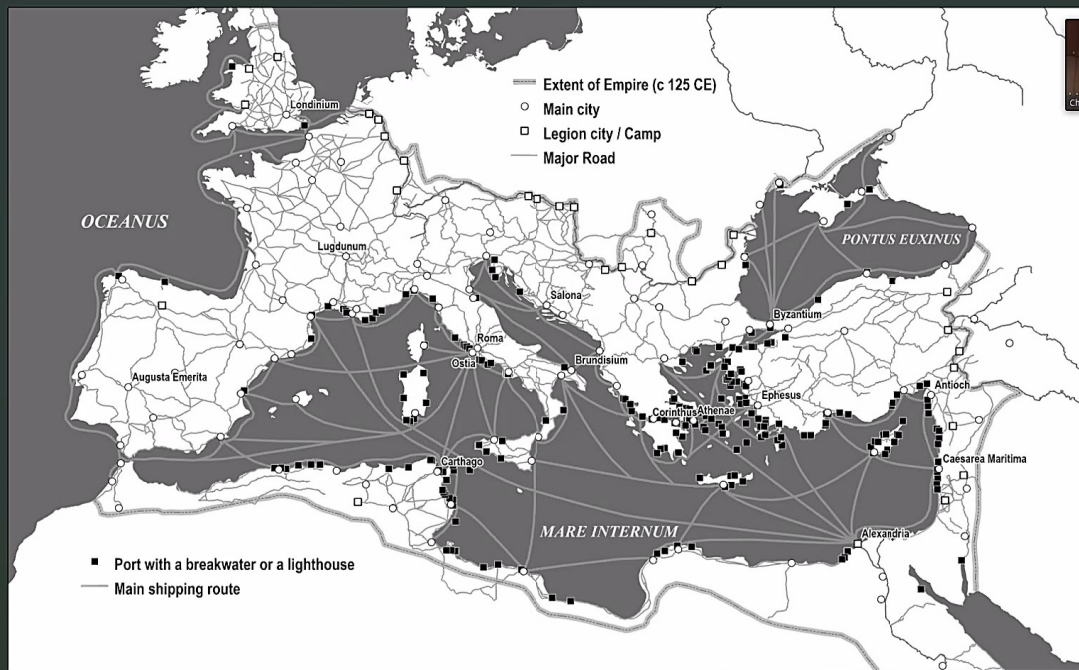
### *Carthago delenda est*

Cicero [*On the Agrarian Law* 2.32.87]

“ Carthage has been destroyed, because, both from its vast population, and from the natural advantages of its situation, **being surrounded with harbours**, and fortified with walls, it appeared to project out of Africa, and to threaten the most productive islands of the Roman people.

Of Corinth<sub>1</sub>, there is scarcely a vestige left. For it was situated on the straits and in the very jaws of Greece, in such a way that by land it held the keys of many countries, and that it almost **connected two seas**, equally desirable for purposes of navigation, which were separated by the smallest possible distance.

**These towns, though they were out of the sight of the empire, our ancestors not only crushed, but, as I have said before, utterly destroyed, that they might never be able to recover and rise again and flourish.”**



<https://porteconomicsmanagement.org/pemp/contents/part2/changing-geography-of-seaports/main-ports-roman-empire-c125-ce/>



**ANT. PIUS**  
138-161

**COMMODUS**  
176/180-192

**CARACALLA**  
198-217

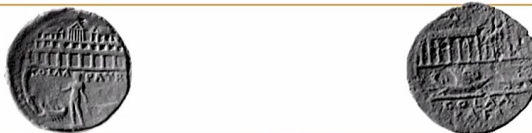
**GETA**  
209-211

**MAXIMILIANUS**  
235-238

CORINTH



PATRAI



METHONE



SIDE



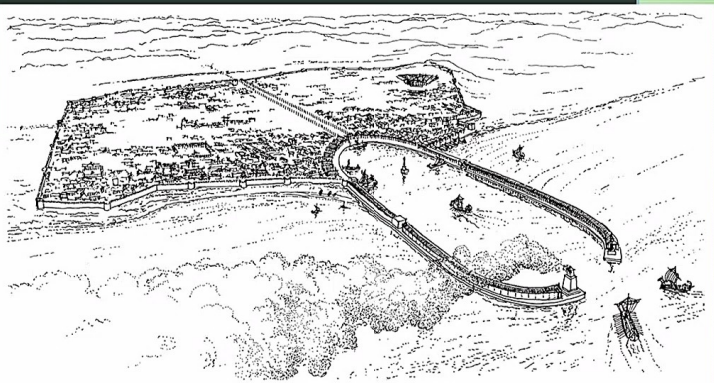
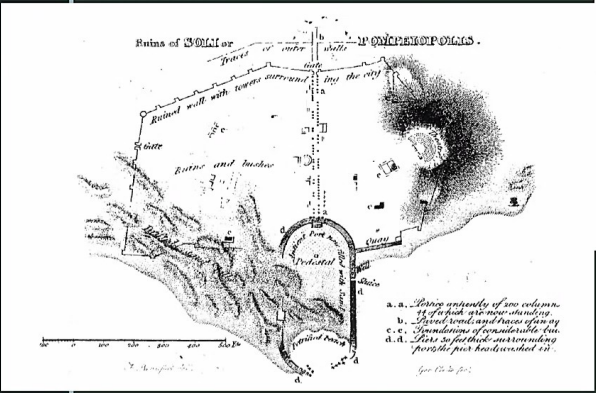
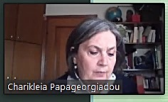
POMPEIOPOLIS



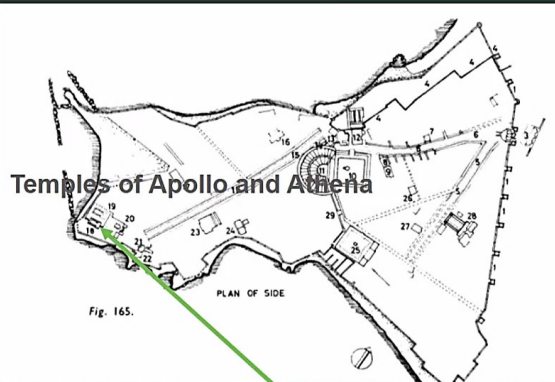




# Soli-Pompeiopolis



<https://www.romanports.org/fr/articles/ports-en-bref/392-pompeiopolis-port-romain-dans-turkey-anglais.html>

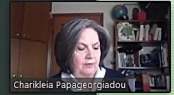
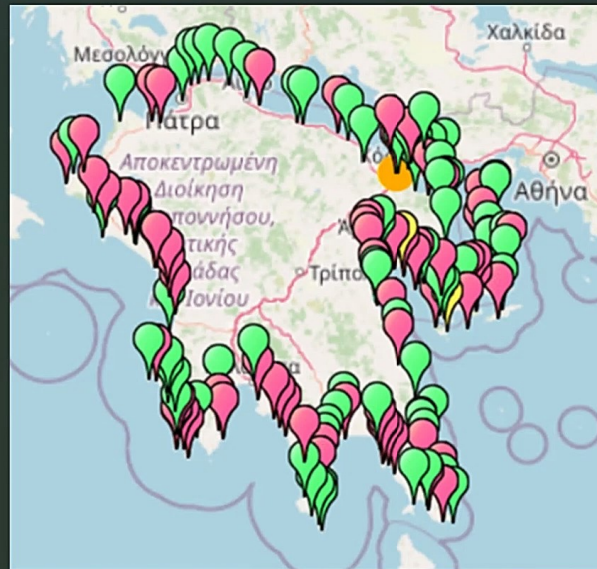
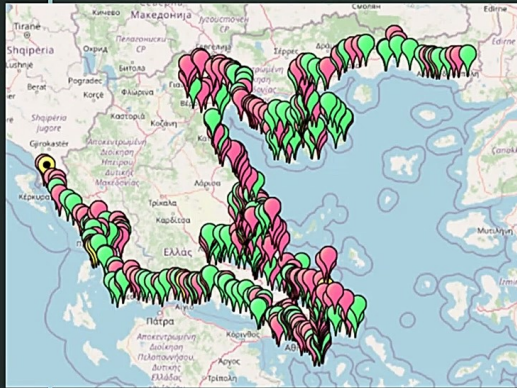


## Temples of Apollo and Athena

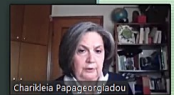
# Side



Strabo, Geography 14.3.2.  
In Side, dockyards stood open

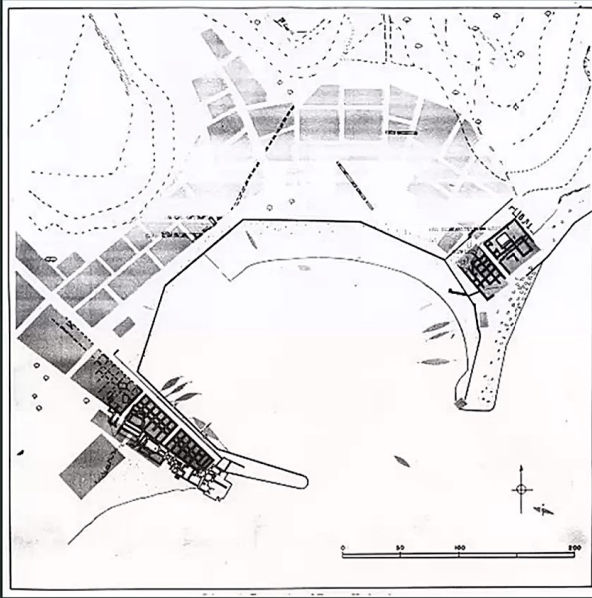


<https://www.ancientportsantiques.com/the-catalogue/greece-continental/>



- **Corinth**, there is scarcely a vestige left. For it was situated on the straits and in the very jaws of Greece, in such a way that by land it held the keys of many countries, and that **it almost connected two seas, equally desirable for purposes of navigation, which were separated by the smallest possible distance**

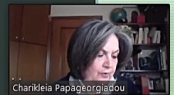




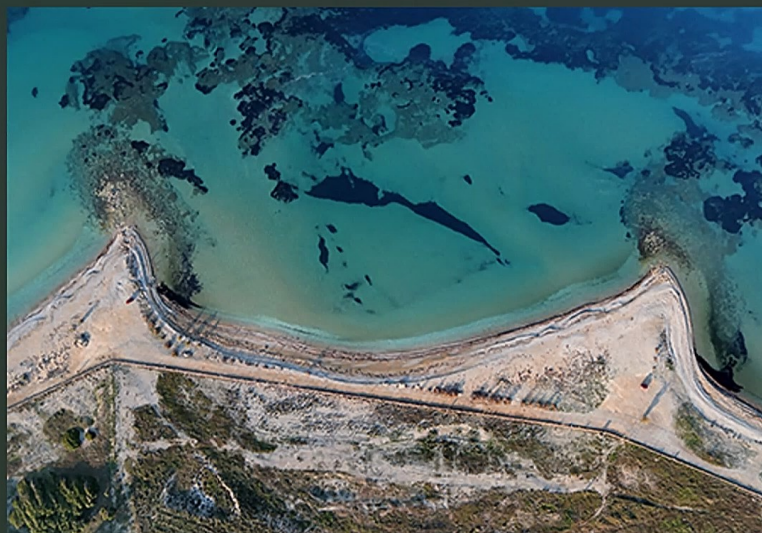
<https://www2.rgzm.de/Navis2/Home/HarbourFullTextOutput.cfm?HarbourNR=Kenchreai>  
<https://www.greecetravel.com/peloponnesos/corinth/canal.html>



## Lechaion

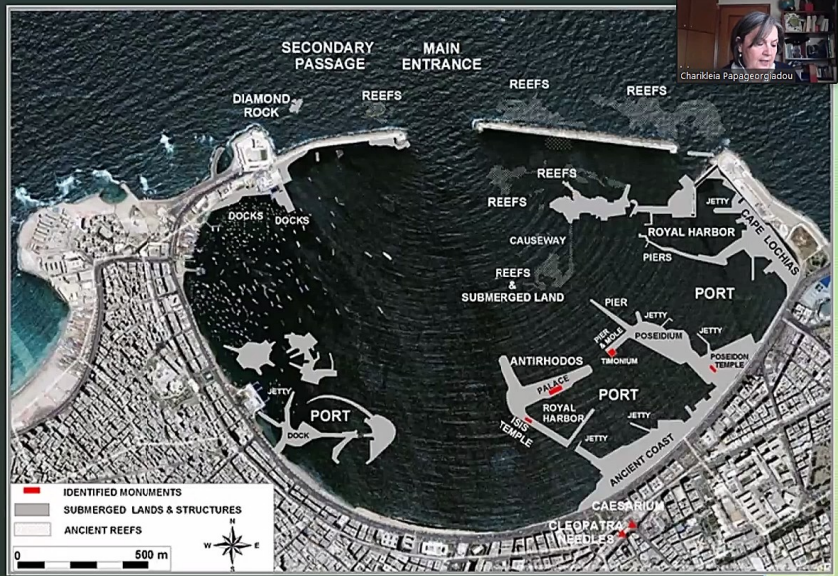
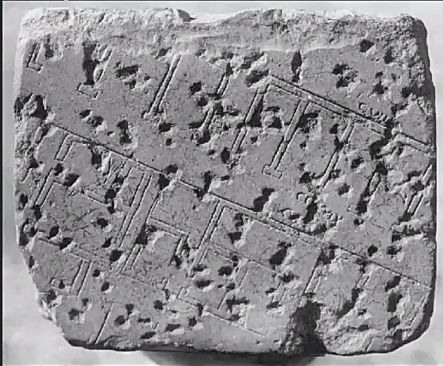


Lechaion Harbour Project  
Danish Institute at Athens  
University of Copenhagen  
Ephorate of Underwater  
Antiquities  
Dr. Bjørn Lovén and Dr.  
Dimitris Kourkoumelis



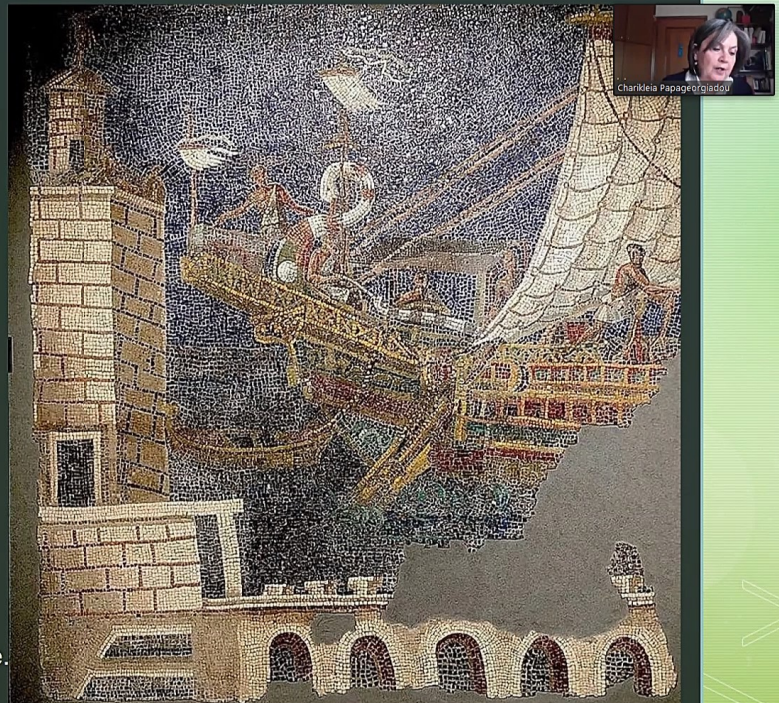


A fragment of a marble plan of Portus (18 x 16.5 cm.).



The eastern port of Alexandria during the Ptolemaic and Roman periods. Source © IEASM (Institut Européen d'Archéologie Sous-Marine).

2nd century AD  
House of the Claudii Claudiani, Rome.



# Terme di Traiano

